

The Healthy Landscape Approach to Landscape Management Planning

Wildland Fire Canada 2010

October 6, 2010

Kitchener-Waterloo, Ontario

Dr. David Andison



Who Is FRI?

- Foothills Research Institute (formerly Foothills Model Forest)
 - Non-profit corporation founded in 1992.
 - Partner driven knowledge & tool development
 - 12 “Program” areas.
 - Founding member of the Canadian Model Forest Network.
 - Original land base ~ 3 million ha in the Hinton-Jasper area, but now much of western boreal Canada.
- *Always interested in new partnerships!*



The FRI Natural Disturbance Program

**Understand patterns and process of natural
disturbance,
and help partners integrate them into forest land
management & planning.**

Original Interpretation of an NRV Strategy:



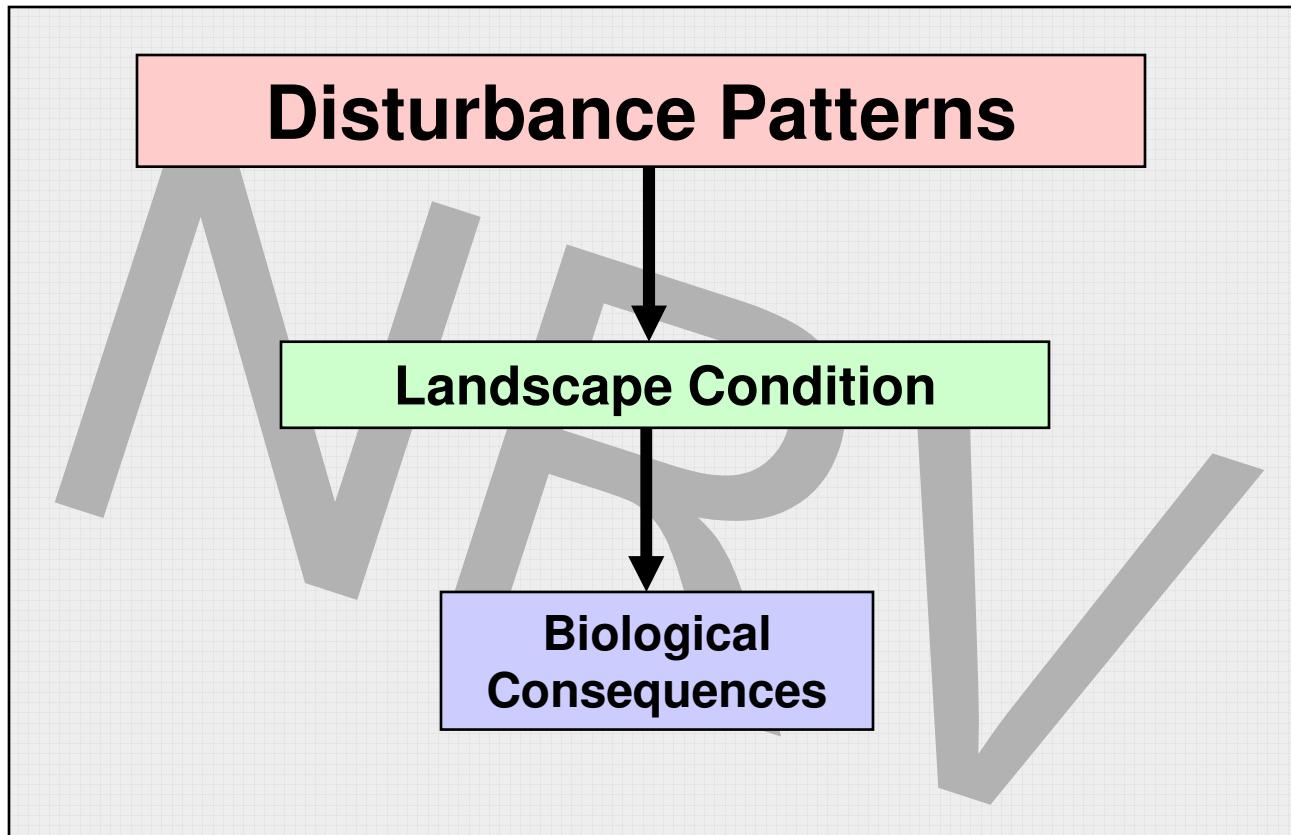
**Coarse
decision-making filters
for forest management.**



Another Interpretation:

**Use natural patterns as the foundation for
a process of developing and evaluating
regional land use plans and policies.**

The Three Box NRV Model



Economic and Social Need A

Disturbance Patterns

Landscape Condition

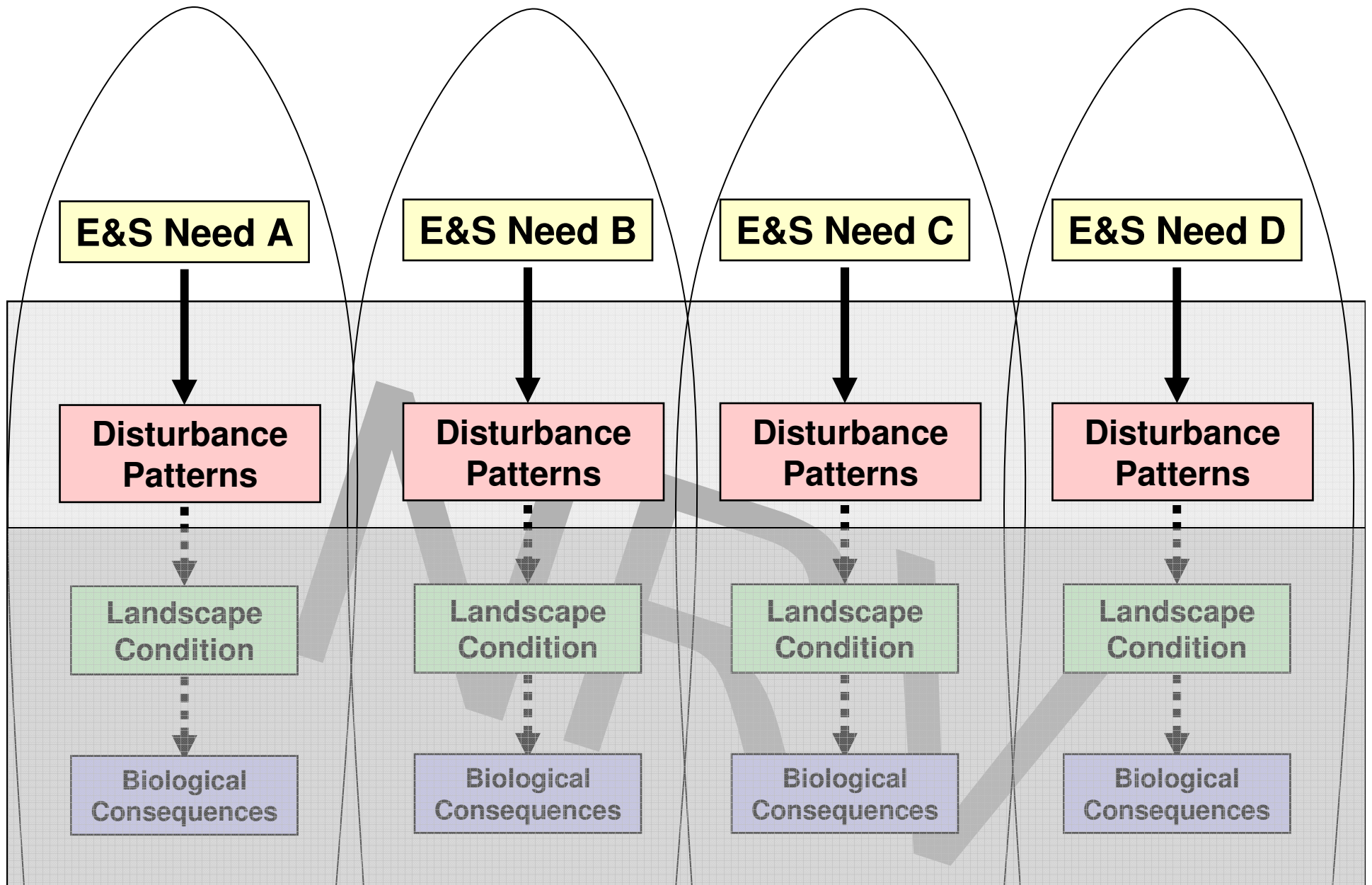
**Biological
Consequences**

**Management controls;
“Levers”**

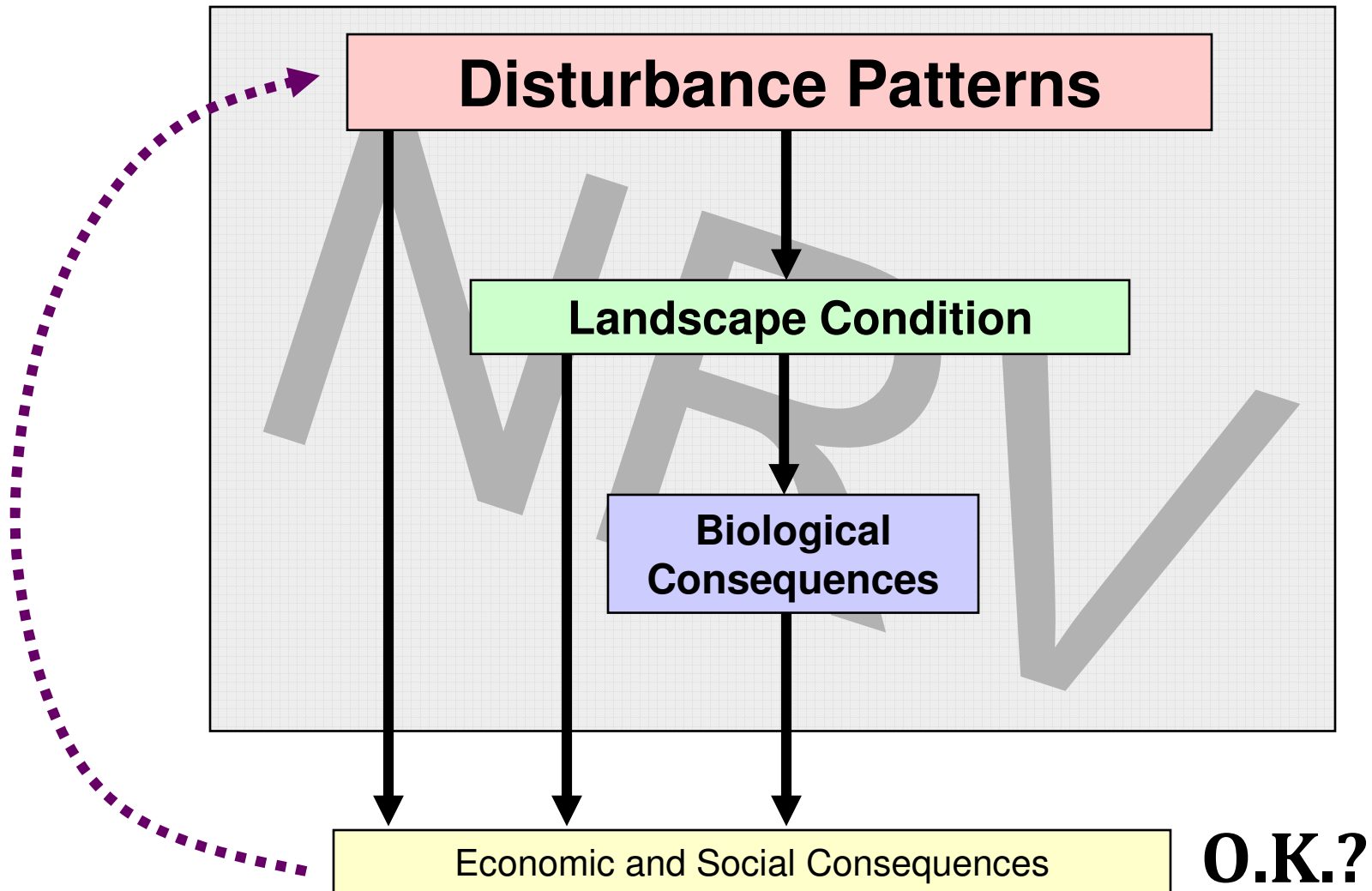
**Primary management
effects;
“Desired Future Forest”**

**Management outputs;
“Fine Filter Values”**

The Traditional Model



The Healthy Landscape Model



The Healthy Landscape Hypothesis:

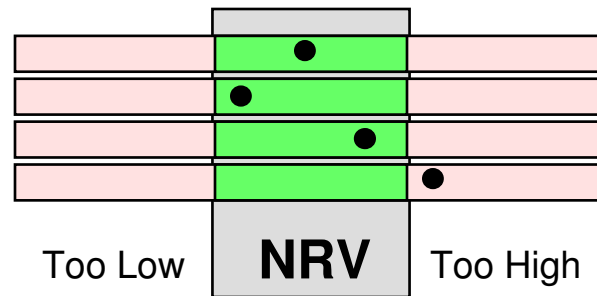
1. Landscape health is the ultimate measure of FULL sustainability.
2. Landscape health is directly related to biodiversity & ecosystem function.
3. Natural patterns are a proxy for biodiversity & ecosystem function.
4. Natural patterns can be used as a universal foundation for all landscape management.
5. We can differentiate a “healthy” from an “unhealthy” landscape via simple indicators.

Landscape 1 is “Healthier” than Landscape 2

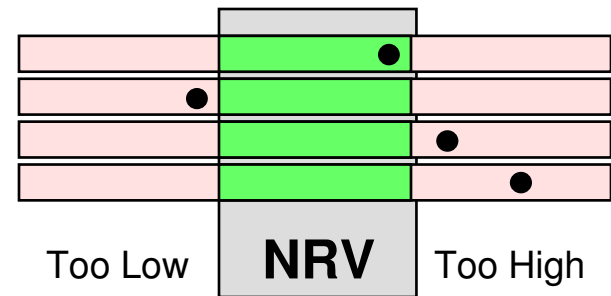
Indicator

Frequency
Size
Shape
Severity

Landscape 1



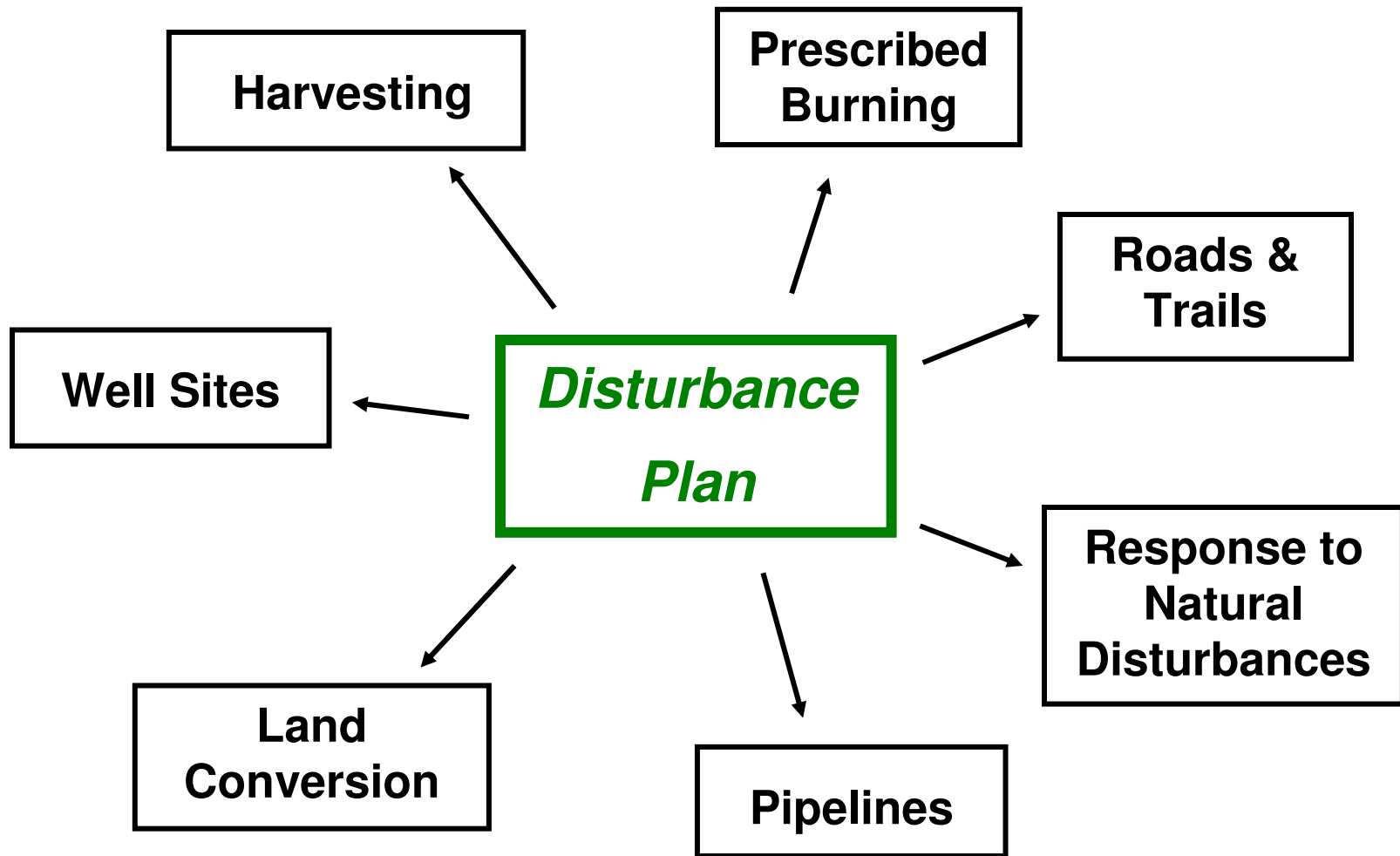
Landscape 2



Green = Measurable Historical Range

Red = Beyond Historical Range

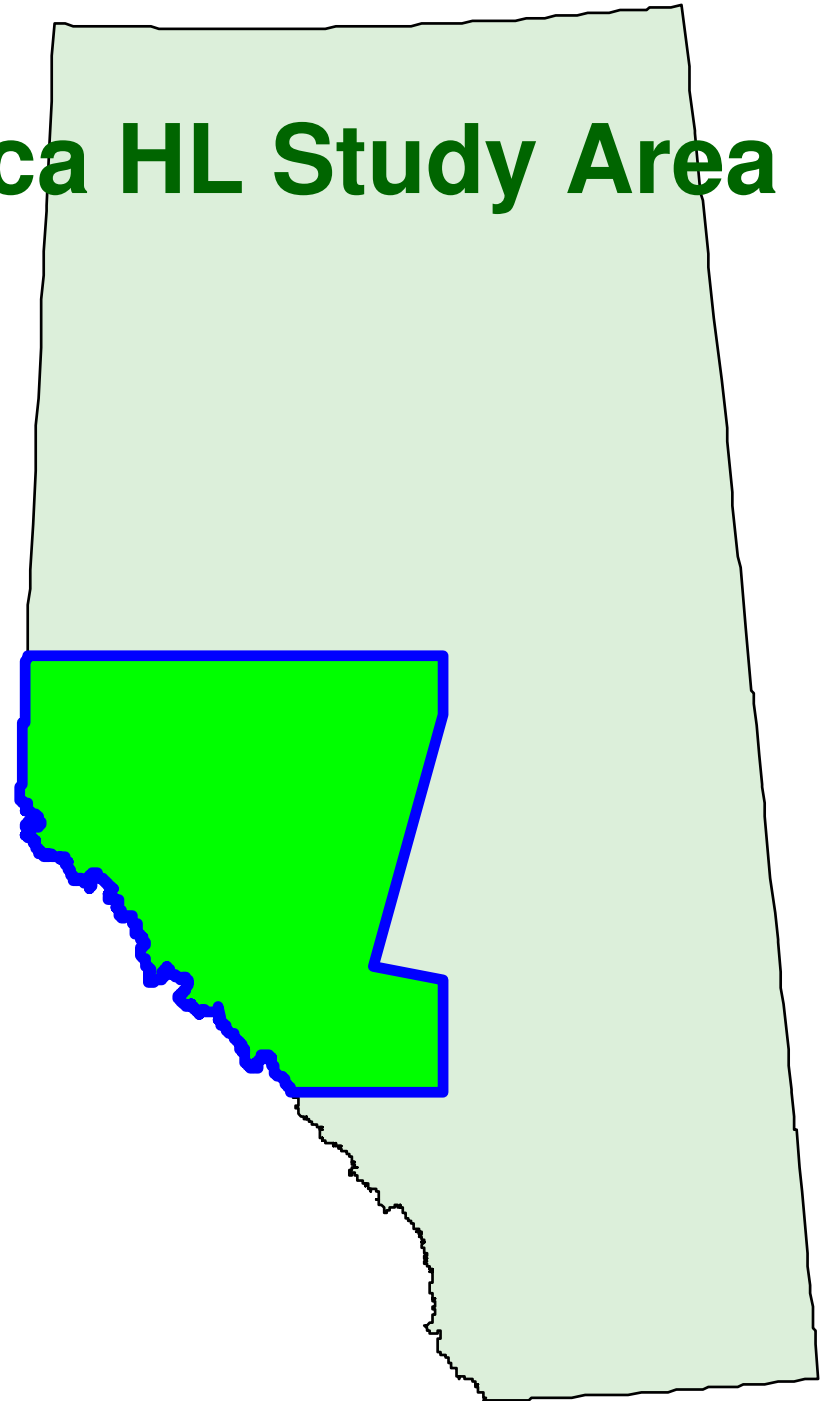
Black Dots = Current (point)

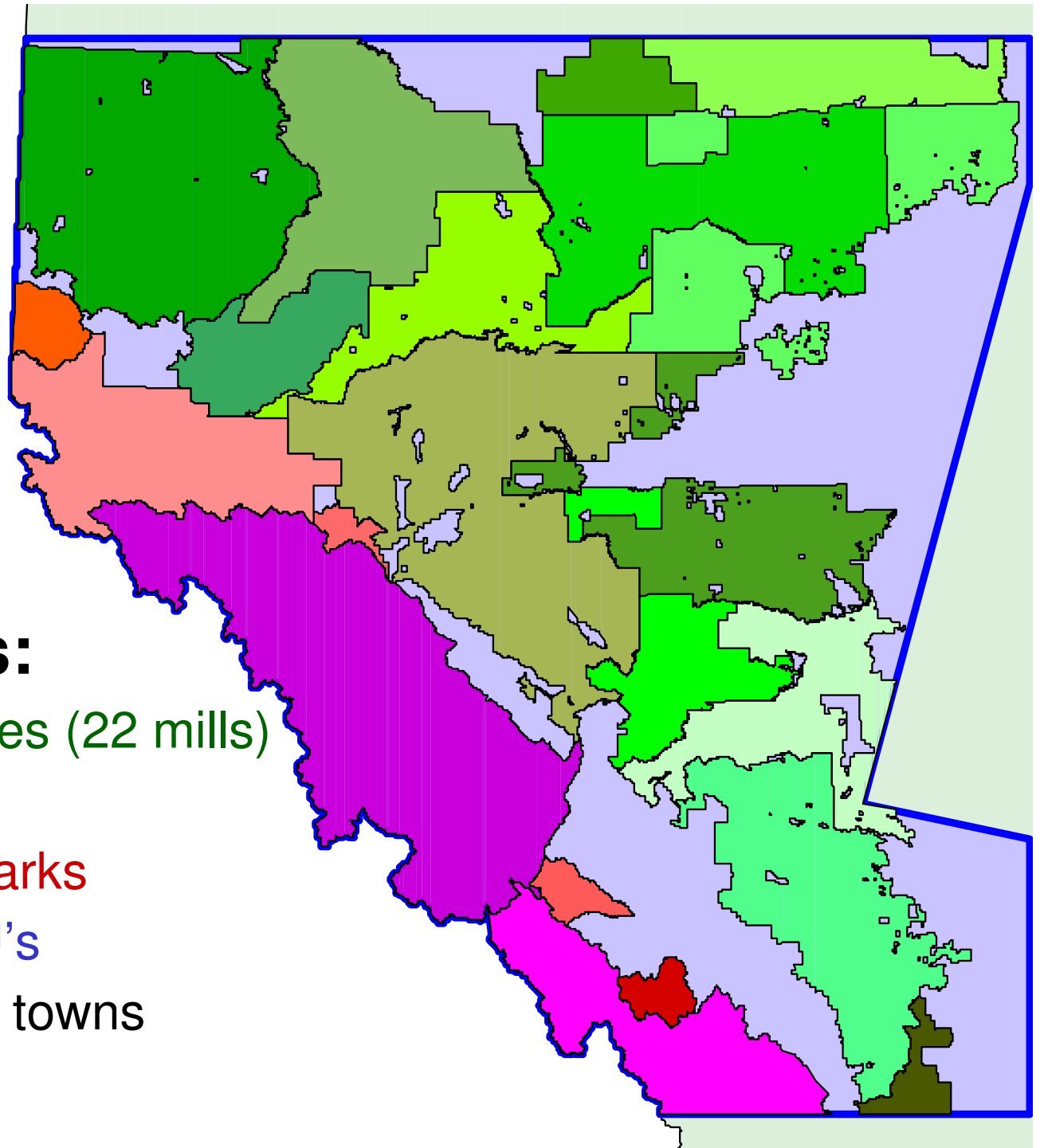


The Upper Athabasca HL Study Area

11 Million ha

- MPB
- Wildfire
- Water
- Recreation
- Natural Gas
- Timber
- Grizzly Bear
- Woodland Caribou

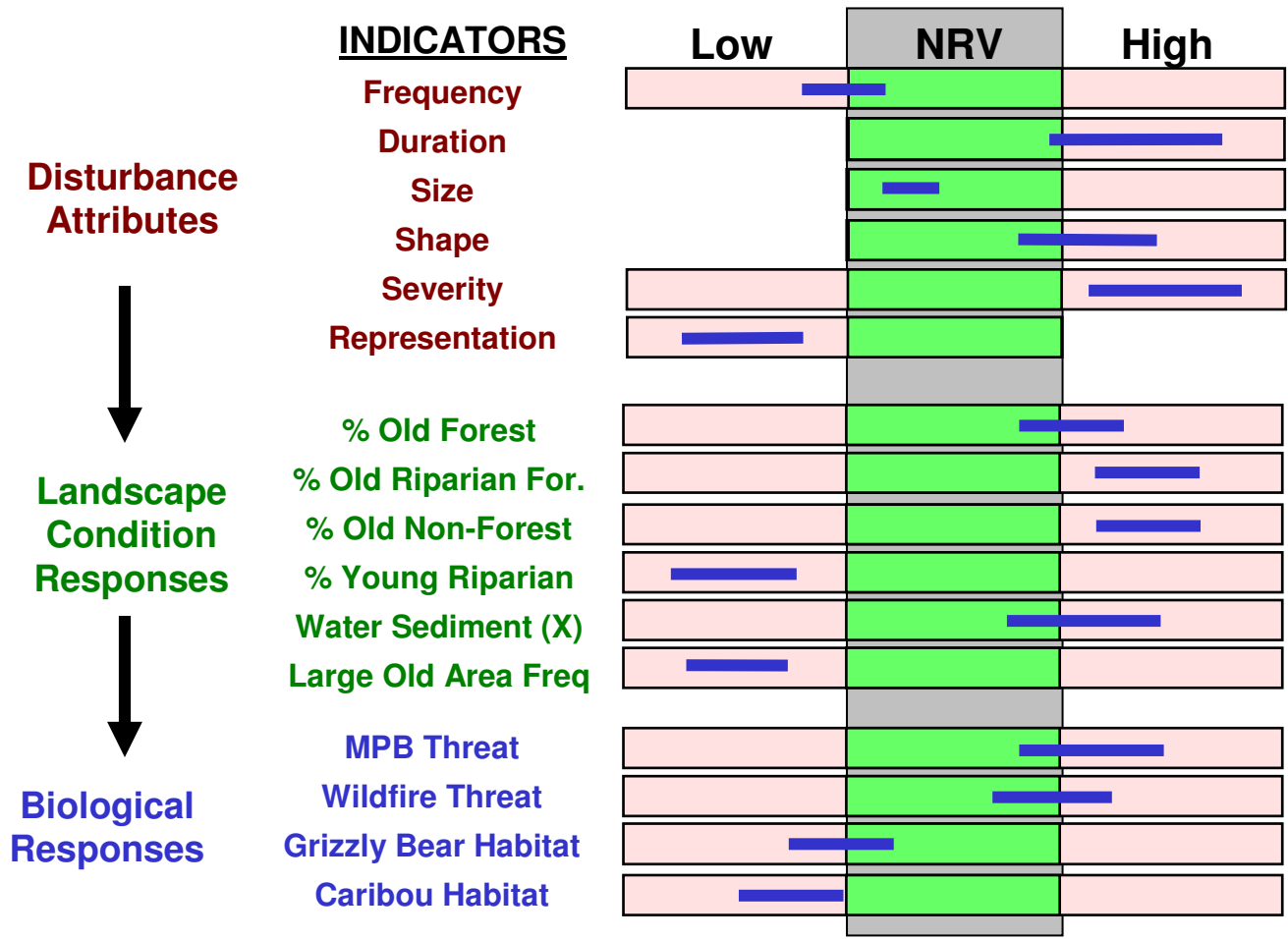




Jurisdictions:

- 14 For. Mgmt. tenures (22 mills)
- 2 national parks
- 5 large provincial parks
- >10 provincial FMU's
- >20 municipalities / towns

Current Condition of the UA Landscape

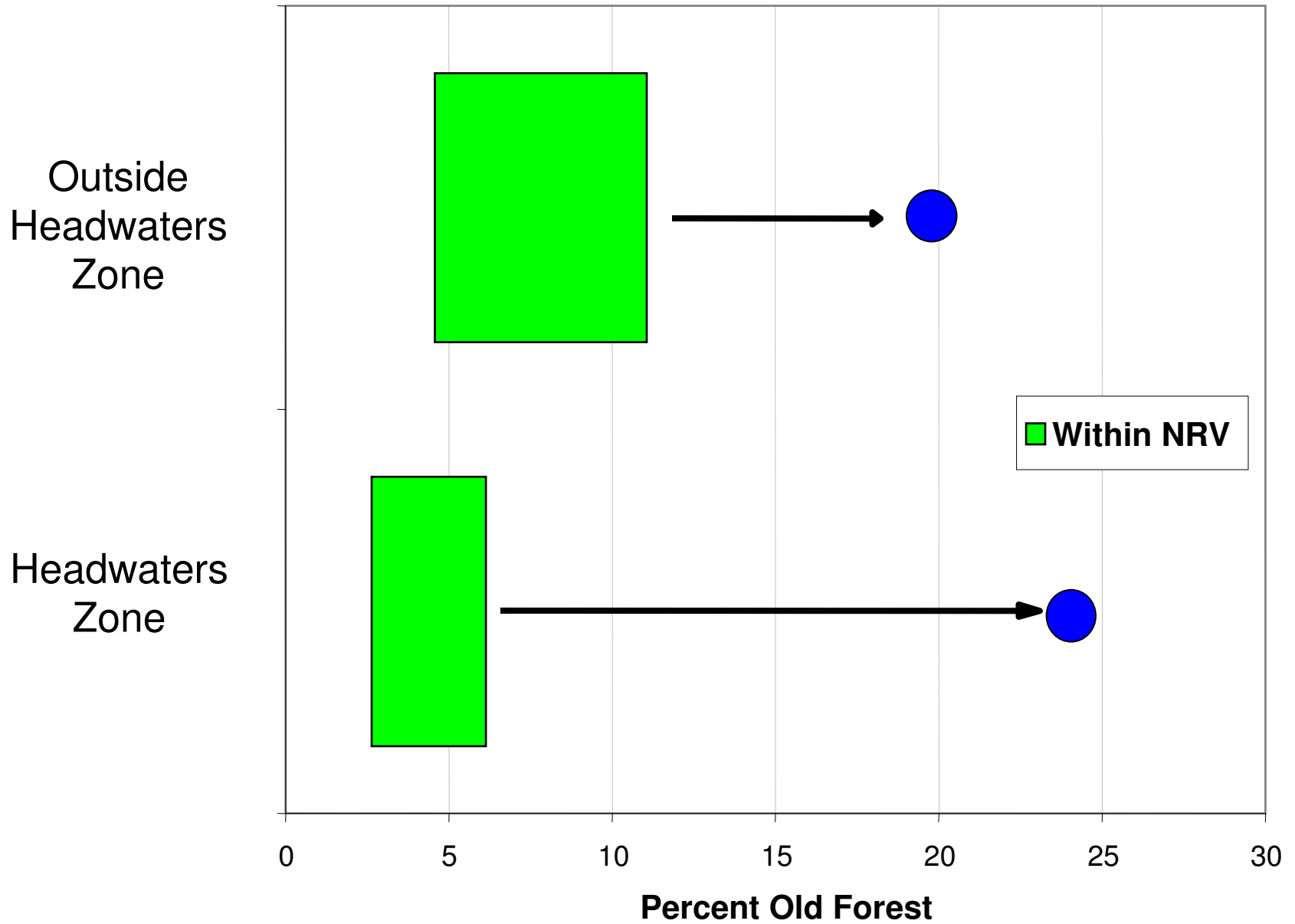


Green = NRV

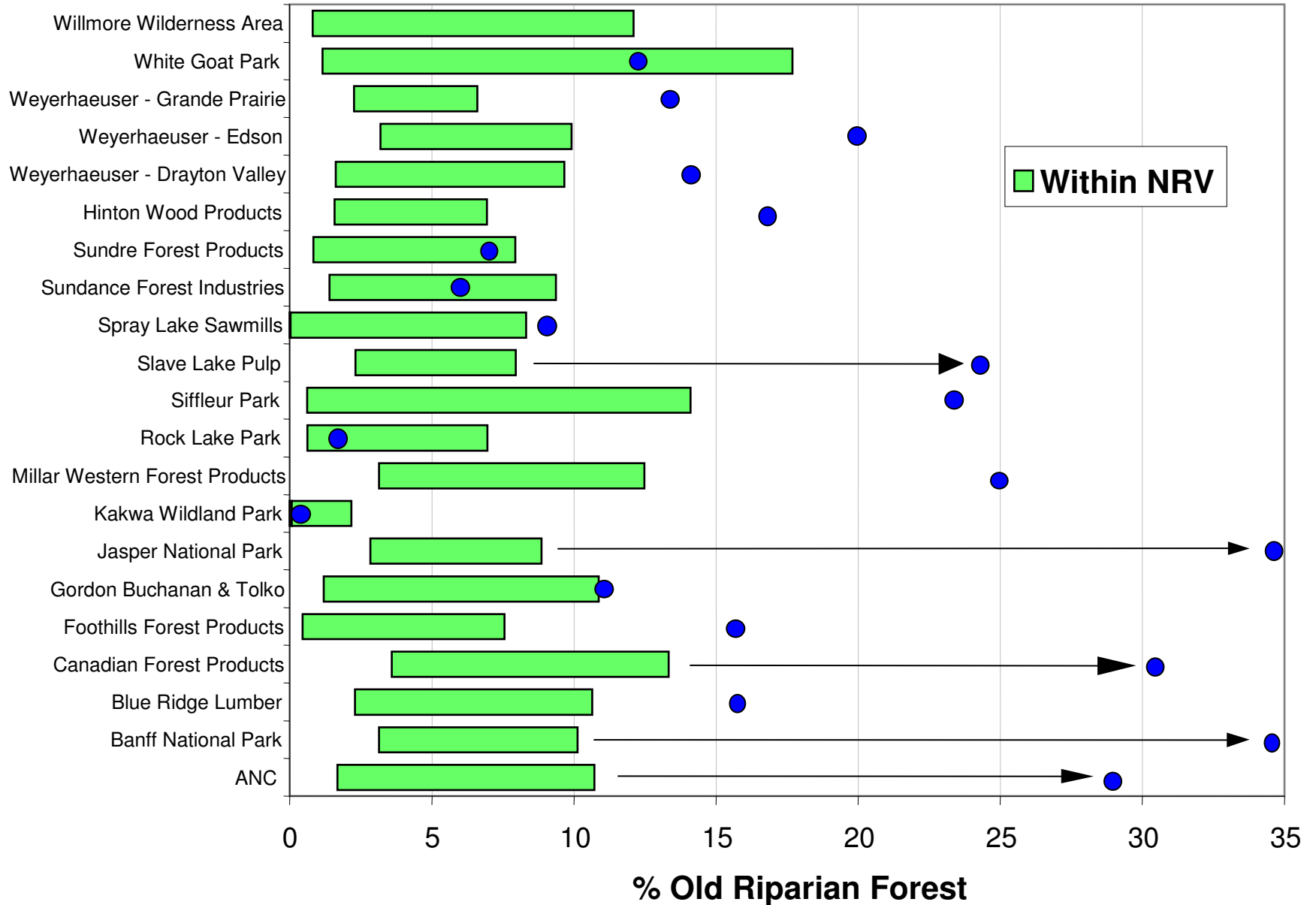
Red = Beyond NRV

Blue = Current Condition RV

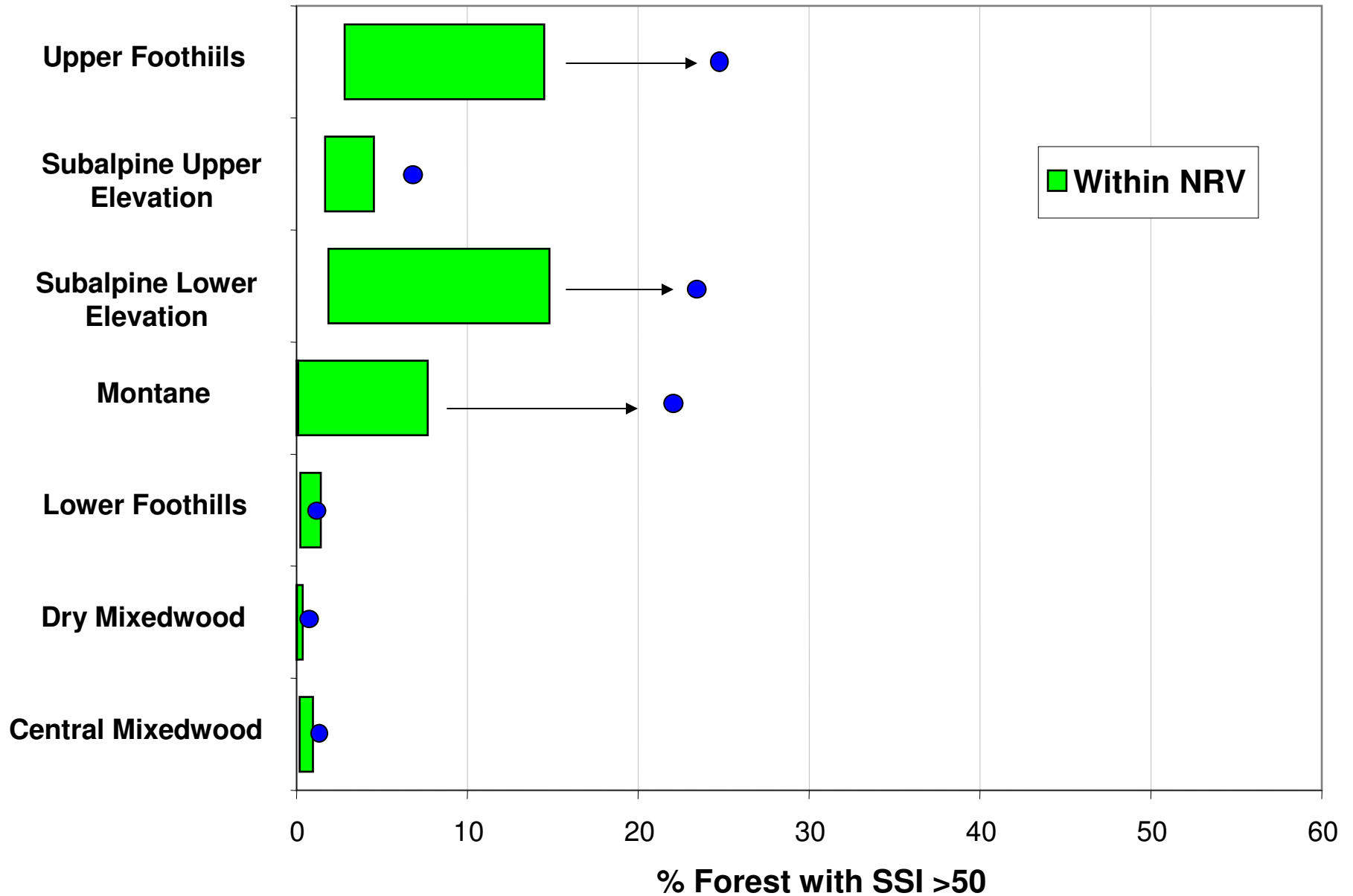
Old Forest NRV and Current Condition For "Headwaters" for the Upper Athabasca Healthy Landscape Study Area



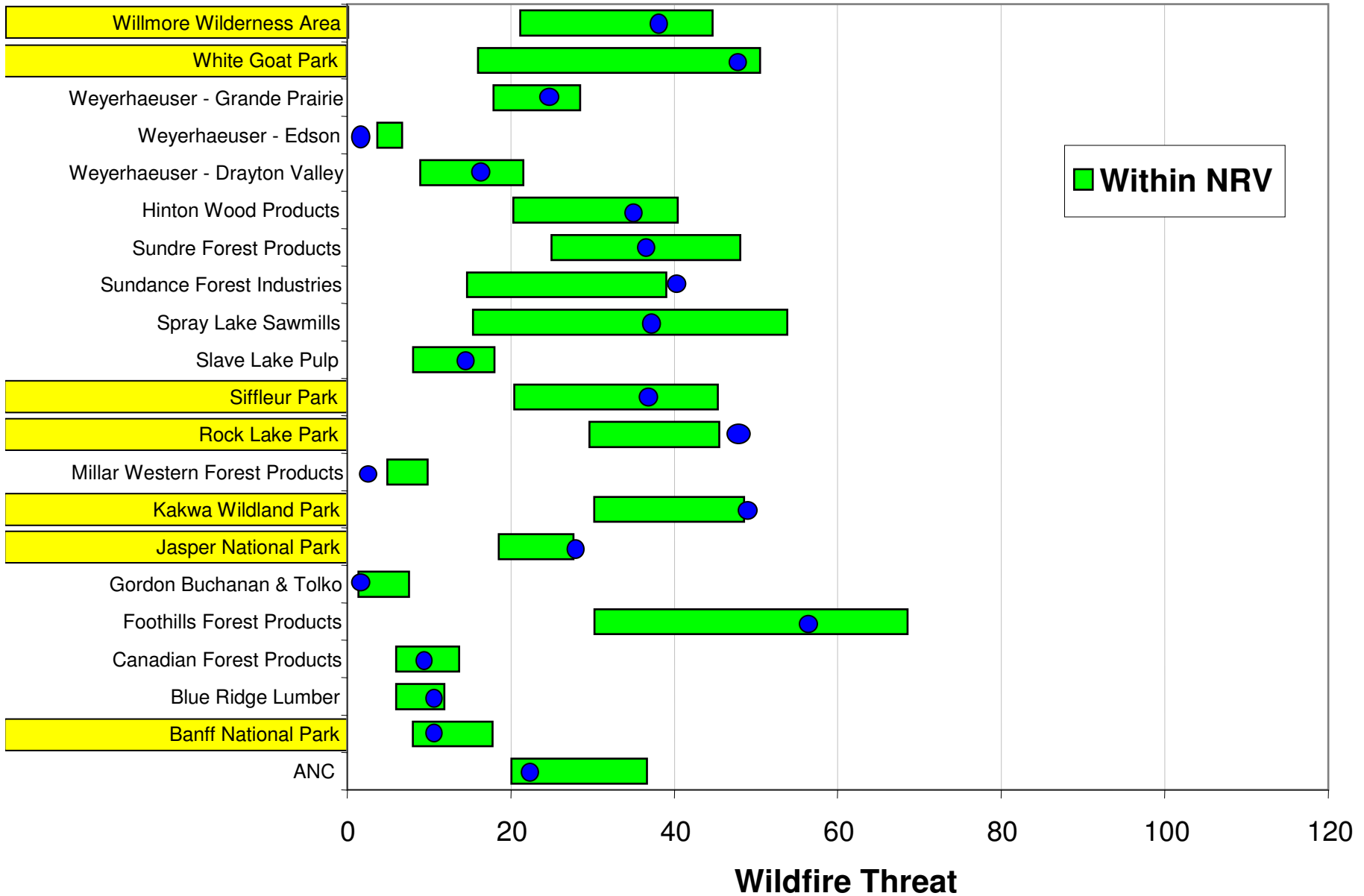
Old Riparian NRV and Current Condition by Jurisdiction for the Upper Athabasca Healthy Landscape Study Area



MPB Threat NRV and Current Condition by Natural Subregion for the Upper Athabasca Healthy Landscape Study Area



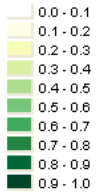
Wildfire Threat NRV and Current Condition by Jurisdiction for the Upper Athabasca Healthy Landscape Study Area



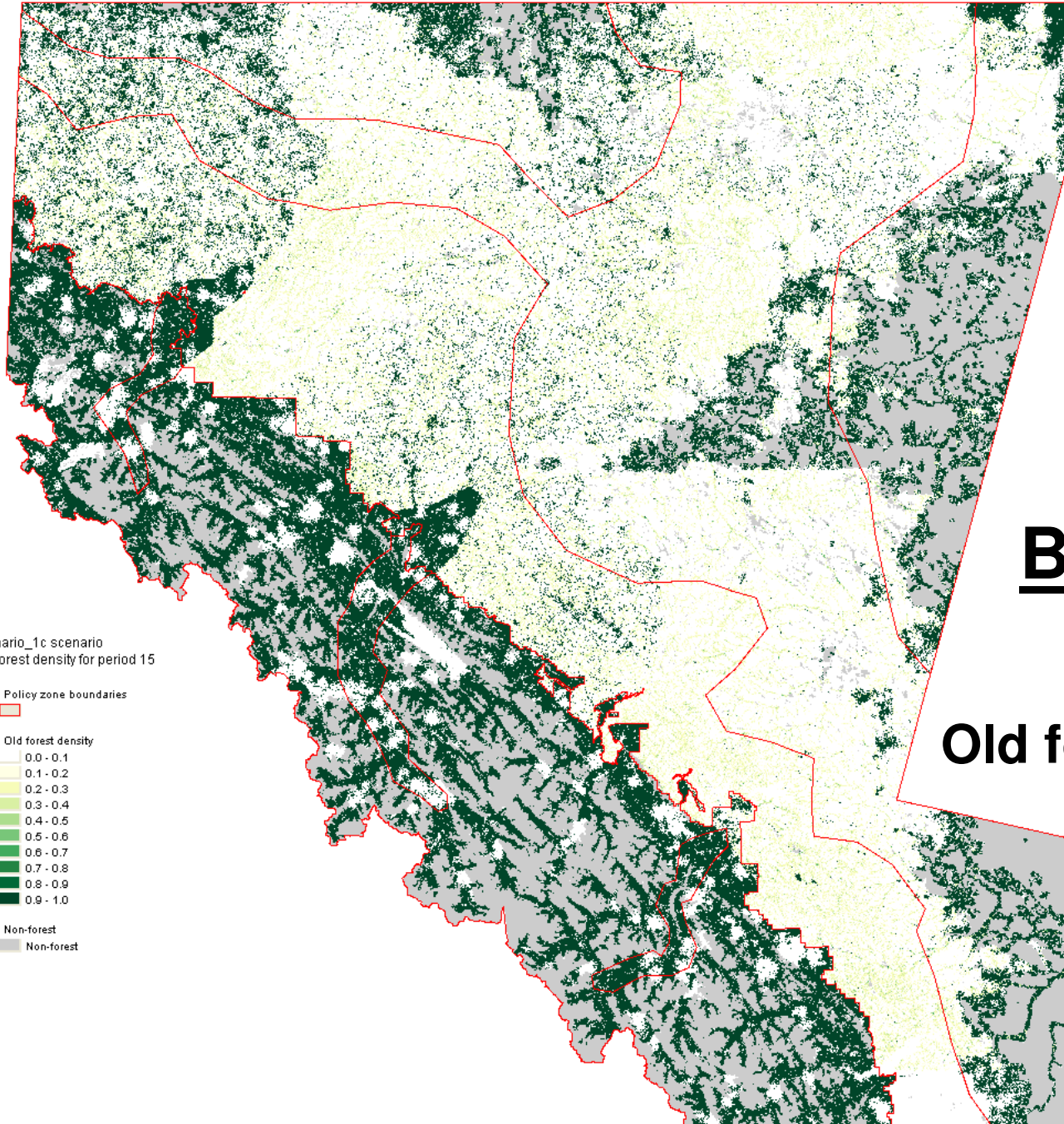
Scenario_1c scenario
Old forest density for period 15

Policy zone boundaries

Old forest density



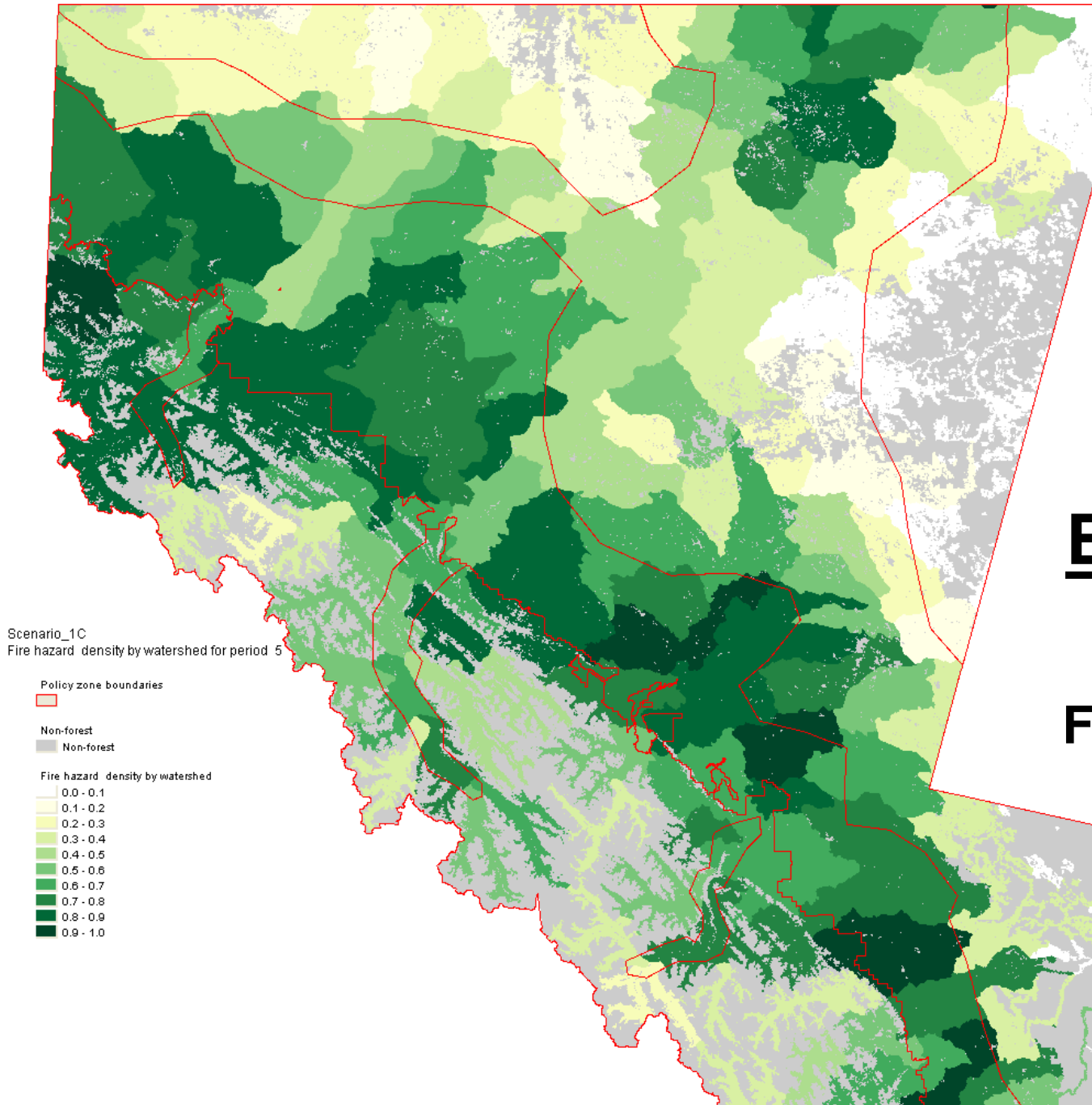
Non-forest
Non-forest



Business as Usual

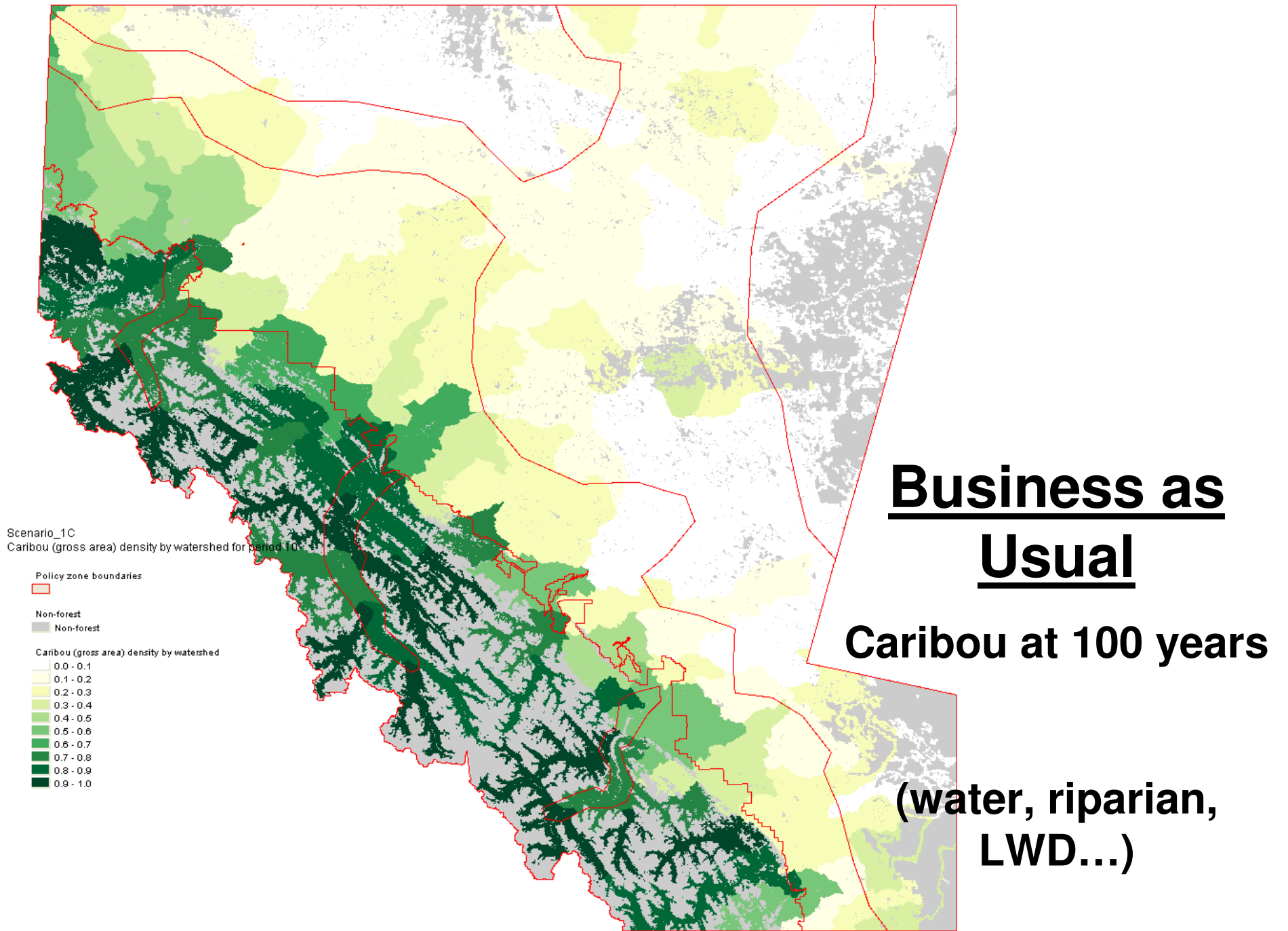
Old forest at 100 years

(AAC, 25%)

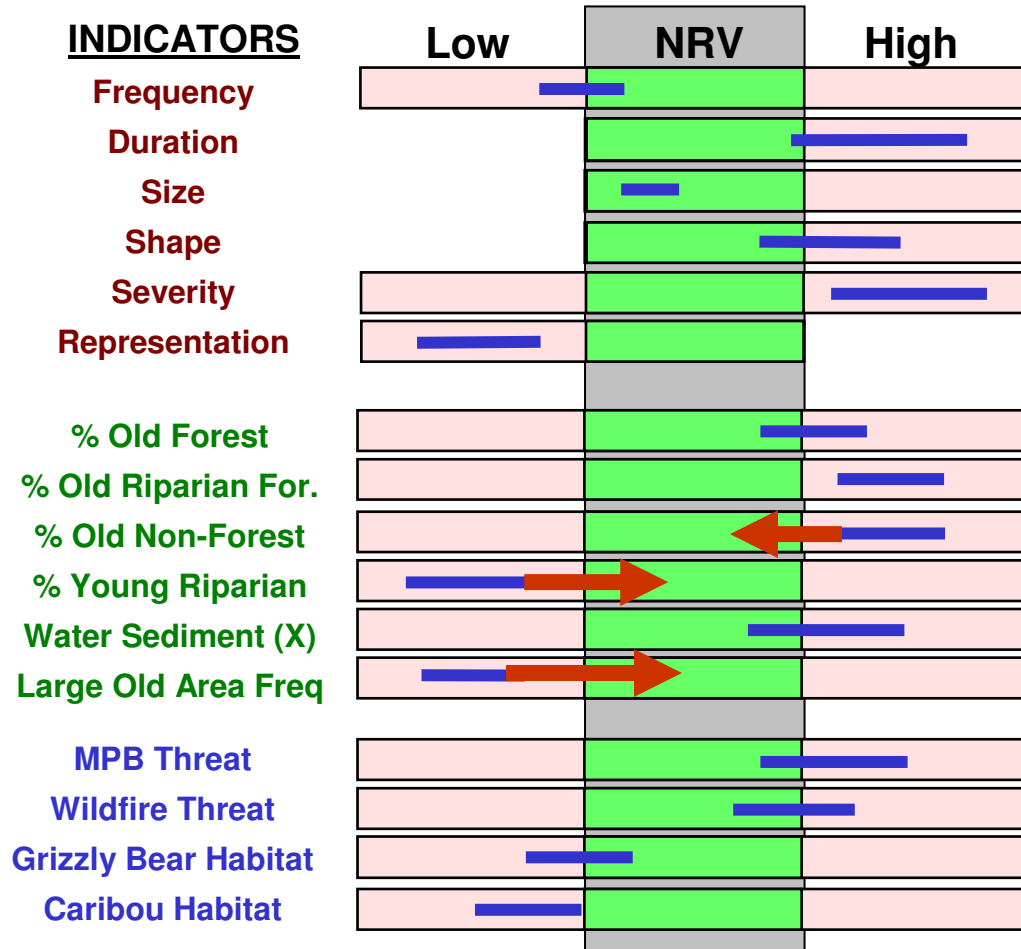


Business as Usual

Fire hazard at 50 years



Create a New Scenario:



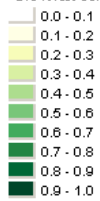
How? Ignore admin boundaries, rotate watersheds, allow very large disturbance events, ...and assume that fire is available.

Scenario_3c scenario
Old forest density for period 7

Policy zone boundaries



Old forest density



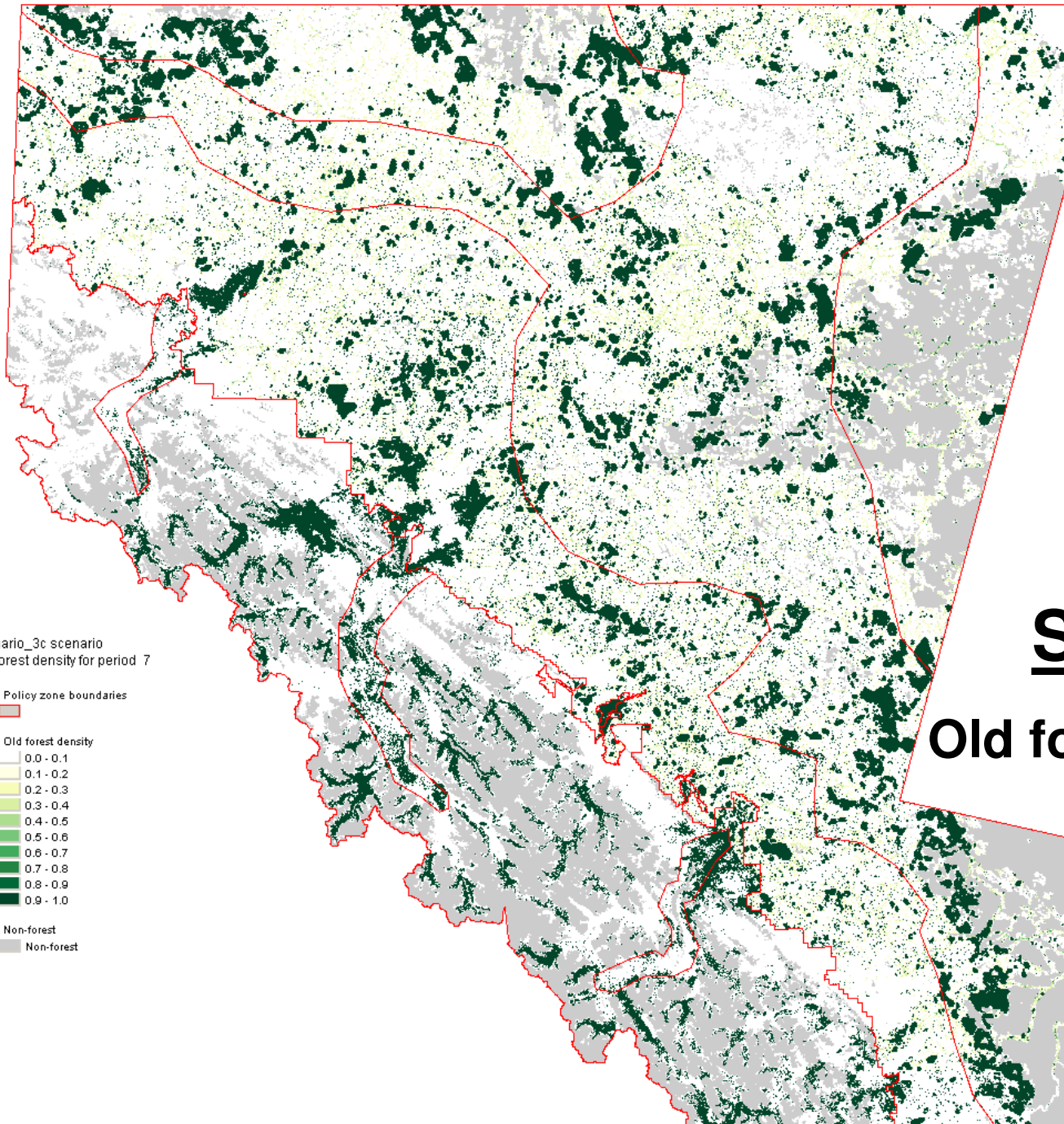
Non-forest



Non-forest

Scenario 9

Old forest at 100 years

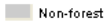


Scenario_9 scenario
Caribou (gross area) density by watershed for period 100

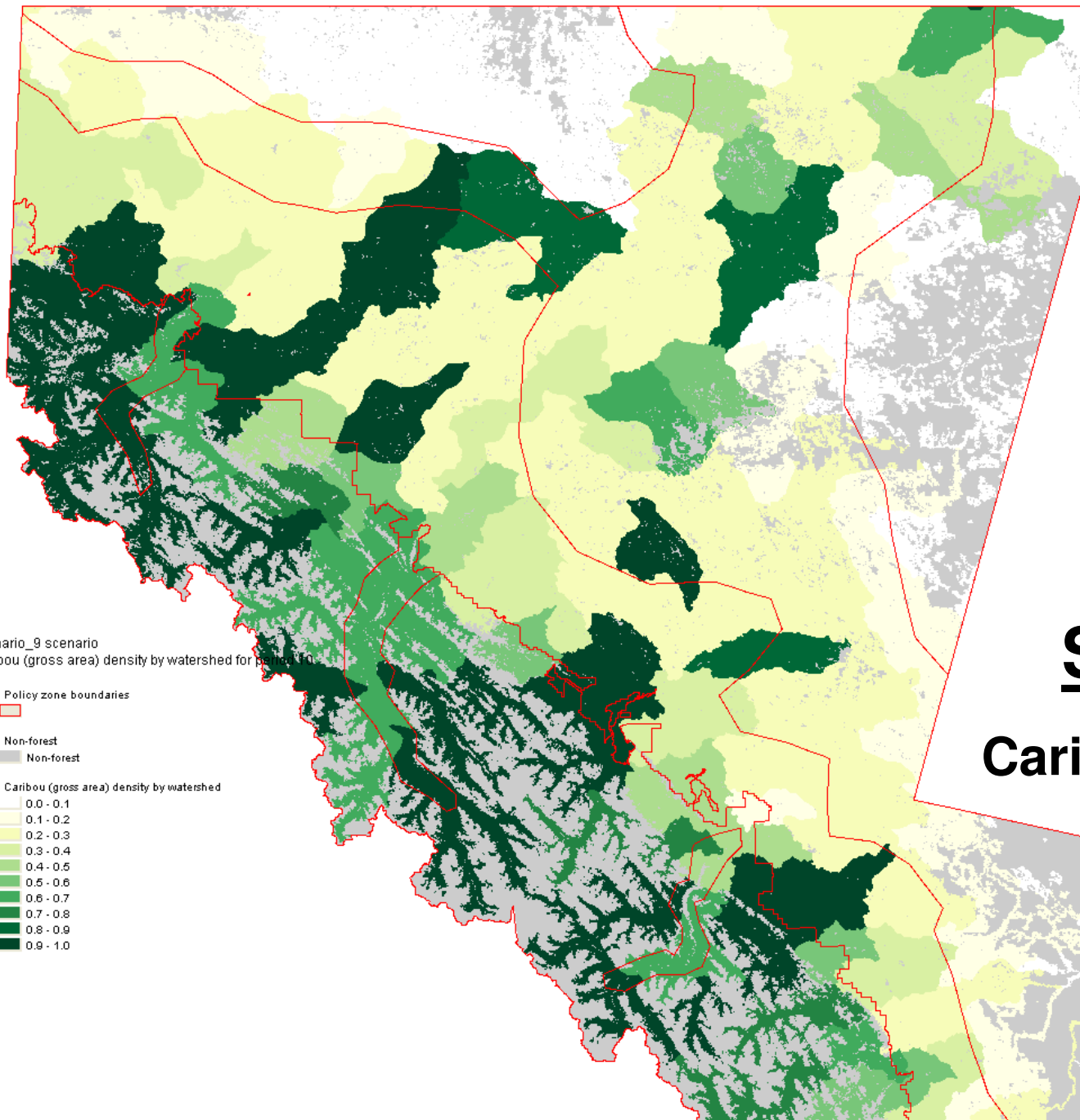
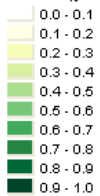
Policy zone boundaries



Non-forest



Caribou (gross area) density by watershed



Scenario 9

Caribou at 100 years

Does HL Have Legs?

- **Different perspective.**
 - inputs/outputs, process, importance of journey.
- **Tool & information mining.**
- **It resonates.**
 - Integrative
 - Cumulative
 - Simple & tractable
 - Science-based and ecosystem focused
 - Creates a new home for existing tools and new ideas
- **Plenty of policy challenges.**
 - Tenure (forest, energy)
 - Use of fire
 - Risk sharing
 - Roles and responsibilities
- **Change is hard.**

Thank you!



Parks
Canada

Parcs
Canada



Hinton Wood Products
A division of West Fraser Mills Ltd.

