



ONTARIO  
PARKS



## *Wildland Fire Conference, Canada 2010*

# **Ontario Parks Fire Management Planning; Two Different Parks Two Distinct Plans**

Presentation by:

Lisa Solomon, Park Biologist,  
Quetico Provincial Park

And

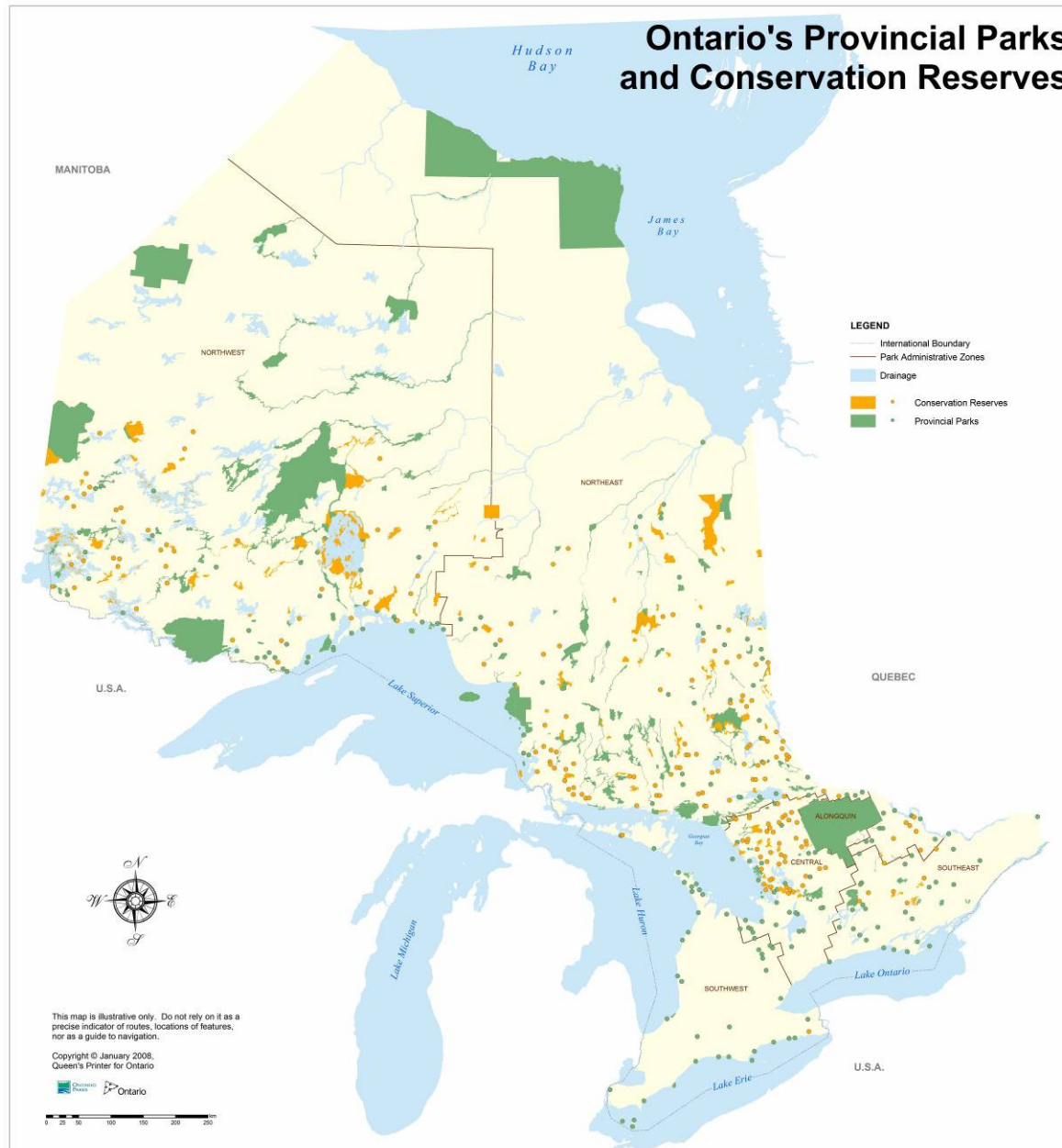
Dave Heaman, Fire Science and Planning Specialist,  
Project Lead Algonquin Provincial Park



ONTARIO  
PARKS



## Ontario's Provincial Parks and Conservation Reserves







ONTARIO  
PARKS



## Fire Response:

### – **Managed fire response**

- Full Response
- Modified Response
- Monitoring

## Fire Use

(a resource mgmt tool)

- **Prescribed Burning**
- **Prescribed (Natural) Fire**







ONTARIO  
PARKS



# *Quetico Provincial Park*



ONTARIO  
PARKS







ONTARIO  
PARKS

# Quetico Background

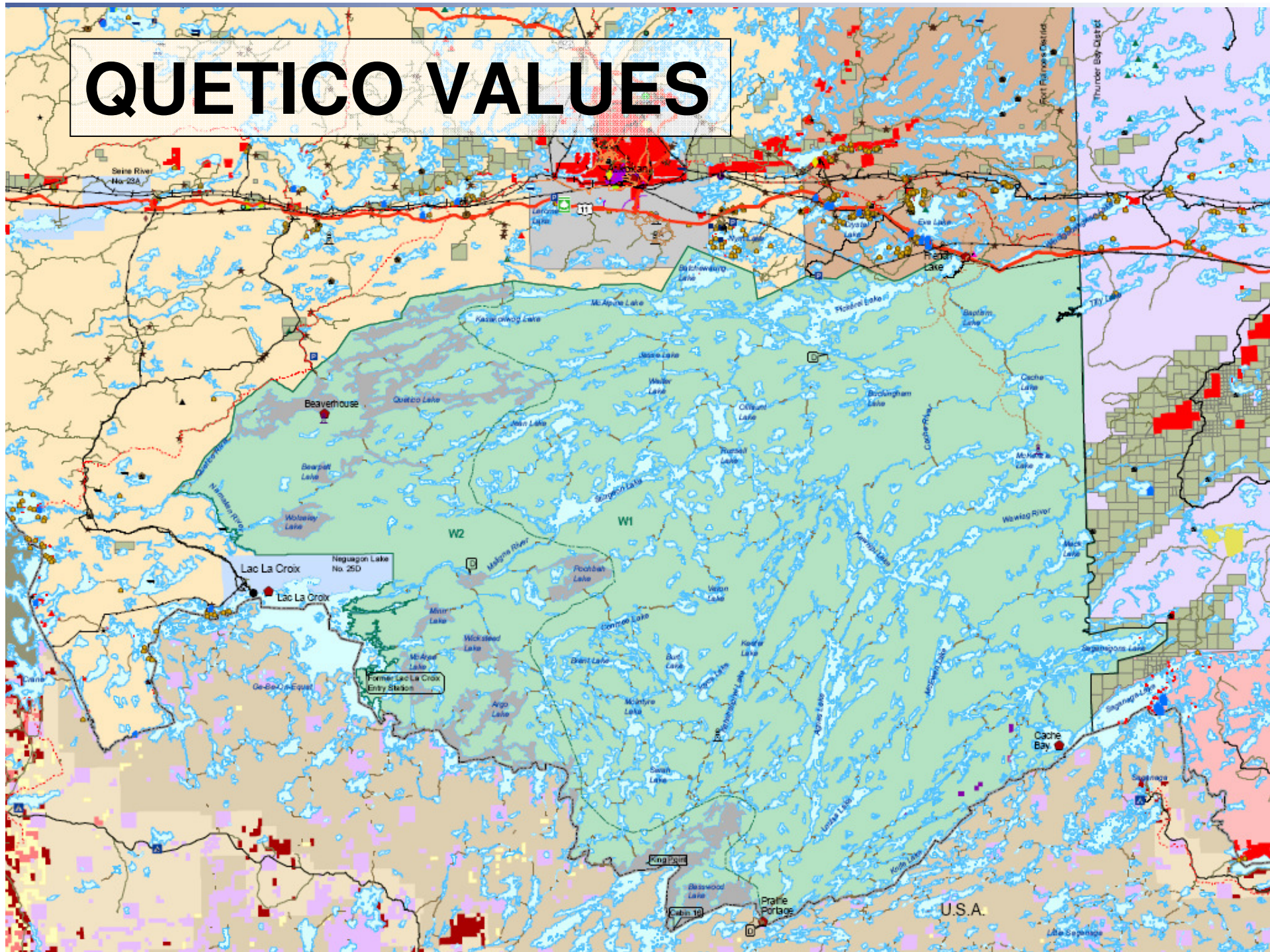


- Wilderness class park:  
“...substantial areas where the forces of nature are permitted to function freely”
- Infrastructure and values:
  - 5 ranger stations around periphery
  - 101 site campground
  - No designated interior campsites
  - 4 Forest Management Units abutting
  - U.S. National Forest to the south
  - First Nations community
  - Town of Atikokan





# QUETICO VALUES







ONTARIO  
PARKS

# The Forest



- Great Lakes- St. Lawrence Forest
- Mixed forest: Aspen, birch, jack pine and black spruce
- Historically white and red pine made up large part of forest
- Shift from variable age class to older senescent age class
- Understory mountain maple, with increasing balsam fir





# Forest Communities

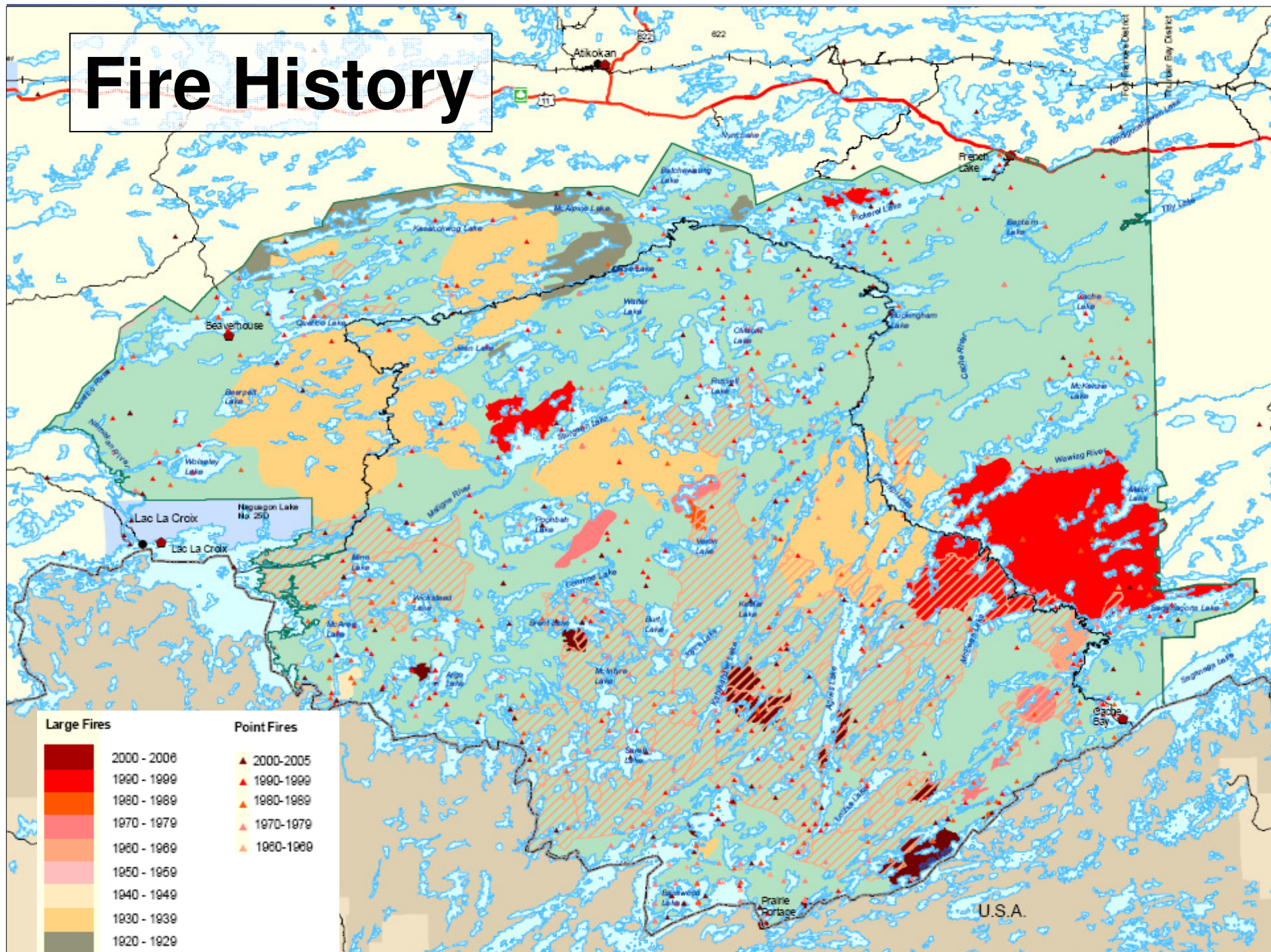
This map displays the distribution of various forest communities across a large area, likely in the Lake Superior region. The map is color-coded according to the legend, showing a complex mosaic of different forest types. Key features include:

- Legend:** A vertical list of forest communities with corresponding color swatches: Bedrock (grey), Burns (orange), Coniferous Forest (dark green), Deciduous Forest (light green), Mixed Forest (dark red), Open Bog (light purple), Open Fen (light pink), Regenerating Depletion (pink), Sparse Forest (yellow), Treed Bog (light green), Treed Fen (blue), and No Data (white).
- Geographic Labels:** Numerous lakes and locations are labeled, including Beaverhouse, French Lake, Pickering Lake, McNamee Lake, and others. The coastline of Lake Superior is visible on the right side.
- Map Features:** The map shows a high density of forest communities, with Mixed Forest (dark red) and Burns (orange) being prominent. The distribution is highly fragmented, reflecting the complex terrain and history of the region.





# Fire History







ONTARIO  
PARKS



# *Algonquin Provincial Park*



ONTARIO  
PARKS







ONTARIO  
PARKS



Doug Hamilton





ONTARIO  
PARKS



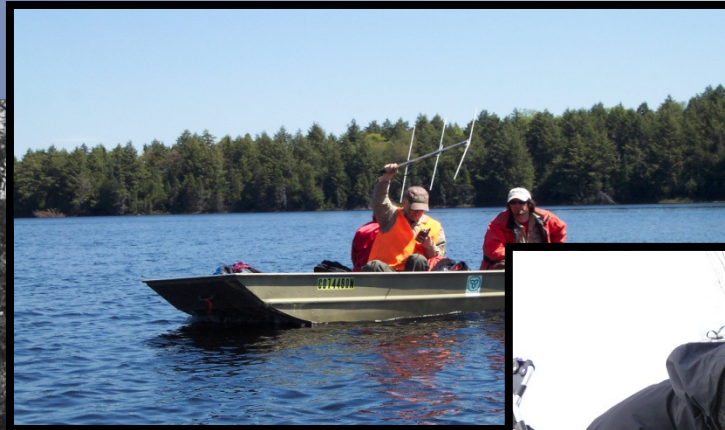




ONTARIO  
PARKS



ONTARIO  
DEPARTMENT OF  
LANDS AND FORESTS  
HARKNESS LABORATORY  
OF FISHERIES RESEARCH





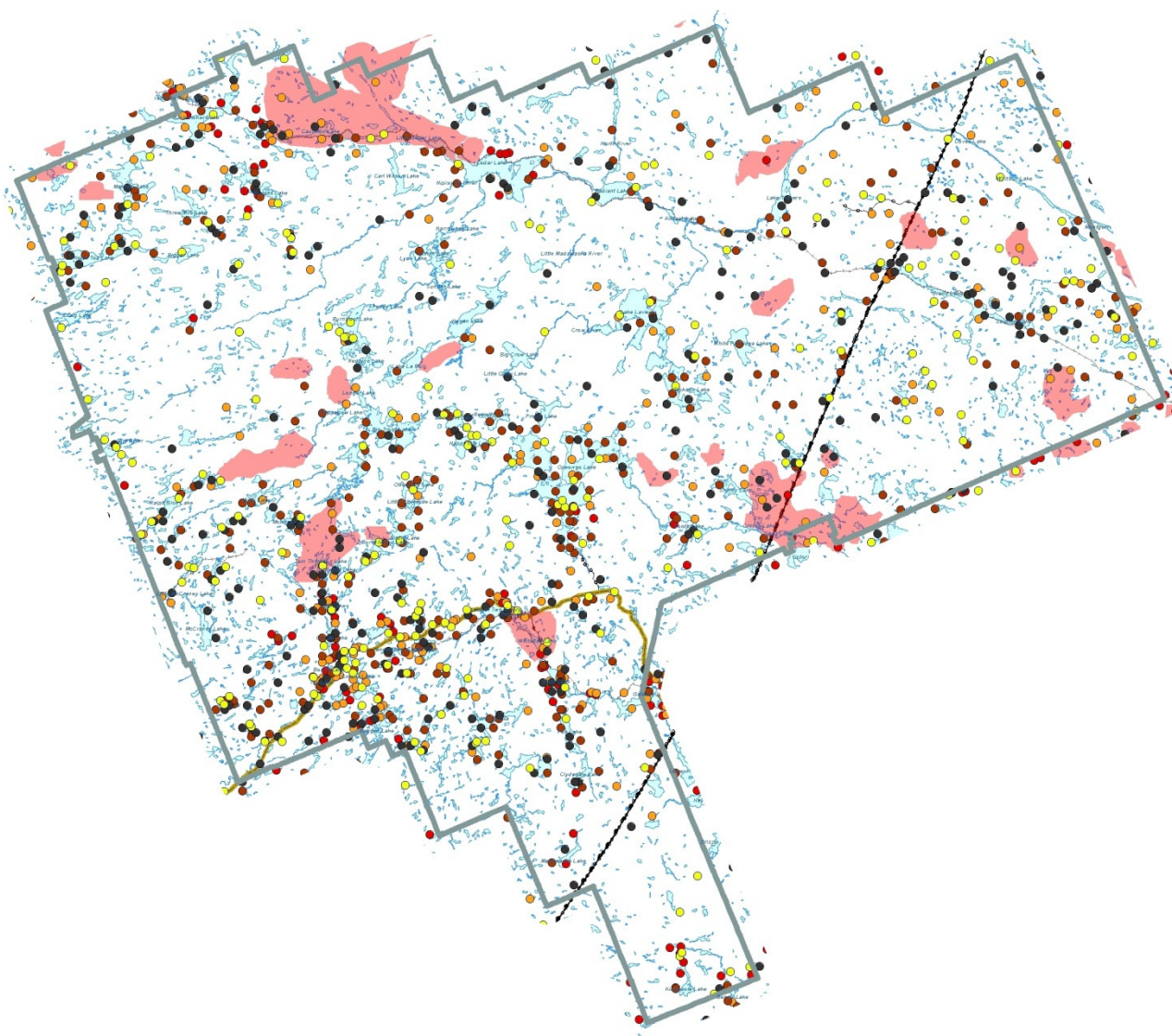


ONTARIO  
PARKS



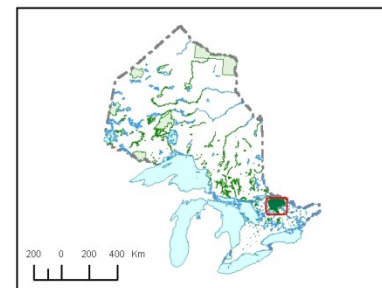
MAP 5

FIRE HISTORY



ALGONQUIN  
PROVINCIAL PARK

Provincial Reference Map



LEGEND

Base Features

- Abandoned Railway
- Highway 60
- Transmission Line
- Lake
- Algonquin Park Forest

Fire History Features

- Fire Spot 1960s  
436 Fires  
Total Hectares = 2142
- Fire Spot 1970s  
468 Fires  
Total Hectares = 496
- Fire Spot 1980s  
349 Fires  
Total Hectares = 175
- Fire Spot 1990s  
304 Fires  
Total Hectares = 178
- Fire Spot 2000 - 2009  
215 Fires  
Total Hectares = 101
- Large Fires 1920s - Present  
Total Hectares = 50,359



Published March 2010  
© 2010, Queen's Printer for Ontario

This map should not be relied on as a precise indicator of routes or locations, nor as a guide to navigation. The Ontario Ministry of Natural Resources (OMNR) shall not be liable in any way for the use of, or reliance upon, this map or any information on this map.

Projection: UTM Zone 17  
Datum: North American Datum 1983  
Base derived from: Ontario Ministry of Natural Resources  
NRVIS (Natural Resource Value Information System) database  
Produced by: Algonquin Park Fire Management Plan  
Planning Team Ontario Parks, Algonquin Park GIS Office





ONTARIO  
PARKS



MAP 6

FIRE GROUPINGS - FIRE REGIME



ALGONQUIN  
PROVINCIAL PARK

Provincial Reference Map



LEGEND

Base Features

- Abandoned Railway
- Highway 60
- Transmission Line
- Ecodistrict Boundary
- Algonquin Park Forest
- Lake or River

Fire Features

ELC Fire Groupings

- |    |    |    |
|----|----|----|
| A1 | B3 | E1 |
| A2 | C1 | E2 |
| B1 | C2 |    |
| B2 | D  |    |

1 centimeter equals 4.65 kilometers



Published April 2010  
© 2010, Queen's Printer for Ontario

This map should not be relied on as a precise indicator of routes or locations, nor as a guide to navigation. The Ontario Ministry of Natural Resources (OMNR) shall not be liable in any way for the use of, or reliance upon, this map or any information on this map.

Projection: UTM Zone 17  
Datum: North American Datum 1983  
Base derived from: Ontario Ministry of Natural Resources  
NRVS (Natural Resource Value Information System) database  
Produced by: Algonquin Park Fire Management Plan  
Planning Team Ontario Parks, Algonquin Park GIS Office





ONTARIO  
PARKS



# Fire Management Planning in Quetico







ONTARIO  
PARKS



### ***Fire Plan Goal:***

- To approximate the natural role of fire in perpetuation of Quetico's ecological processes, within the constraints of personal injury, value loss, economic and social disruption.*





ERROR: undefined  
OFFENDING COMMAND: '~

STACK: