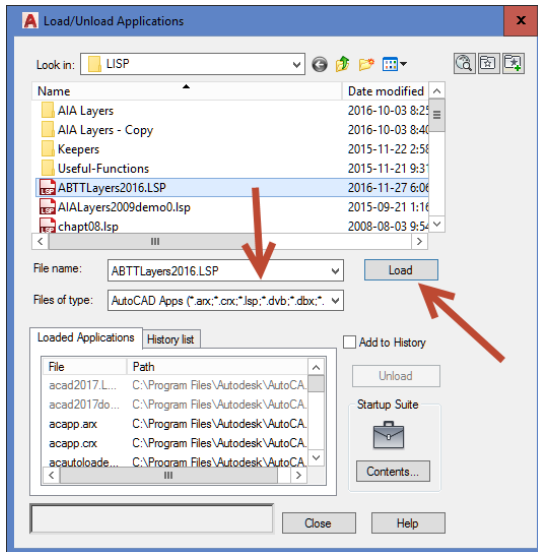


Loading and running a LISP application to load ABTT layers

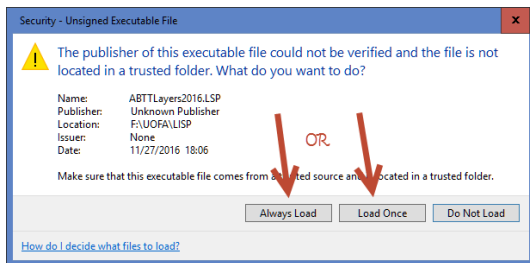
On the command line type: APPLOAD

Search for the file ABTTLayers2016.LSP. Double click to put it in the File name box.

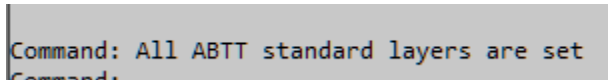


Click the Load button.

If a security warning pops up, click Always Load or Load Once.



Press F2 and see if your command line says:



Check your layer list to see if it is populated with the ABTT layers.

If not, you may need to type "ABTTLayers2016" on the command line to activate the list file.