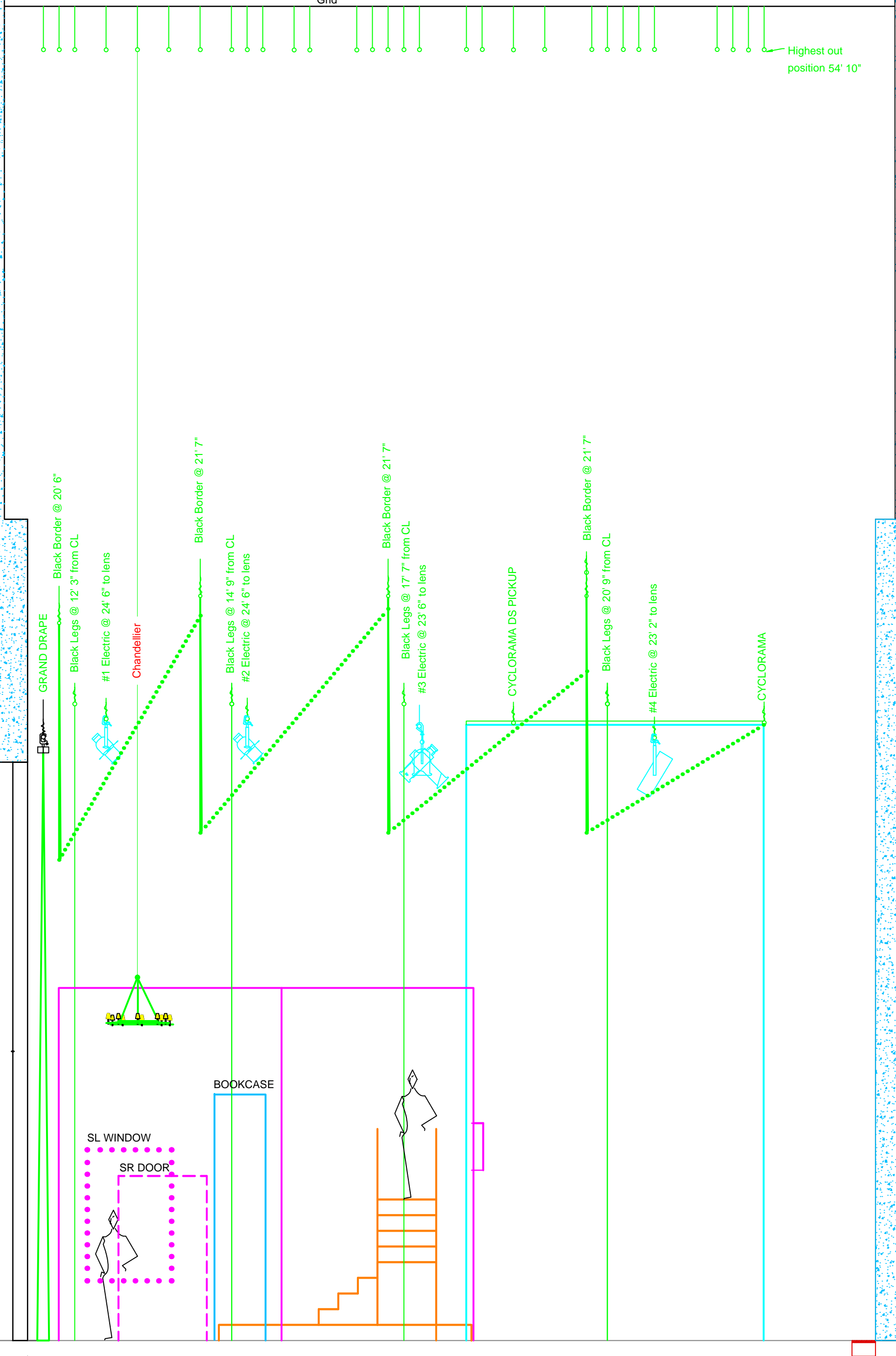


**Orchestra pit**  
 Covers on = -3' 3 3/4" (audience height)  
 Covers off = -8' 10 3/4" (see note)

Line#	From	Grid
01	0' 0"	GRAND DRAPPE
02	1' 4"	Black Border @ 20' 6"
03	2' 0"	Black Legs @ 12' 3" from CL
04	3' 4"	#1 Electric @ 24' 6" to lens
05	4' 6"	Chandelier
06	6' 0"	Black Border @ 21' 7"
07	7' 4"	Black Legs @ 14' 9" from CL
08	8' 6"	#2 Electric @ 24' 6" to lens
09	9' 4"	Black Border @ 21' 7"
10	10' 0"	Black Legs @ 17' 7" from CL
11	11' 4"	#3 Electric @ 23' 6" to lens
12	12' 0"	Black Border @ 21' 7"
13	14' 0"	Black Legs @ 14' 9" from CL
14	14' 8"	#2 Electric @ 24' 6" to lens
15	15' 4"	Black Border @ 21' 7"
16	16' 0"	Black Legs @ 17' 7" from CL
17	16' 8"	#3 Electric @ 23' 6" to lens
18	18' 8"	Black Border @ 21' 7"
19	19' 4"	CYCLORAMA DS PICKUP
20	20' 8"	Black Legs @ 20' 9" from CL
21	22' 0"	Black Border @ 21' 7"
22	24' 0"	Black Legs @ 20' 9" from CL
23	24' 8"	#4 Electric @ 23' 2" to lens
24	25' 4"	Black Border @ 21' 7"
25	26' 0"	CYCLORAMA
26	26' 8"	Black Border @ 21' 7"
27	29' 4"	Black Border @ 21' 7"
28	30' 0"	Black Border @ 21' 7"
29	30' 8"	Black Border @ 21' 7"
30	31' 4"	CYCLORAMA



**NOTES :**

- Extreme sightline

Drapery sizes:

Leg	24' X 10'
Border	10' X 54'
Cyc	27' X 54'
Scrim	27' X 54'
Grand Drappe	27' X 48'

Orchestra pit covers are labour intensive.

**Festival Place**

100 Festival Way,  
 Sherwood Park, Alberta T8A 5T2  
 (780) 464-2852 Fax (780) 499-0743 <http://www.festivalplace.ab.ca/>  
 House Technician Rob Tkachyk [robbiet@festivalplace.ab.ca](mailto:robbiet@festivalplace.ab.ca)

**Box Set Section SOFT GOODS**

Scale 1/4" = 1'      October 2004

Dn: T.W. CAD491@shaw.ca      Sheet 3 of 5