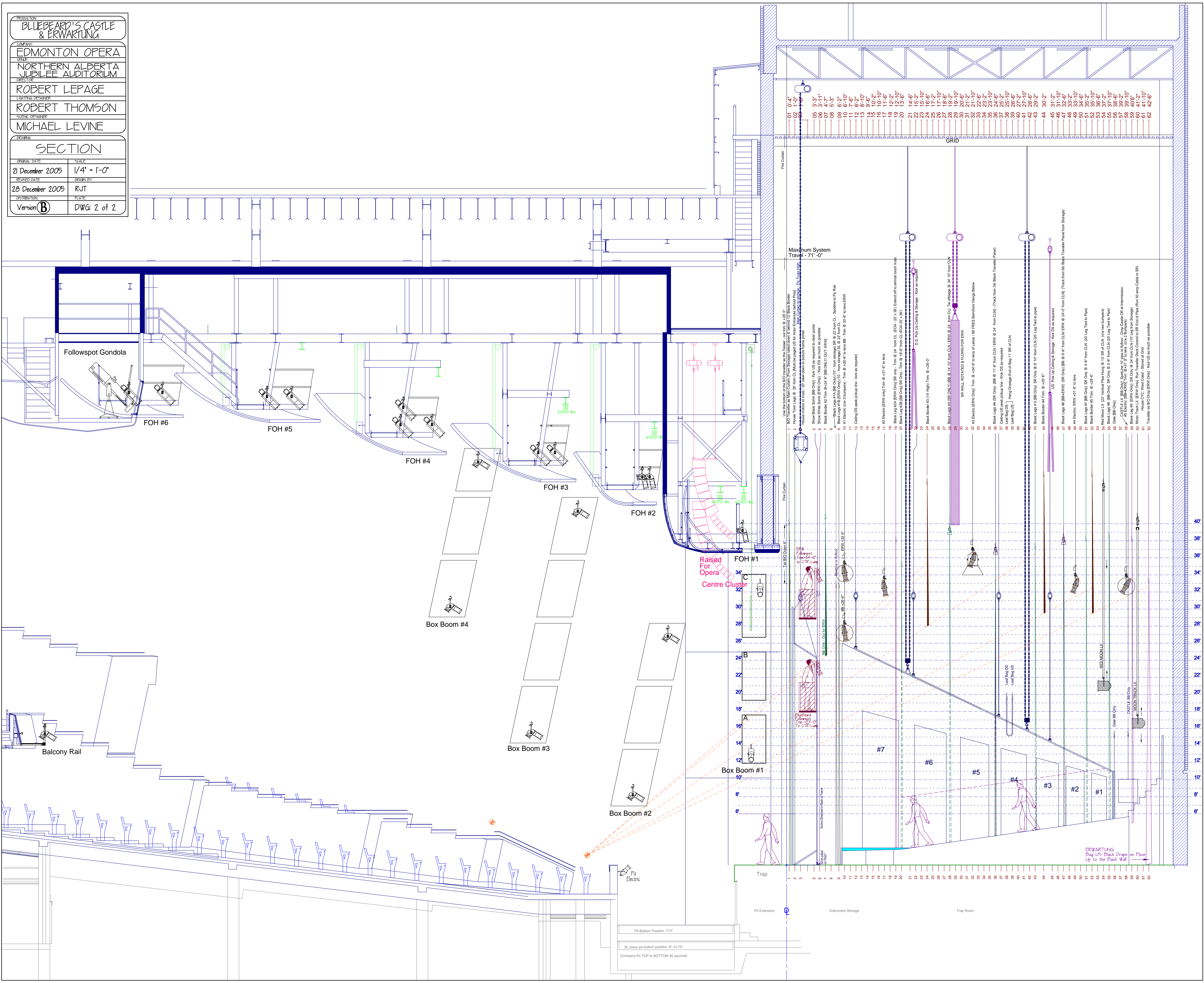


PRODUCTION BLUEBEARD'S CASTLE & ERWARTUNG	
COMPANY EDMONTON OPERA	
VENUE NORTHERN ALBERTA JUBILEE AUDITORIUM	
DIRECTOR ROBERT LEPAGE	
LIGHTING DESIGNER ROBERT THOMSON	
SCENE DESIGNER MICHAEL LEVINE	
DRAWING SECTION	
ORIGINAL DATE 21 December 2005	SCALE 1/4" = 1'-0"
REVISED DATE 28 December 2005	DRAWN BY RJT
DISTRIBUTION Version B	PLATE DWG. 2 of 2



- 01 0'-4"
02 0'-4"
03 0'-4"
04 0'-4"
05 3'-3"
06 3'-11"
07 4'-7"
08 5'-3"
09 6'-2"
10 6'-2"
11 7'-6"
12 8'-2"
13 8'-10"
14 9'-6"
15 9'-6"
16 10'-10"
17 11'-6"
18 12'-2"
19 12'-2"
20 12'-10"
21 13'-6"
22 14'-5"
23 15'-10"
24 16'-6"
25 17'-2"
26 17'-2"
27 18'-6"
28 19'-2"
29 19'-10"
30 20'-6"
31 21'-10"
32 21'-10"
33 22'-6"
34 23'-2"
35 23'-10"
36 24'-6"
37 25'-2"
38 25'-10"
39 26'-6"
40 27'-2"
41 27'-2"
42 28'-6"
43 29'-2"
44 30'-2"
45 31'-2"
46 31'-10"
47 33'-2"
48 33'-10"
49 33'-10"
50 35'-2"
51 35'-2"
52 35'-10"
53 36'-6"
54 37'-2"
55 36'-6"
56 36'-6"
57 39'-2"
58 39'-10"
59 40'-6"
60 40'-6"
61 41'-10"
62 42'-6"
- Use the bottom of the B/O transfer as the Transfer-out line @ +28'-2"
1. SR Lugs @ 12' (BB Only) - Kick US as required to clear portal
2. House Lugs @ 20' from CL (Kick US as required to clear portal)
3. House Lugs to transfer - 20' base down to picture frame portal
4. House Lugs @ 20' from CL (Kick US as required to clear portal)
5. Show Black Screen (BB Only) - Kick US as required to clear portal
6. Show White Screen (BB Only) - Kick US as required to clear portal
7. Black Boxer #2 Trim @ 4'-6" (BB ONLY) (OUT: ERW)
8. Black Lugs #1A (BB Only) (17'-0" from stage SR @ 22' from CL - Spotline to Fly Rail)
9. Black Lugs #1B (BB Only) (17'-0" from stage SR @ 22' from CL - Spotline to Fly Rail)
10. #1 Electric (BB Only) - 10' @ 4'-6" to SR (BB Only) @ 30'-6" to line ERW
11. #1 Electric (BB Only) - 10' @ 4'-6" to SR (BB Only) @ 30'-6" to line ERW
12. Ceiling DS peak pickup line - Kick as required
13. #1 Electric (BB Only) - 10' @ 4'-6" to SR (BB Only) @ 30'-6" to line ERW
14. #1 Electric (BB Only) - 10' @ 4'-6" to SR (BB Only) @ 30'-6" to line ERW
15. #1 Electric (BB Only) - 10' @ 4'-6" to SR (BB Only) @ 30'-6" to line ERW
16. #1 Electric (BB Only) - 10' @ 4'-6" to SR (BB Only) @ 30'-6" to line ERW
17. #2 Electric (BB Only) Trim @ +31'-4" to line
18. Black Lugs #3 (BB Only) SR Only - 11'-6" from CLN (ERW @ 24' from CLN) (EOM 20' x 30') Electric off to shared back truss
19. Black Lugs #3 (BB Only) SR Only - 11'-6" from CLN (ERW @ 24' from CLN) (EOM 20' x 30')
20. Black Lugs #3 (BB Only) SR Only - 11'-6" from CLN (ERW @ 24' from CLN) (EOM 20' x 30')
21. Black Lugs #3 (BB Only) SR Only - 11'-6" from CLN (ERW @ 24' from CLN) (EOM 20' x 30')
22. Black Lugs #3 (BB Only) SR Only - 11'-6" from CLN (ERW @ 24' from CLN) (EOM 20' x 30')
23. US Pick-Up Ceiling & Storage - Kick as required
24. Black Boxer #3 (14' High) Trim @ +29'-0"
25. Black Boxer #3 (14' High) Trim @ +29'-0"
26. Black Boxer #3 (14' High) Trim @ +29'-0"
27. SR WALL ROTATED & FLOWN FOR ERW
28. Black Lugs #3 (BB ONLY) (BB @ 11'-6" from CLN, ERW @ 24' from CLN) Tie off @ 34' 10" from CLN
29. SR WALL ROTATED & FLOWN FOR ERW
30. SR WALL ROTATED & FLOWN FOR ERW
31. SR WALL ROTATED & FLOWN FOR ERW
32. SR WALL ROTATED & FLOWN FOR ERW
33. SR WALL ROTATED & FLOWN FOR ERW
34. SR WALL ROTATED & FLOWN FOR ERW
35. Black Lugs #4 (BB Only) (BB @ 11'-6" from CLN, ERW @ 24' from CLN) (Check from SR Black Traveller Hangers)
36. Black Lugs #4 (BB Only) (BB @ 11'-6" from CLN, ERW @ 24' from CLN) (Check from SR Black Traveller Hangers)
37. Ceiling US peak pickup line - Kick US as required
38. Leaf Bag US
39. Leaf Bag US
40. Leaf Bag US
41. Leaf Bag US
42. Leaf Bag US
43. Black Lugs #4 (BB Only) (BB @ 11'-6" from CLN, ERW @ 24' from CLN) (20' Log Tied to Pipe)
44. Black Boxer #4 Trim @ +29'-0"
45. US Pick-Up Ceiling & Storage - Kick US as required
46. Black Lugs #6 (BB-ERW) (SR Only) (BB @ 6'-6" from CLN, ERW @ 24'-0" from CLN) (Track from SR Black Traveller Panel from Storage)
47. Black Lugs #6 (BB-ERW) (SR Only) (BB @ 6'-6" from CLN, ERW @ 24'-0" from CLN) (Track from SR Black Traveller Panel from Storage)
48. #4 Electric (BB-ERW) +11'-6" to line
49. #4 Electric (BB-ERW) +11'-6" to line
50. Black Boxer #5 Trim @ +29'-0"
51. Black Boxer #5 Trim @ +29'-0"
52. Black Boxer #5 Trim @ +29'-0"
53. Black Lugs #7 (BB Only) (BB @ 11'-6" from CLN, ERW @ 24' from CLN) (20' Log Tied to Pipe)
54. Black Lugs #7 (BB Only) (BB @ 11'-6" from CLN, ERW @ 24' from CLN) (20' Log Tied to Pipe)
55. Black Lugs #7 (BB Only) (BB @ 11'-6" from CLN, ERW @ 24' from CLN) (20' Log Tied to Pipe)
56. Cast (BB Only)
57. CASTLE (BB Only) Spacing 10' pipe to flybar - Drop Cast Off at Intersection
58. #5 Electric (BB-ERW) Trim @ +31'-9" to line (over 2' barrier)
59. #5 Electric (BB-ERW) Trim @ +31'-9" to line (over 2' barrier)
60. #5 Electric (BB-ERW) Trim @ +31'-9" to line (over 2' barrier)
61. House CYC - West Coast - Stored at Grid
62. Traveller as B/O Drop (BB Only) - Kick US as much as possible