

# **Social Capital Matters: The Case of Immigrants in Canada**

**Abdie Kazemipur**  
Department of Sociology  
University of Lethbridge

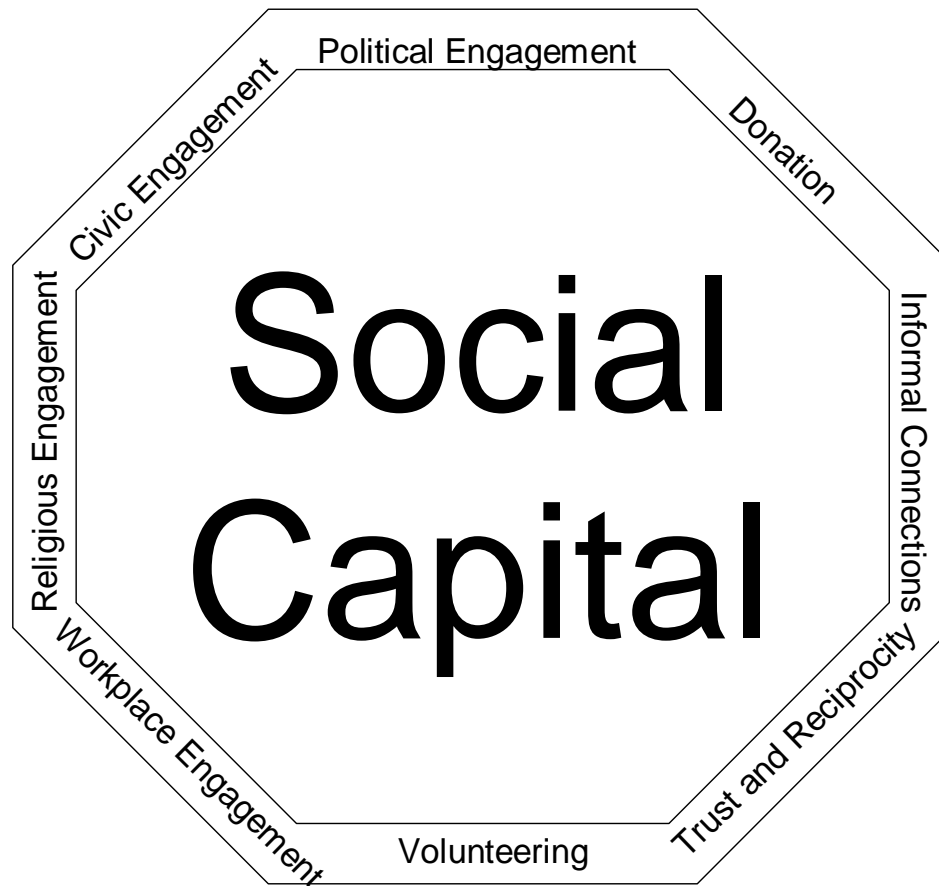
PCERII Annual Planning Meeting  
February 10-11, 2006

# Disclaimer

- “The research and analysis in this study is based on data from Statistics Canada and the opinions expressed do not represent the views of Statistics Canada”

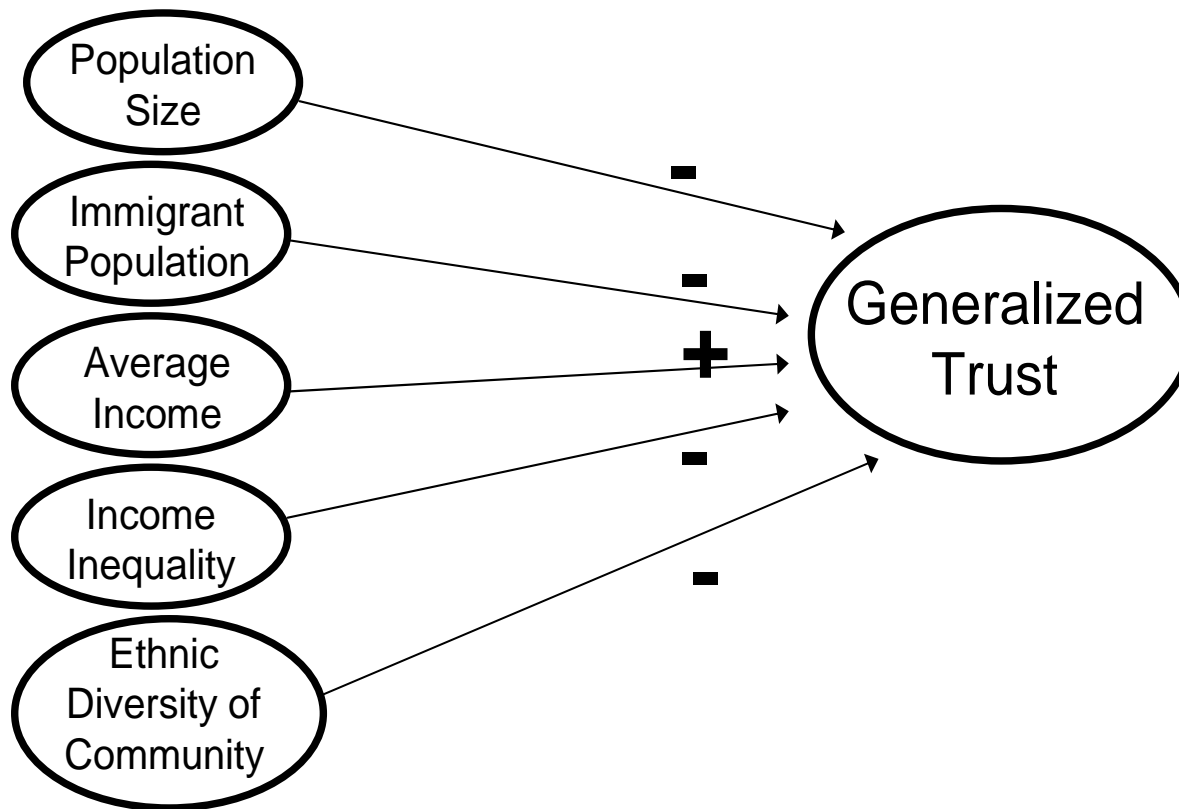
# What is social capital?

A multi-dimensional phenomenon that fills the social space between State and Individual



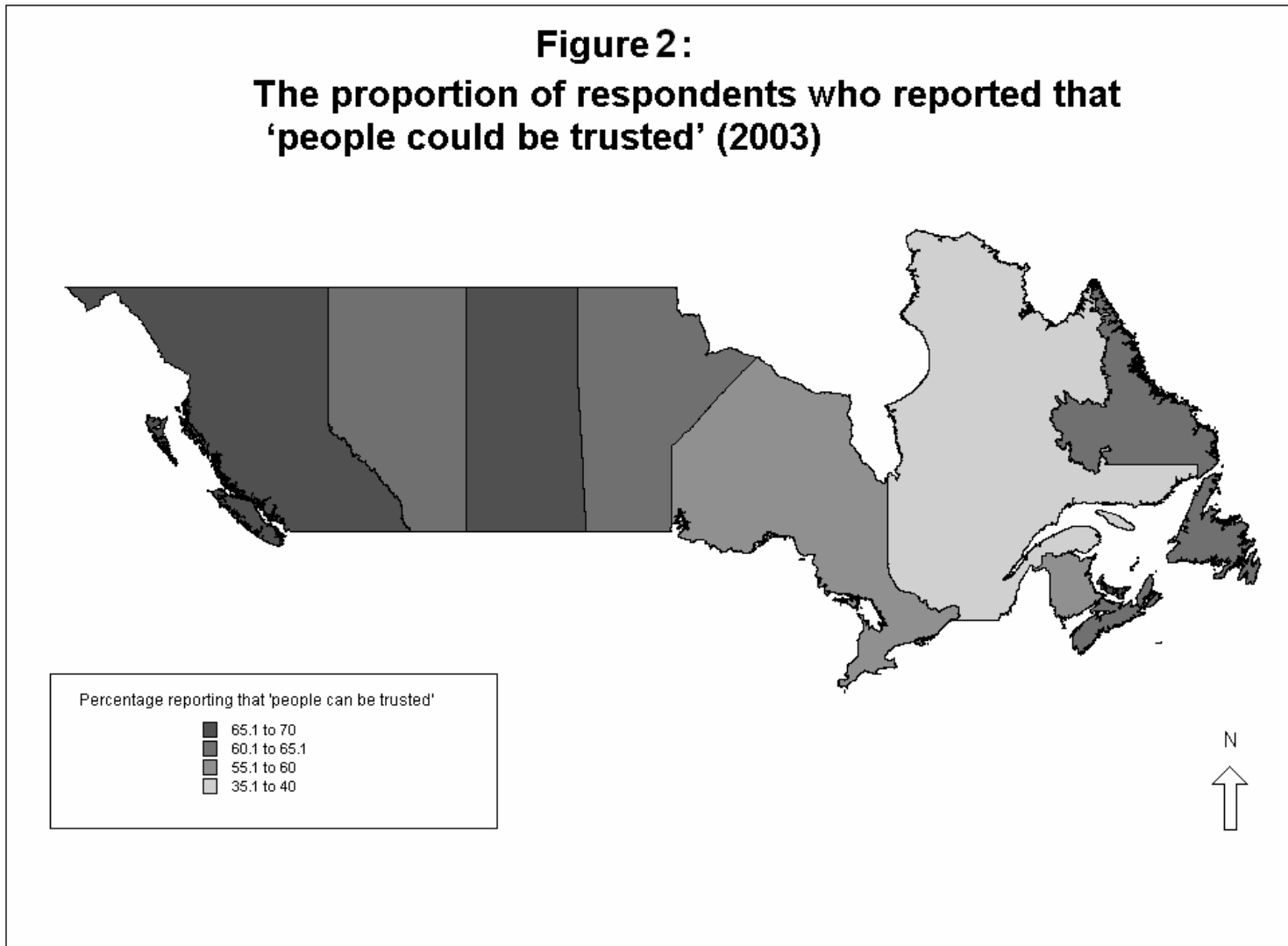
**Figure 1**

**The Conceptual Framework of the Study:  
Determinants of Trust at City Level**

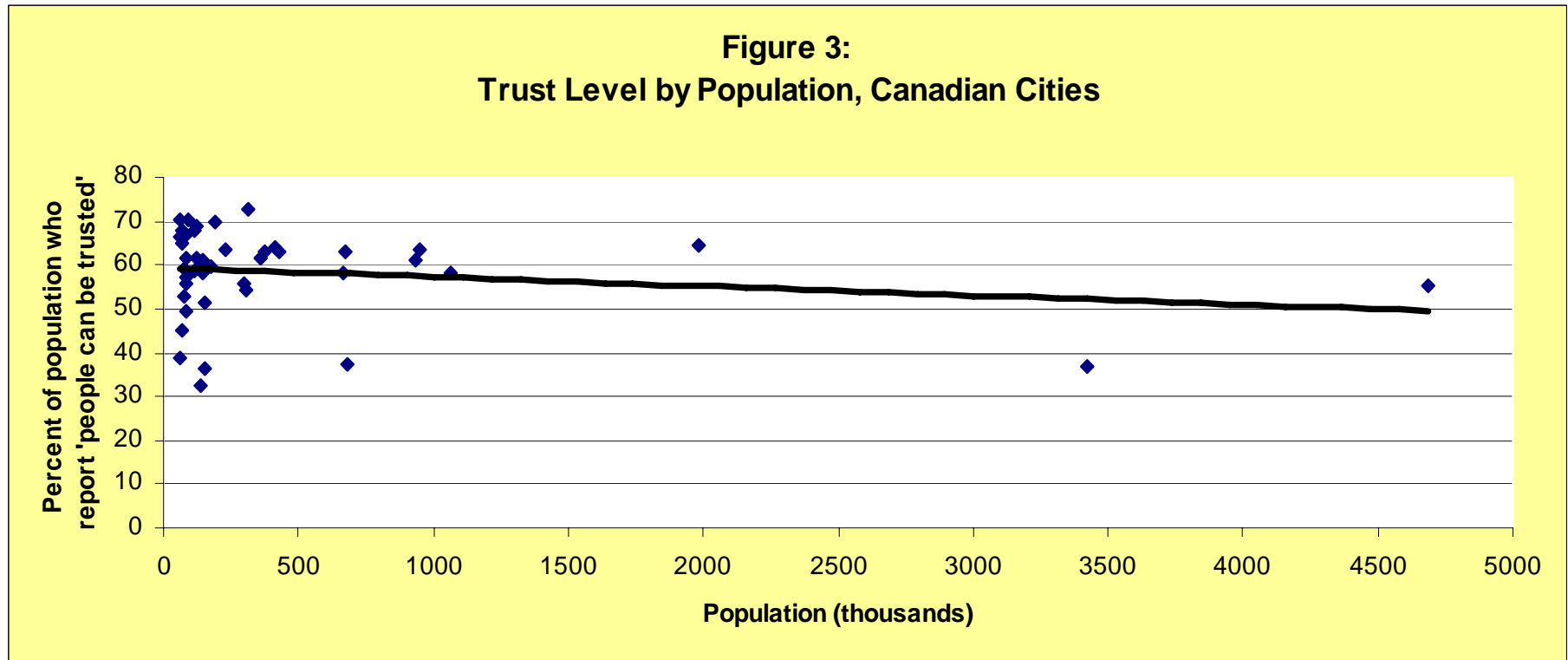


# Trust level, by province, 2003

**Figure 2:**  
The proportion of respondents who reported that  
'people could be trusted' (2003)

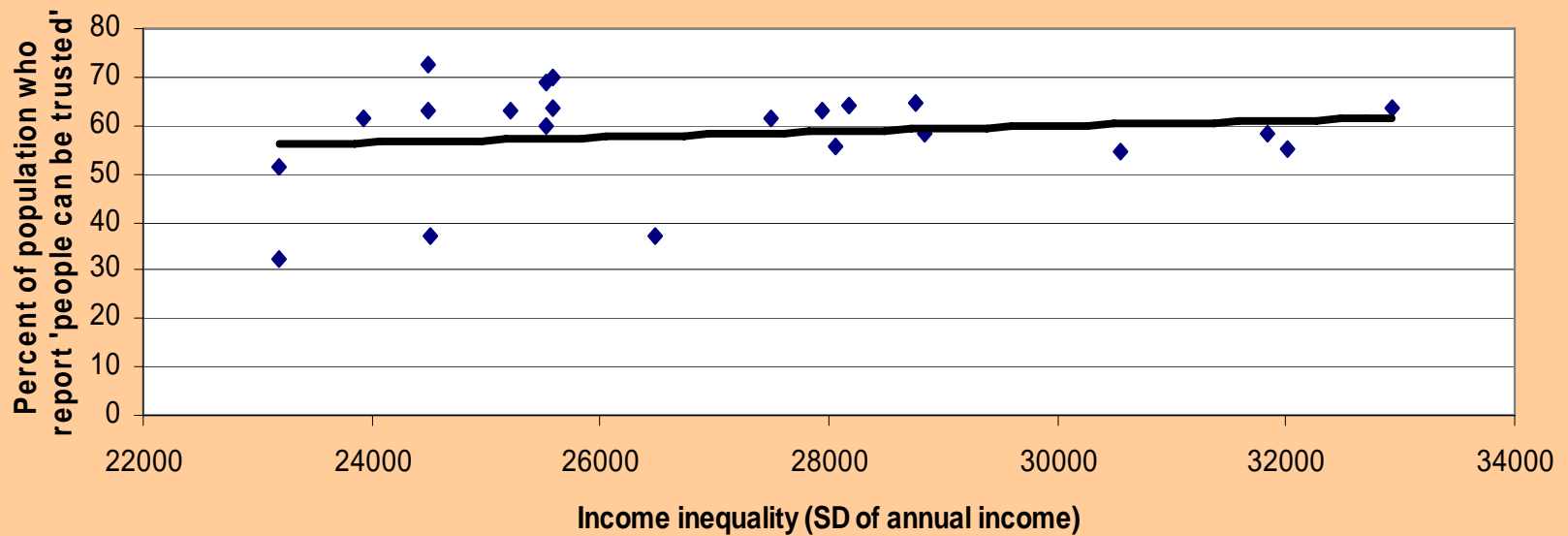


# Trust level and Population, Income, Inequality, Immigrants



# Trust level and Population, Income, Inequality, Immigrants

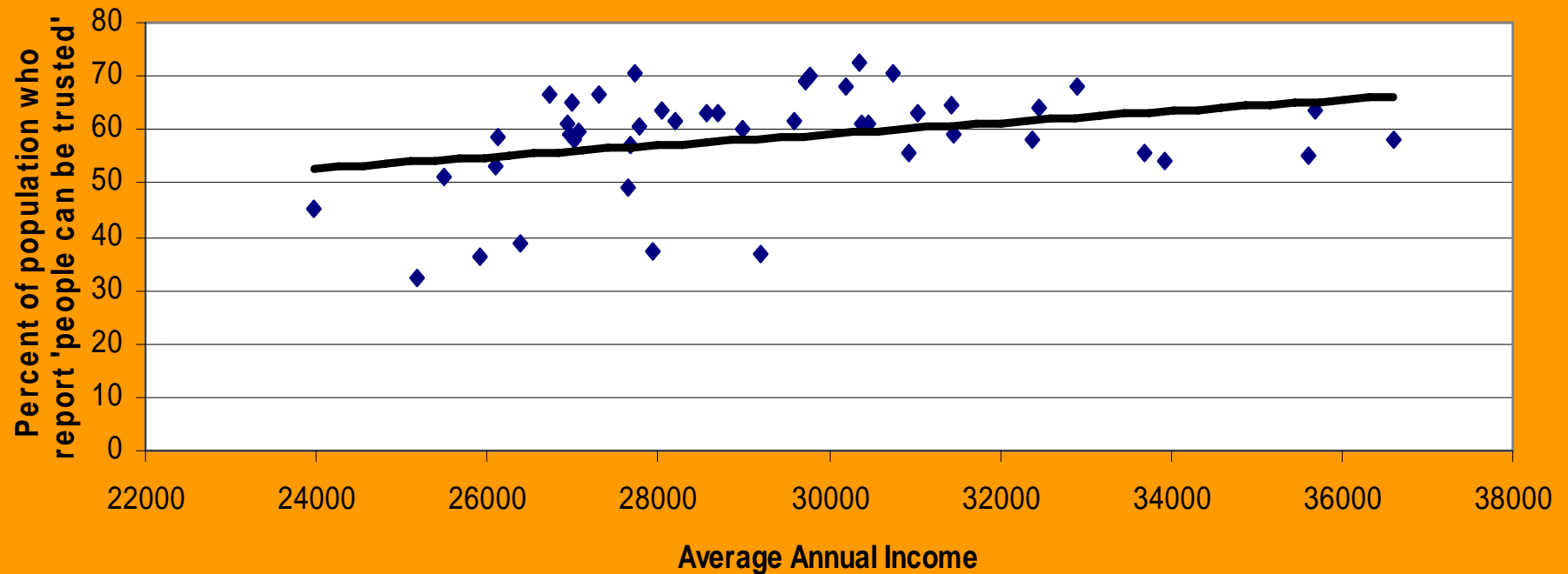
Figure 4:  
Trust Level by income inequality, Canadian Cities (only CMAs)\*



\* The data on income were available only for CMAs and not for smaller cities

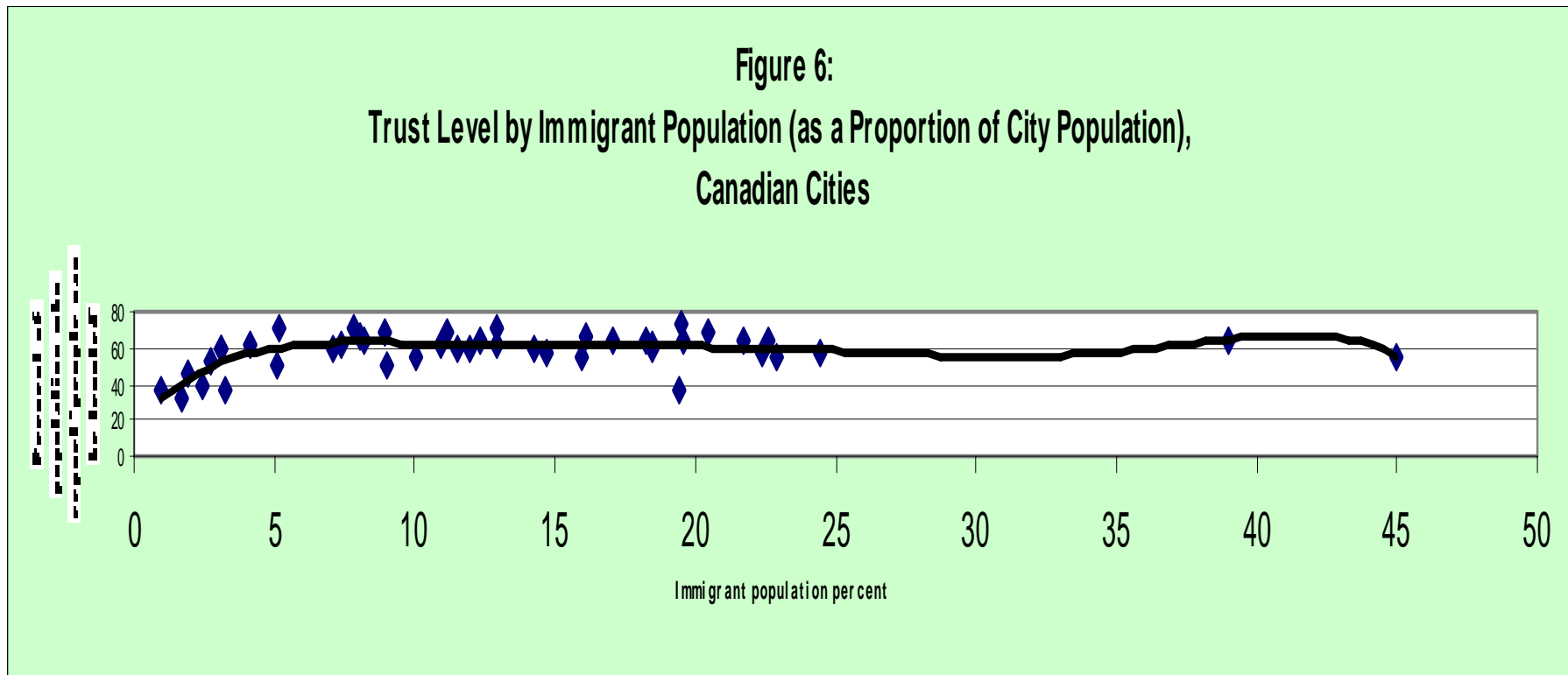
# Trust level and Population, Income, Inequality, Immigrants

**Figure 5:  
Trust Level by Average Income, Canadian Cities (only CMA's)\***



\* The data on income were available only for CMA's and not for smaller cities

# Trust level and Population, Income, Inequality, Immigrants

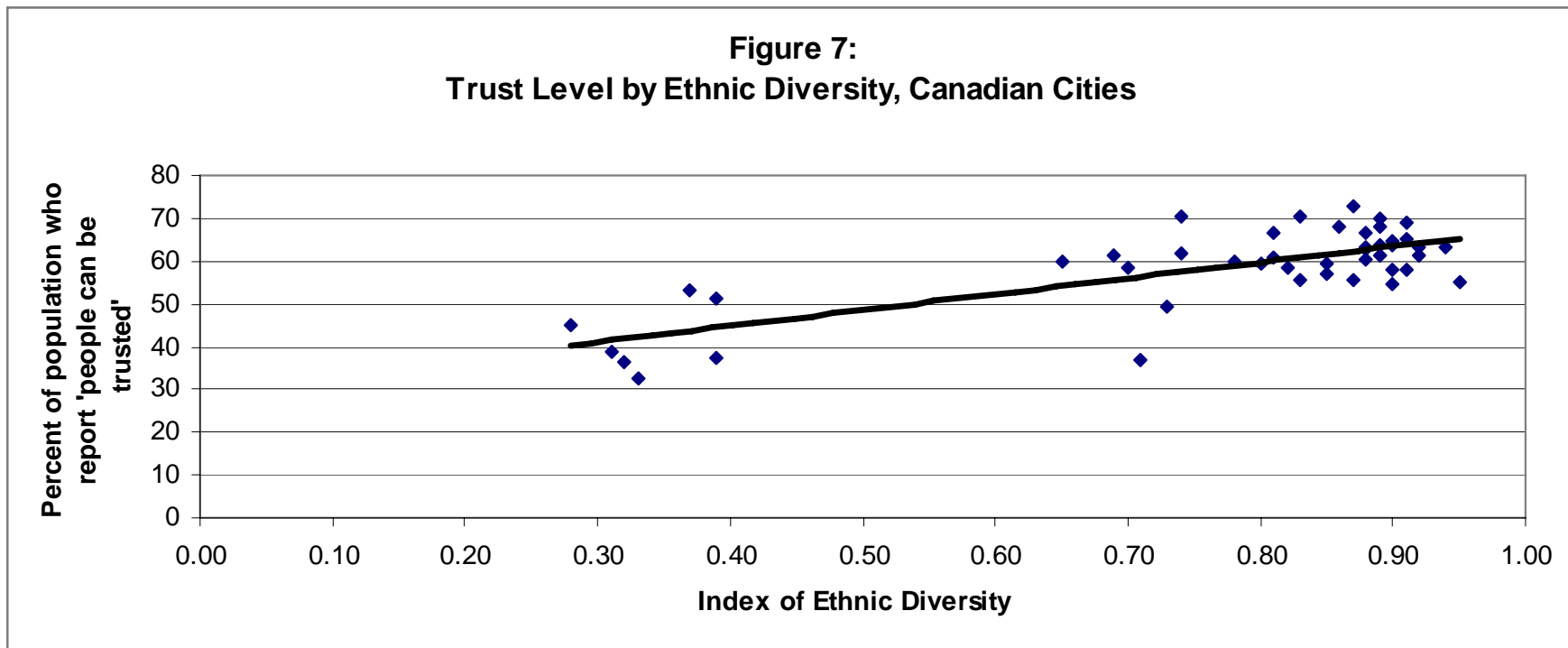


# Trust level and ethnic diversity: Measure of Ethnic Diversity

Canadian	Romanian
English	Belgian
French	Finnish
Scottish	Swiss
Irish	Korean
German	Québécois
Italian	African (Black), n.i.e.
Chinese	Croatian
Ukrainian	Iranian
North American Indian	Japanese
Dutch (Netherlands)	Haitian
Polish	Czech
East Indian	Icelandic
Norwegian	Pakistani
Portuguese	Arab, n.i.e.
Welsh	Acadian
Jewish	Yugoslav, n.i.e.
Russian	Sri Lankan
Filipino	West Indian
Metis	Inuit
Swedish	Serbian
Hungarian (Magyar)	Black
American (USA)	Guyanese
Greek	Slovak
Spanish	Trinidadian/Tobagonian
Jamaican	South Asian, n.i.e.
Danish	Punjabi
Vietnamese	Latin/Central/South American, n.i.e.
British, n.i.e.	Egyptian
Austrian	Armenian
Lebanese	

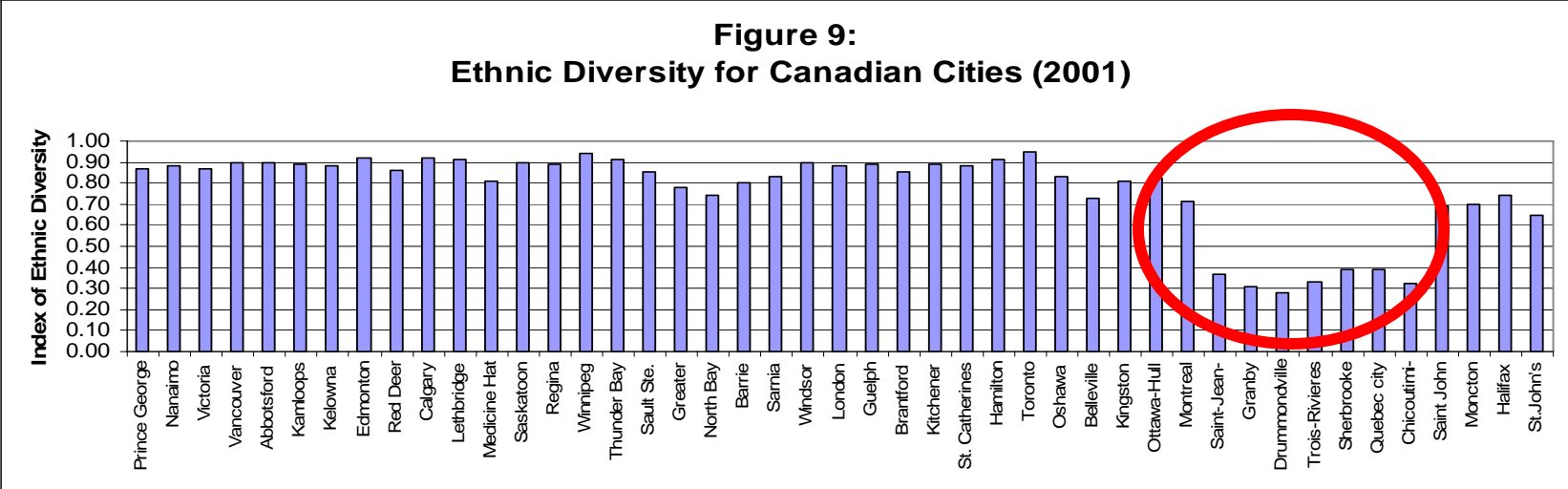
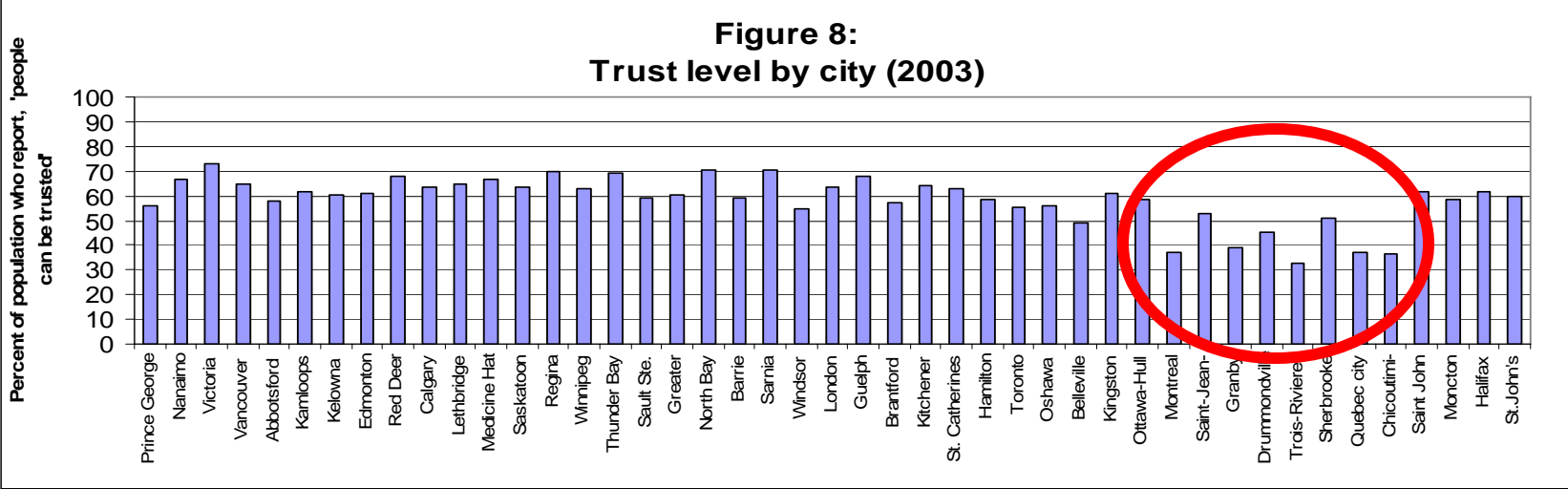
$$IQV = \frac{\sum f_i f_j}{\frac{K(K-1)}{2} \left(\frac{N}{K}\right)^2}$$

# A Canadian anomaly: a positive relationship between trust and ethnic diversity

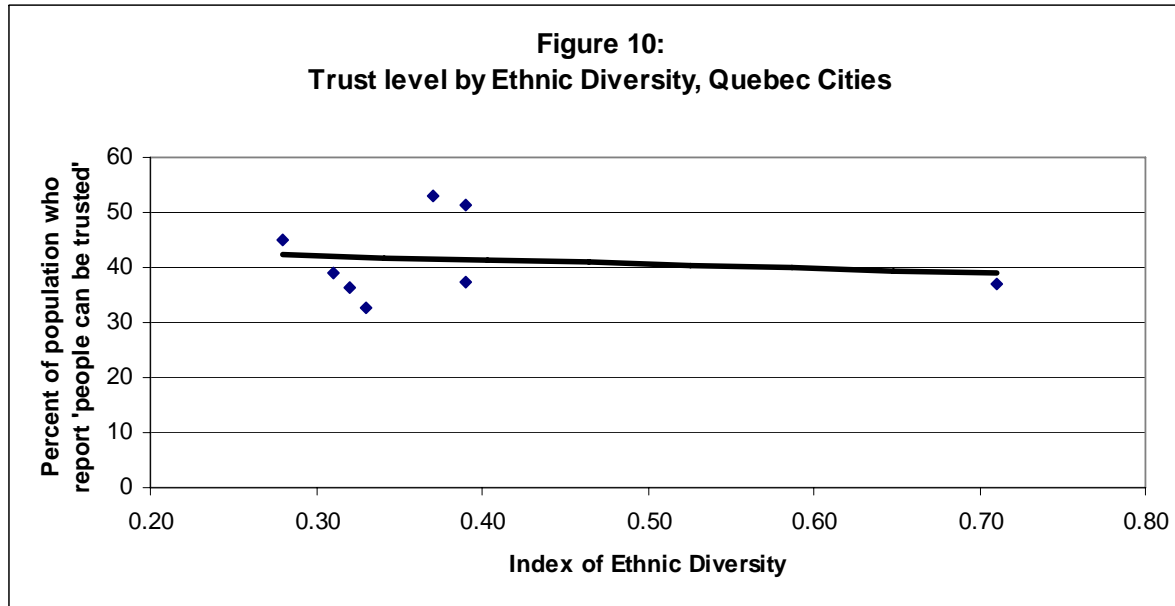


	Direction	Pearson Correlation	Sig
Canada	+	0.75	0.00

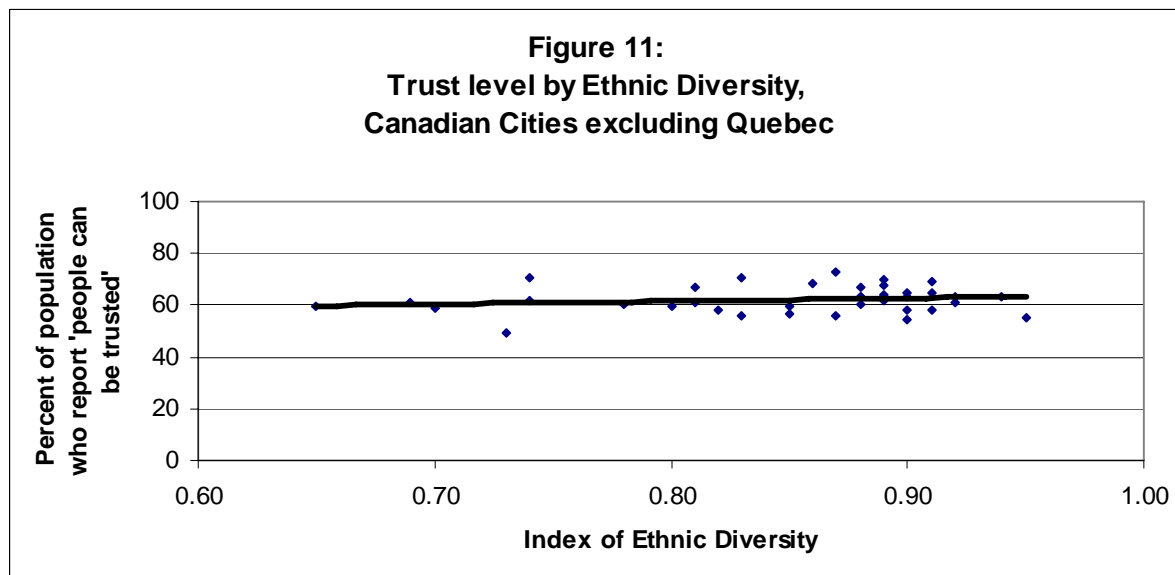
# A Quebec anomaly: low trust, low diversity



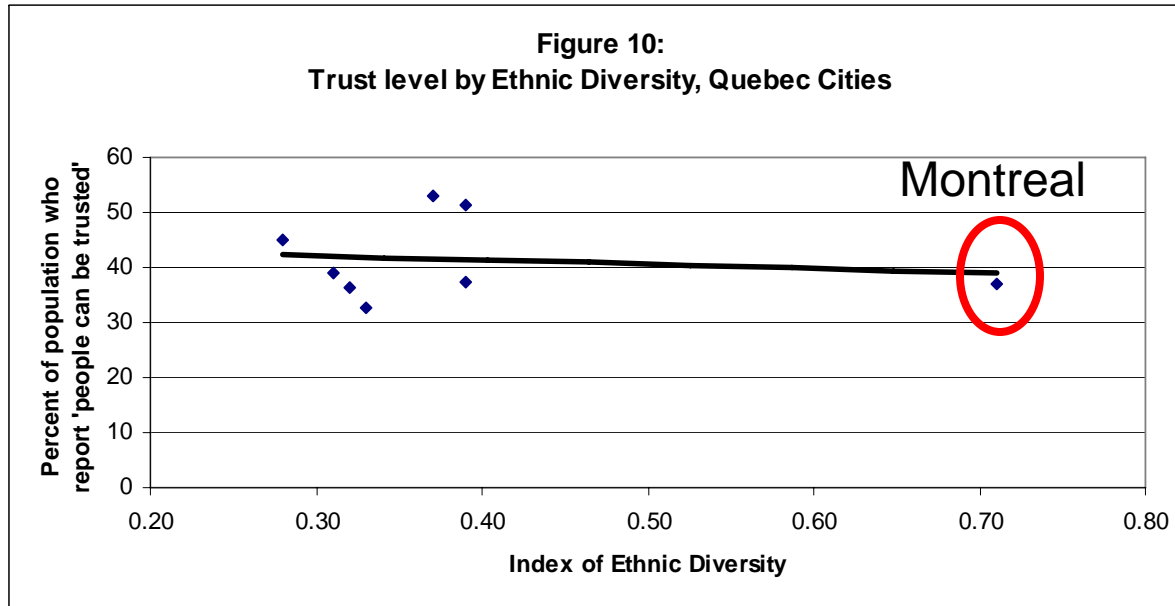
# A Quebec anomaly: a negative relationship between trust and ethnic diversity



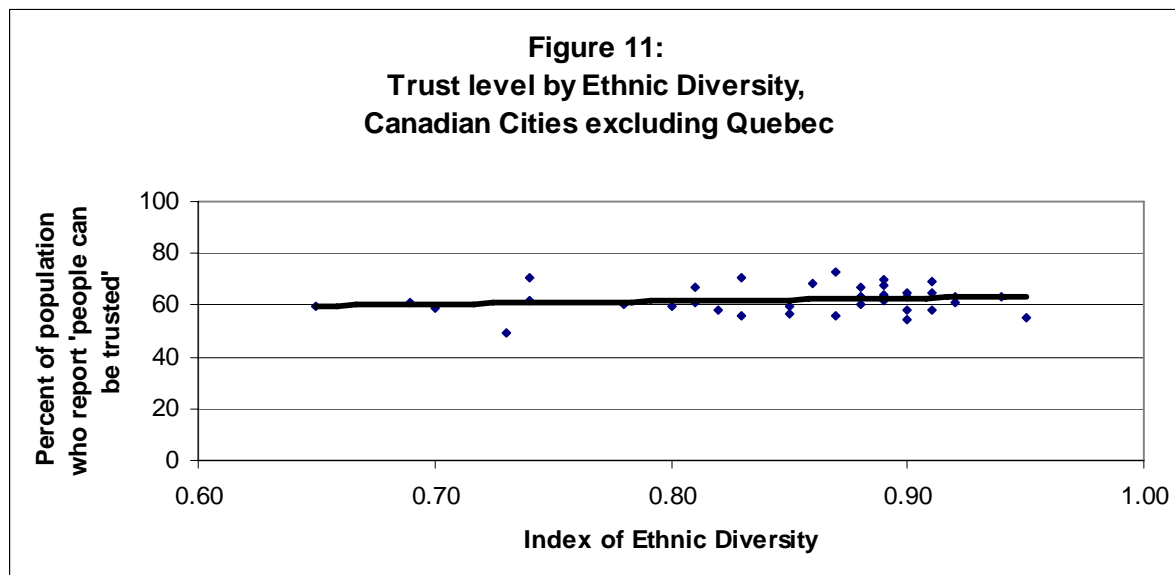
	Direction	Pearson Correlation	Sig
Canada minus Quebec	+	0.17	0.33
Quebec Only	-	-0.13	0.75



# A Montreal anomaly: low trust and high ethnic diversity

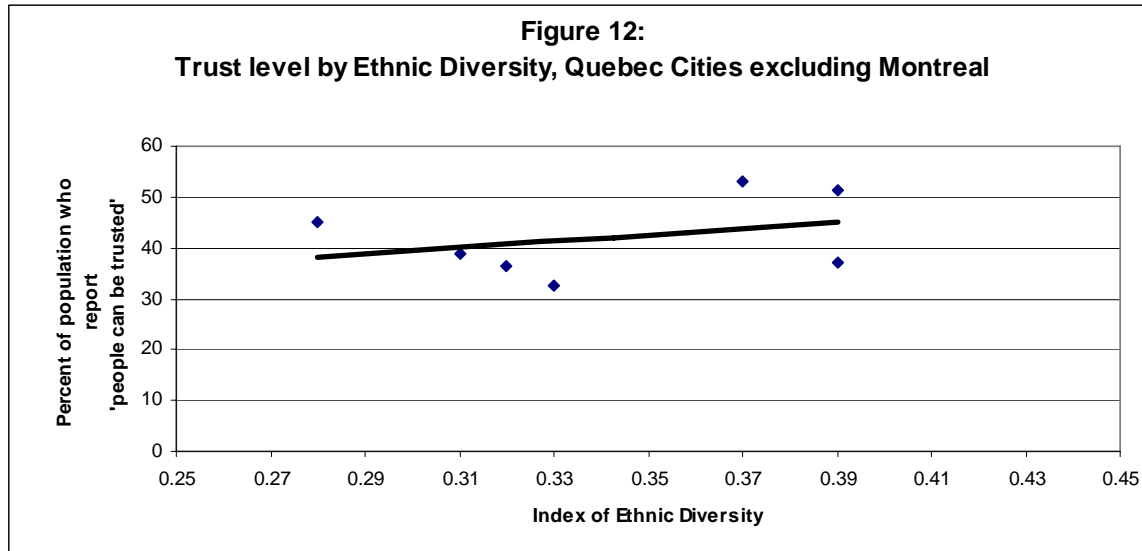


	Direction	Pearson Correlation	Sig
Canada minus Quebec	+	0.17	0.33
Quebec Only	-	-0.13	0.75

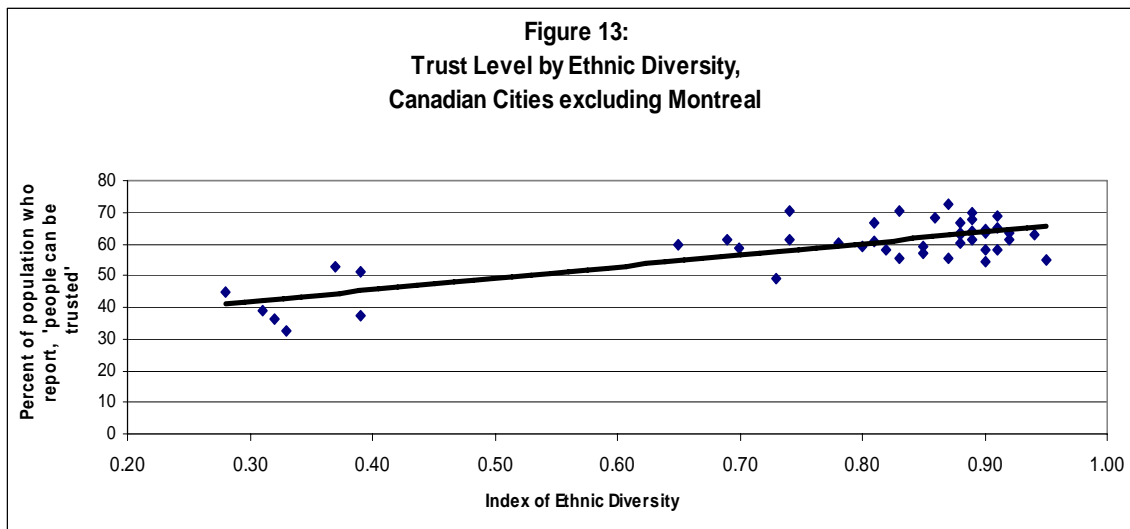


# After Montreal is taken out:

similar positive relationship between ethnic diversity and trust in both Quebec and the rest of Canada



	Direction	Pearson Correlation	Sig
Quebec minus Montreal	+	0.34	0.46
Canada minus Montreal	+	0.79	0.00



A Canadian anomaly?  
 A Quebec anomaly?  
 A Montreal anomaly?

<b>Table 1. Effect of Ethnic Diversity on Trust (Single Response)</b>			
	Direction	Pearson Correlation	Sig
Canada	+	0.75	0.00
Canada minus Quebec	+	0.17	0.33
Quebec Only	-	-0.13	0.75
Quebec minus Montreal	+	0.34	0.46
Canada minus Montreal	+	0.79	0.00

# Why do trust and diversity positively correlate?

- A greater exposure of Canadians to 'others'?
- The success of Multiculturalism?

# policy/research implications

- More data are needed on more cities
- Larger samples are needed from smaller cities
- The unusually low levels of trust in Quebec cities warrants a closer examination
- The unusual combination of low trust and high diversity in Montreal warrants a closer examination
- More refined measures of trust are needed:
  - Experimental measures
  - Whom do people trust (those who are like themselves? those of different races? those of different cultures?)

More details:

A. Kazemipur

**“A Canadian Exceptionalism?  
Diversity and Trust in Canadian Cities”**

(forthcoming)

***Journal of International Migration and Integration***