

NORTHROP ARMY

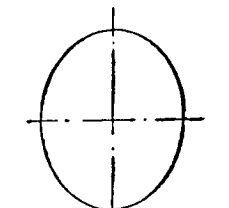
A-17 ATTACK

NOTE: ALL POSITIONS OF THE DETAILS ARE APPROX. NO DATA ON PERFORMANCE HAS BEEN RELEASED BY THE WAR DEPT ON THIS PLANE.

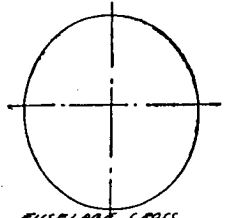
BLACK LETTERING ON BOTTOM OF WING

AUX TOP VIEW

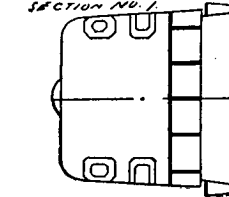
COLOR SCHEME FUSELAGE & LANDING GEAR NEW ARMY BLUE WING & TAIL SURFACES ARMY YELLOW ALL DETAILS AS SHOWN IN PLANS



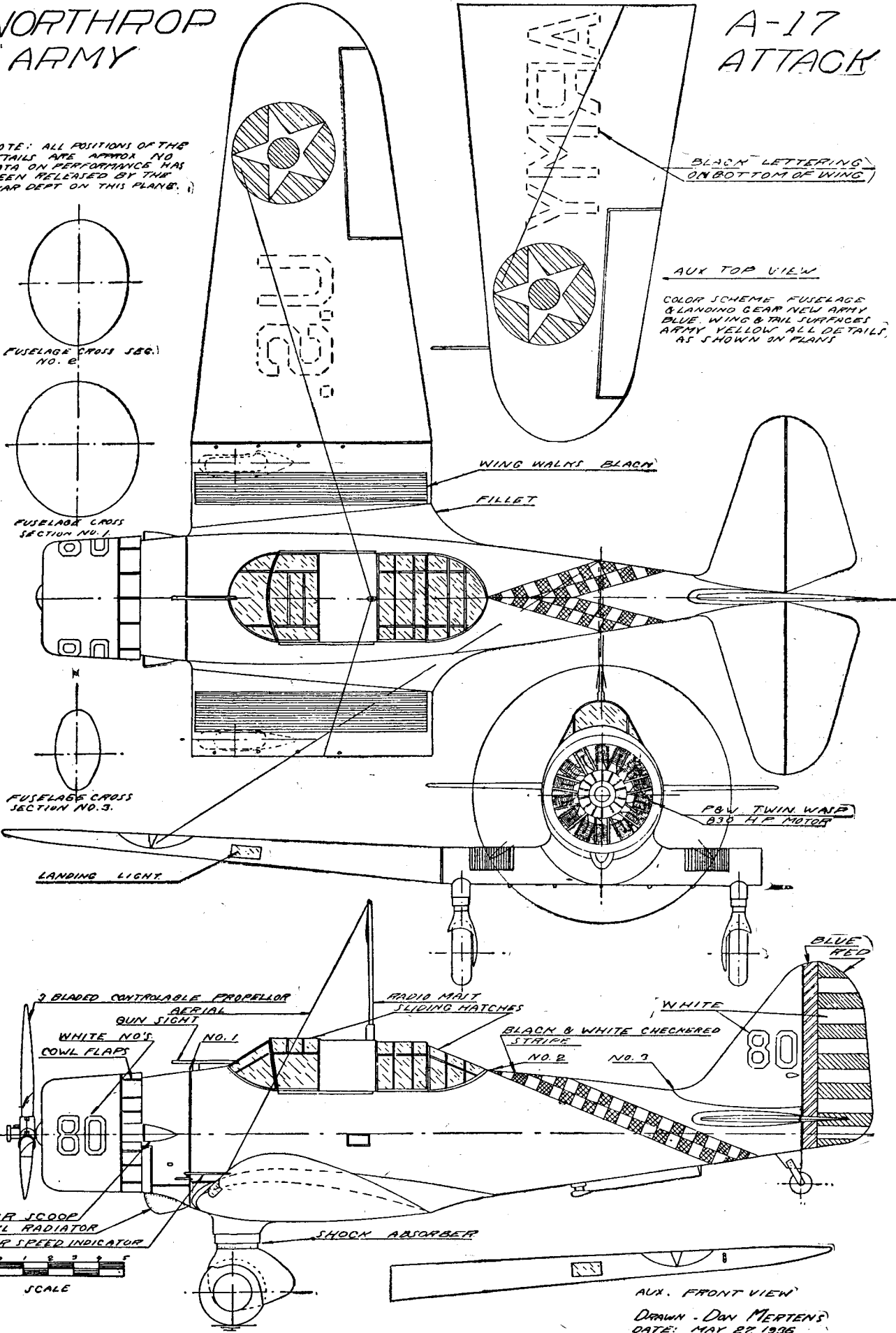
FUSELAGE CROSS SEC. NO. 2



FUSELAGE CROSS SECTION NO. 1



FUSELAGE CROSS SECTION NO. 3



DRAWN - DAN MERTENS
DATE: MAY 27, 1936