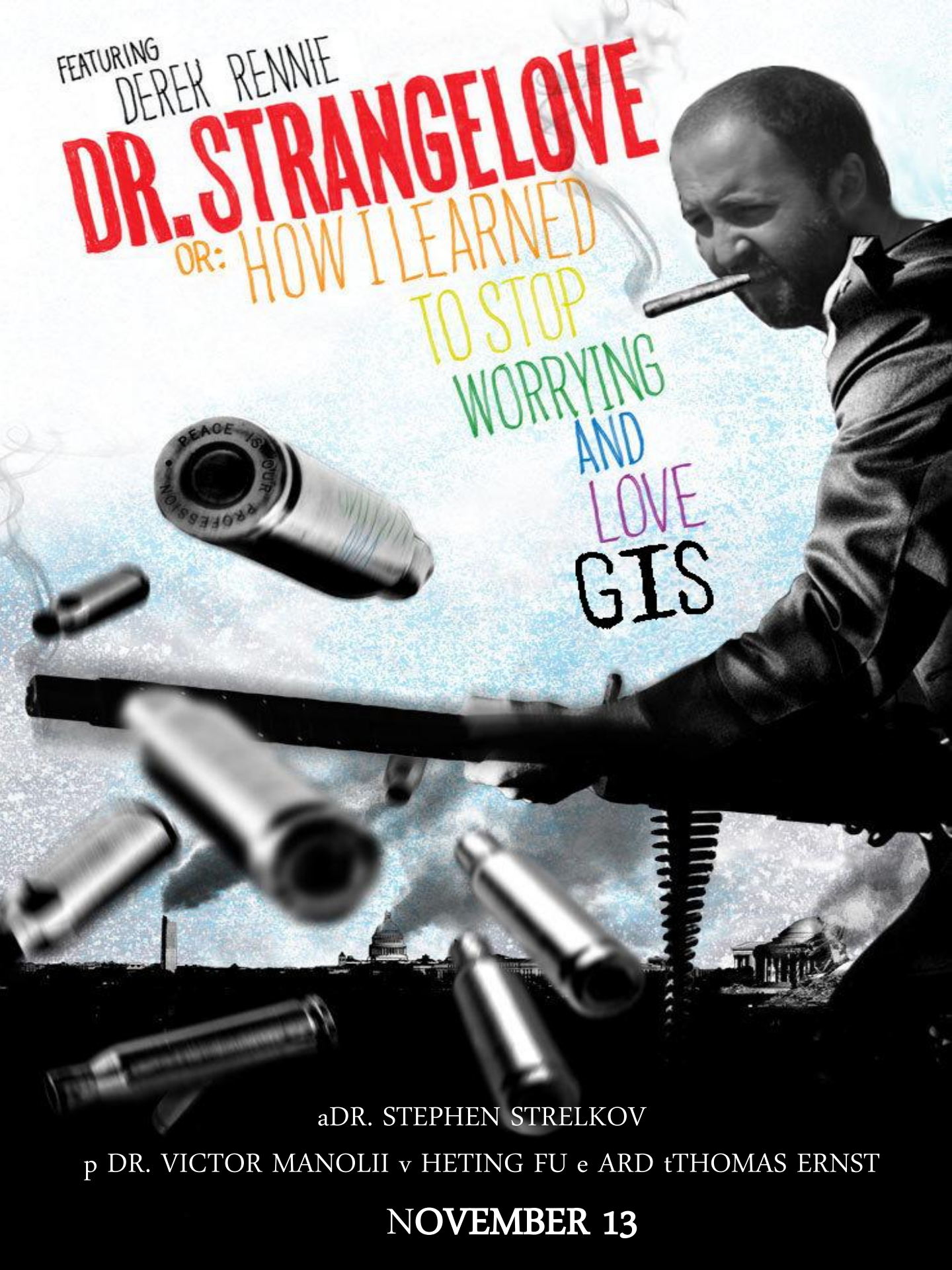


FEATURING
DEREK RENNIE

DR. STRANGELOVE

OR: HOW I LEARNED
TO STOP
WORRYING
AND
LOVE
GIS



aDR. STEPHEN STRELKOV

p DR. VICTOR MANOLII v HETING FU e ARD tTHOMAS ERNST

NOVEMBER 13

PROJECTS

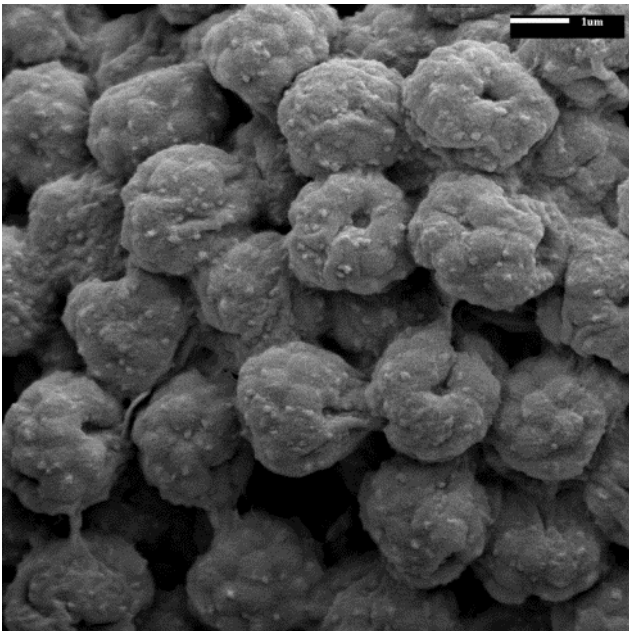
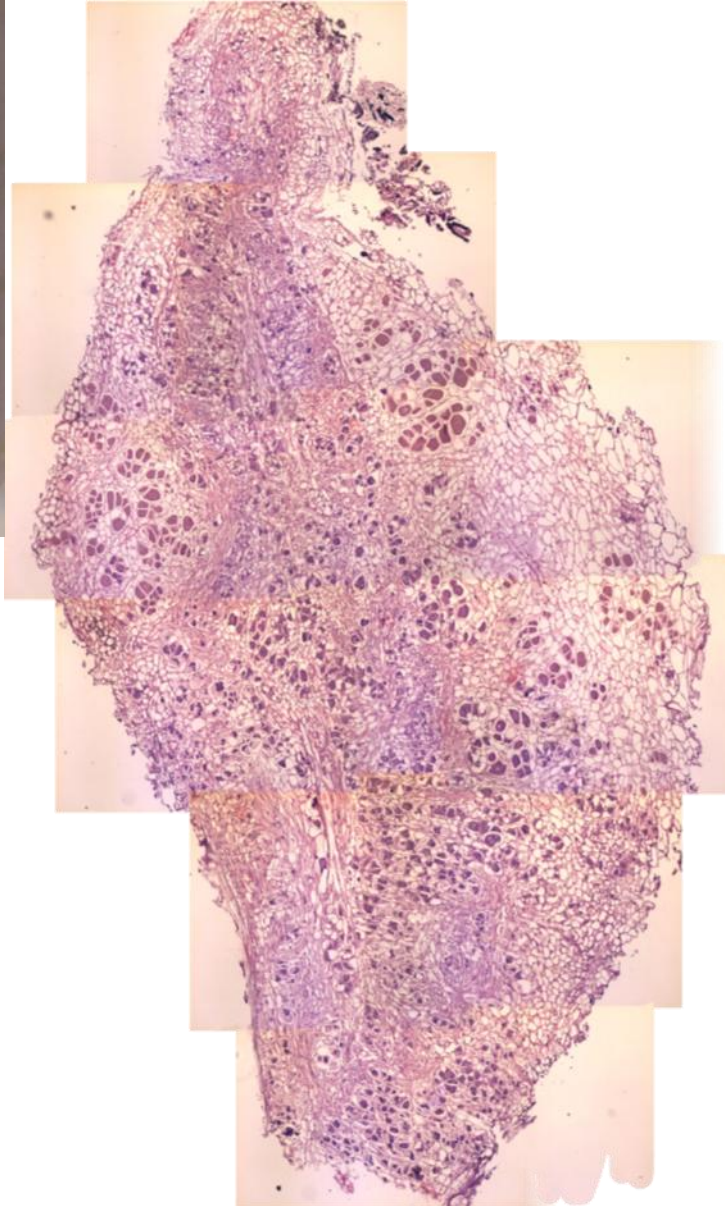
- Tan Spot of Wheat
- White Mold of Canola
- Net Blotch of Barley
- Blackleg of Canola
- Downy Mildew of Pea

And...

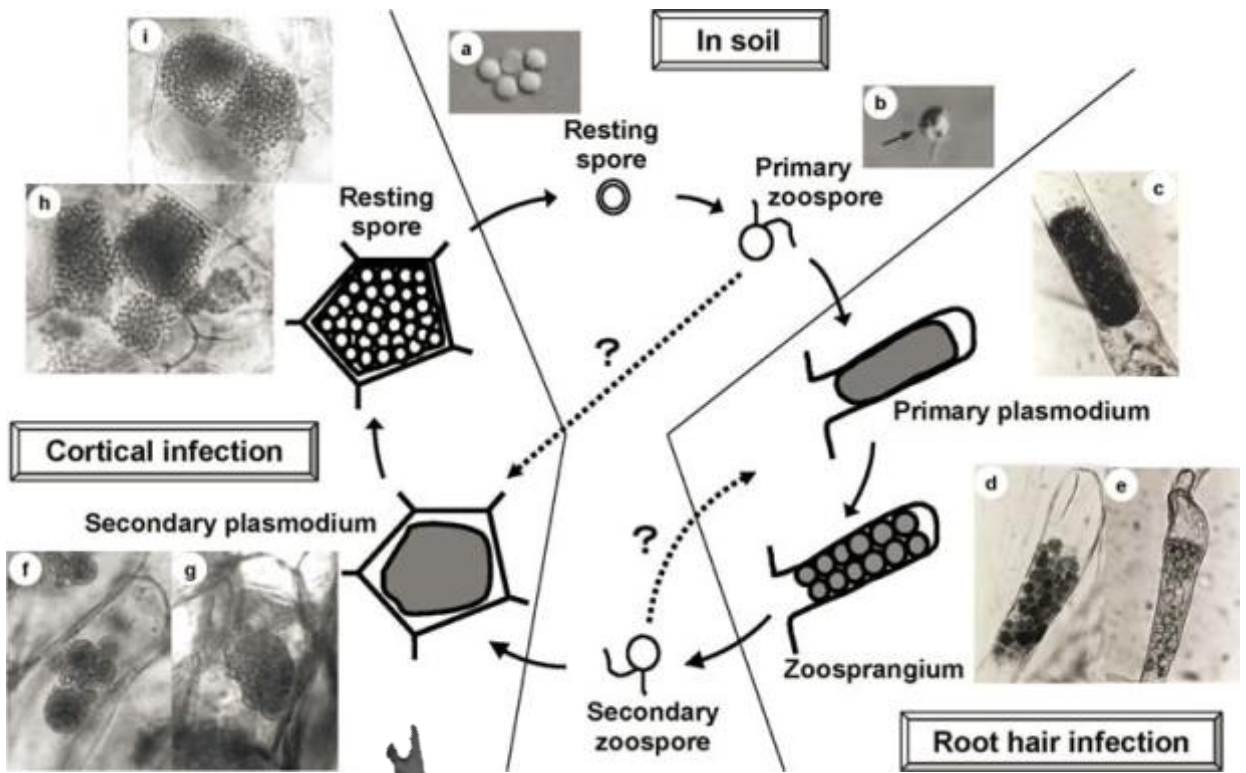


(Kubrick, 1964)

CLUBROOT

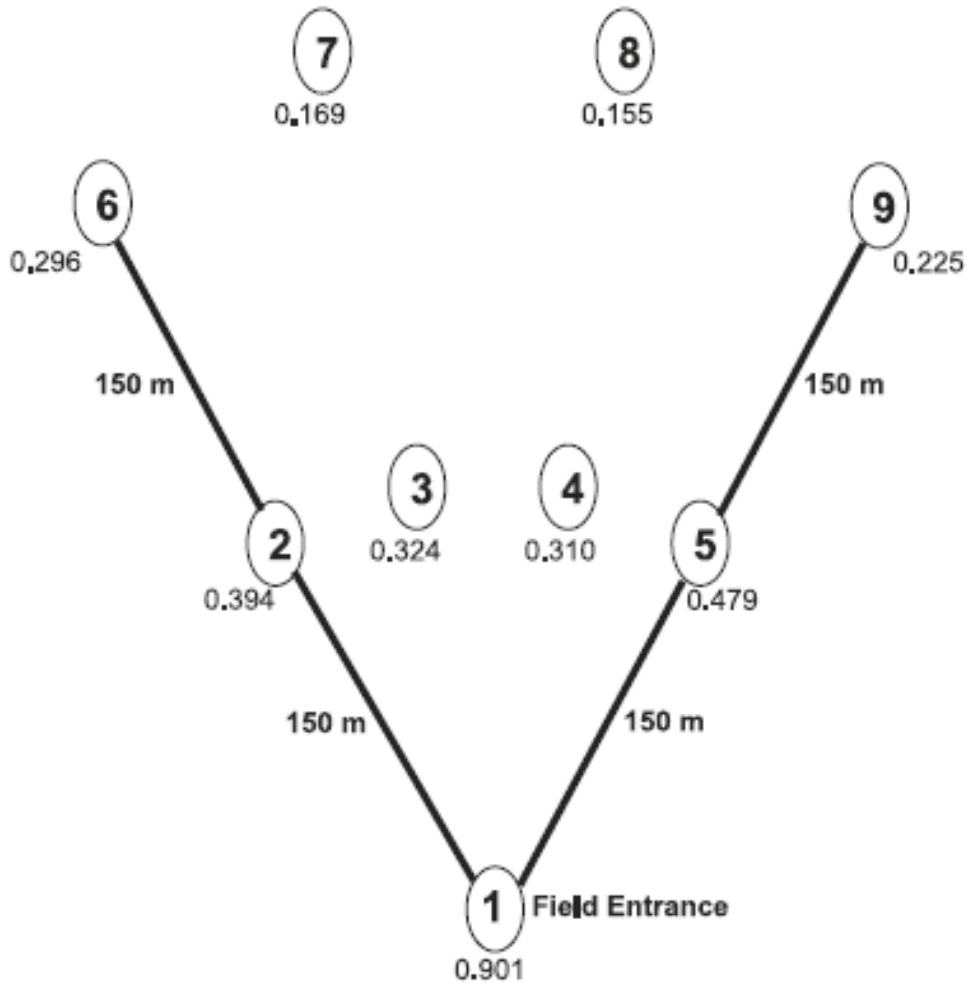


CLUBROOT



(Kageyama and Asano, 2009; Kubrick, 1964)

CLUBROOT IN FIELDS



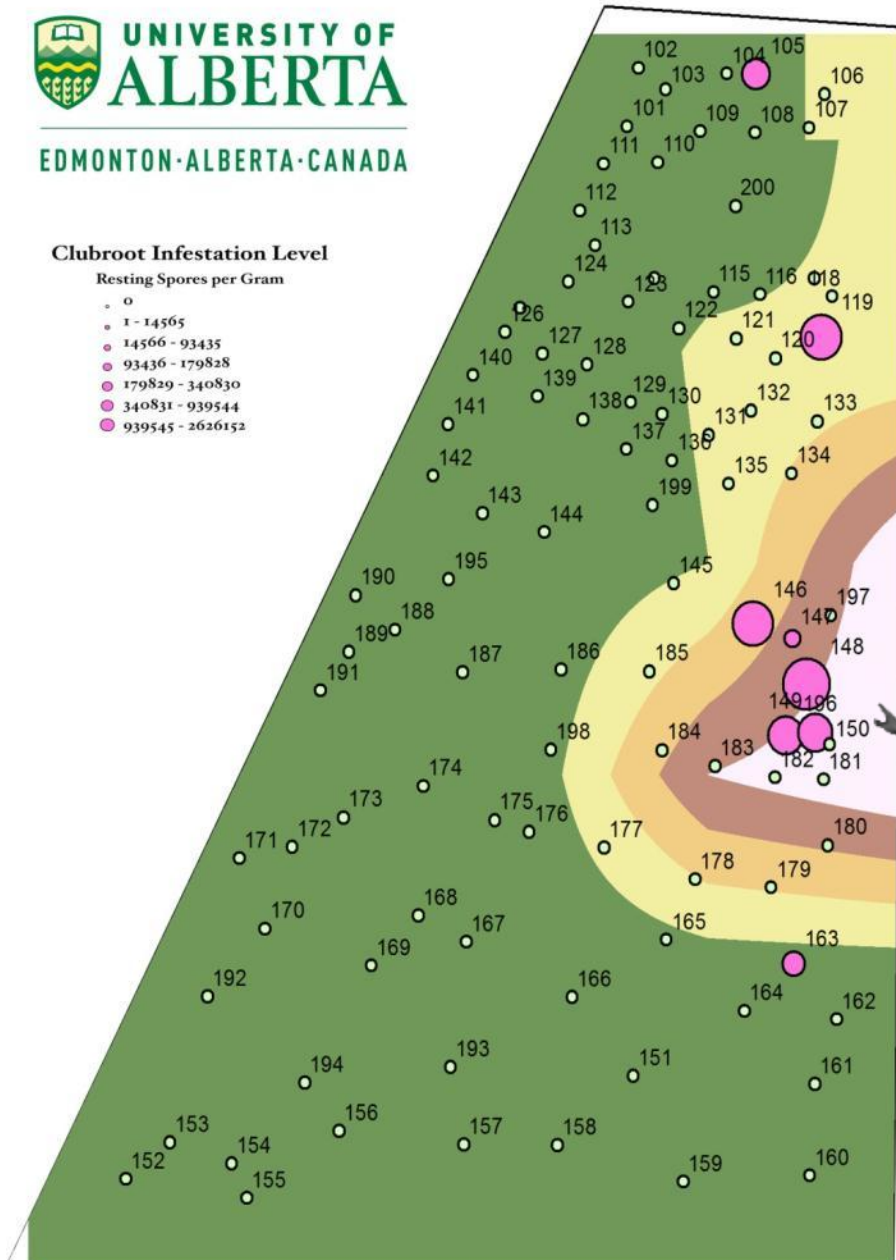
CLUBROOT IN FIELDS



Clubroot Infestation Level

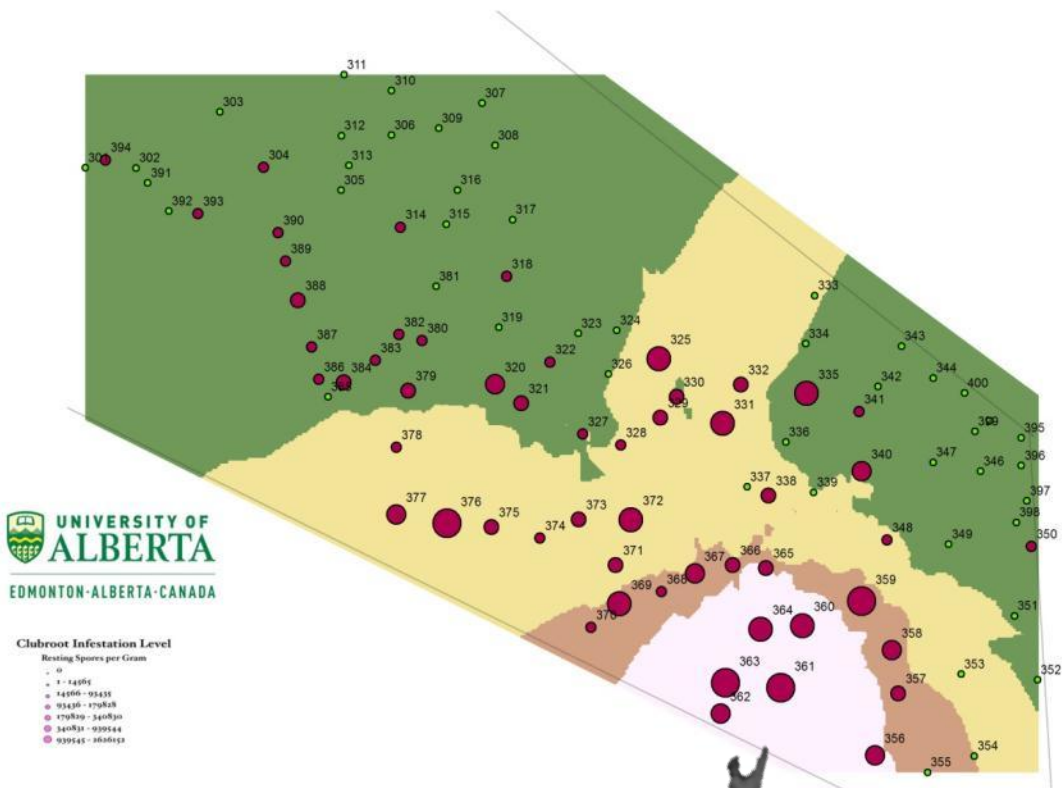
Resting Spores per Gram

- 0
- 1 - 14565
- 14566 - 93435
- 93436 - 179828
- 179829 - 340830
- 340831 - 939544
- 939545 - 2626152



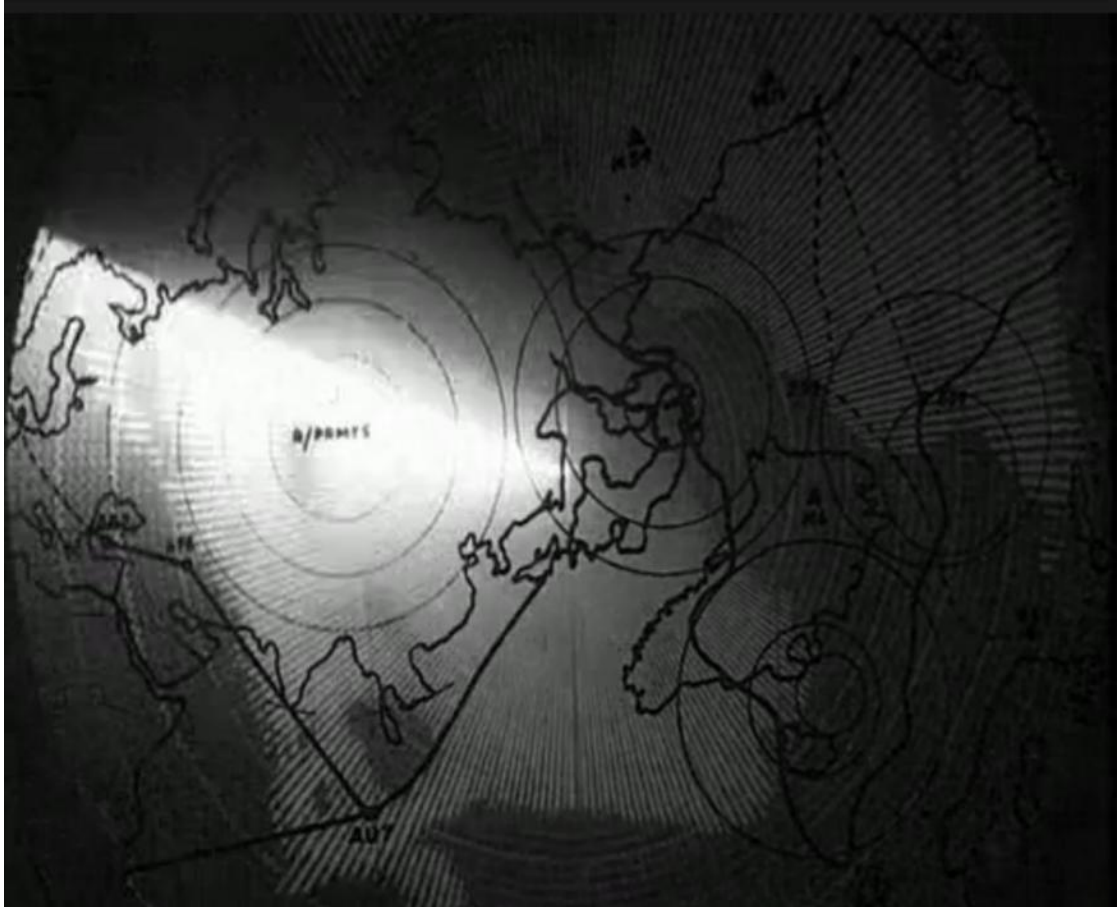
(Kubrick, 1964)

CLUBROOT IN FIELDS



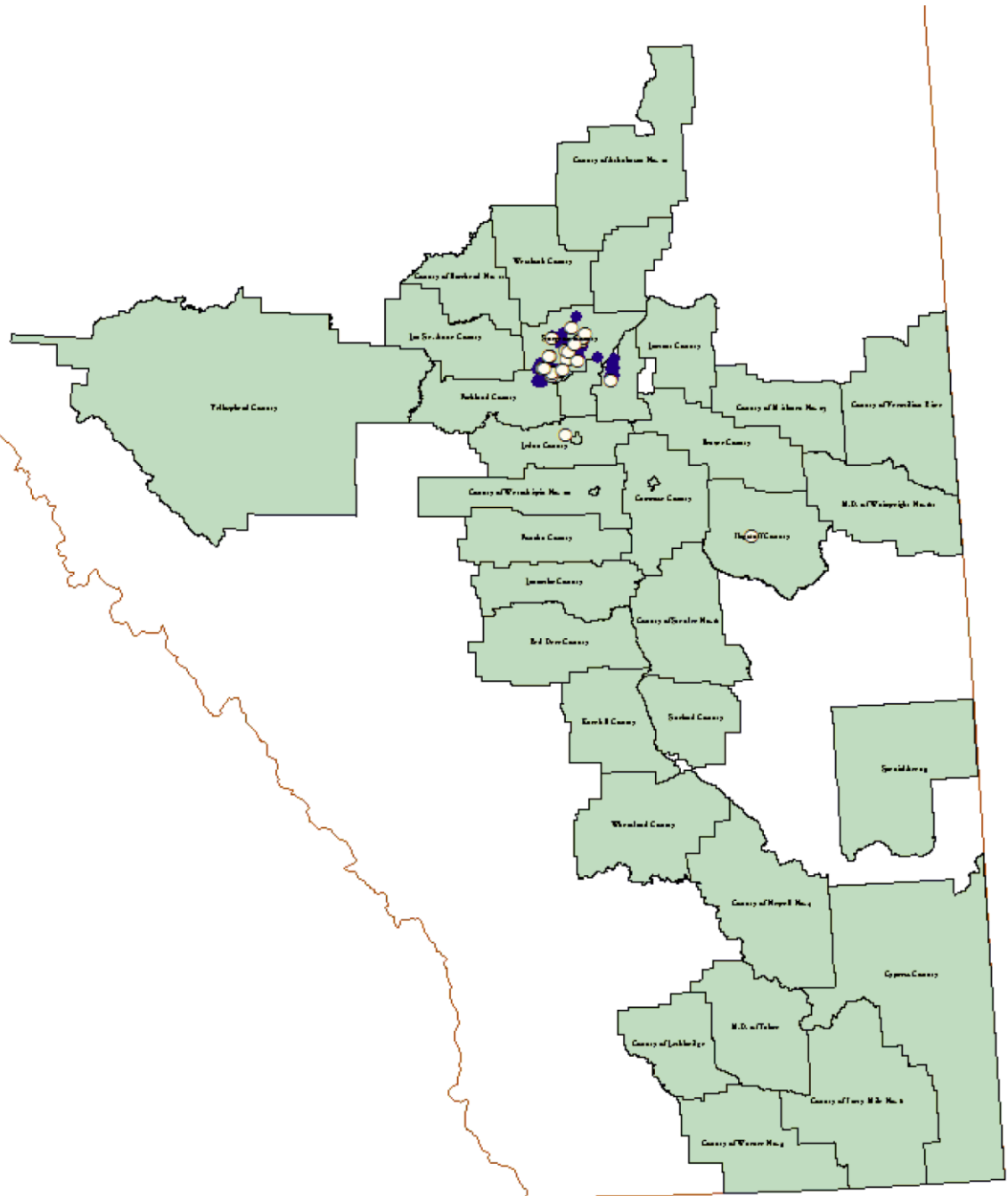
(Kubrick, 1964)

SURVEILLANCE

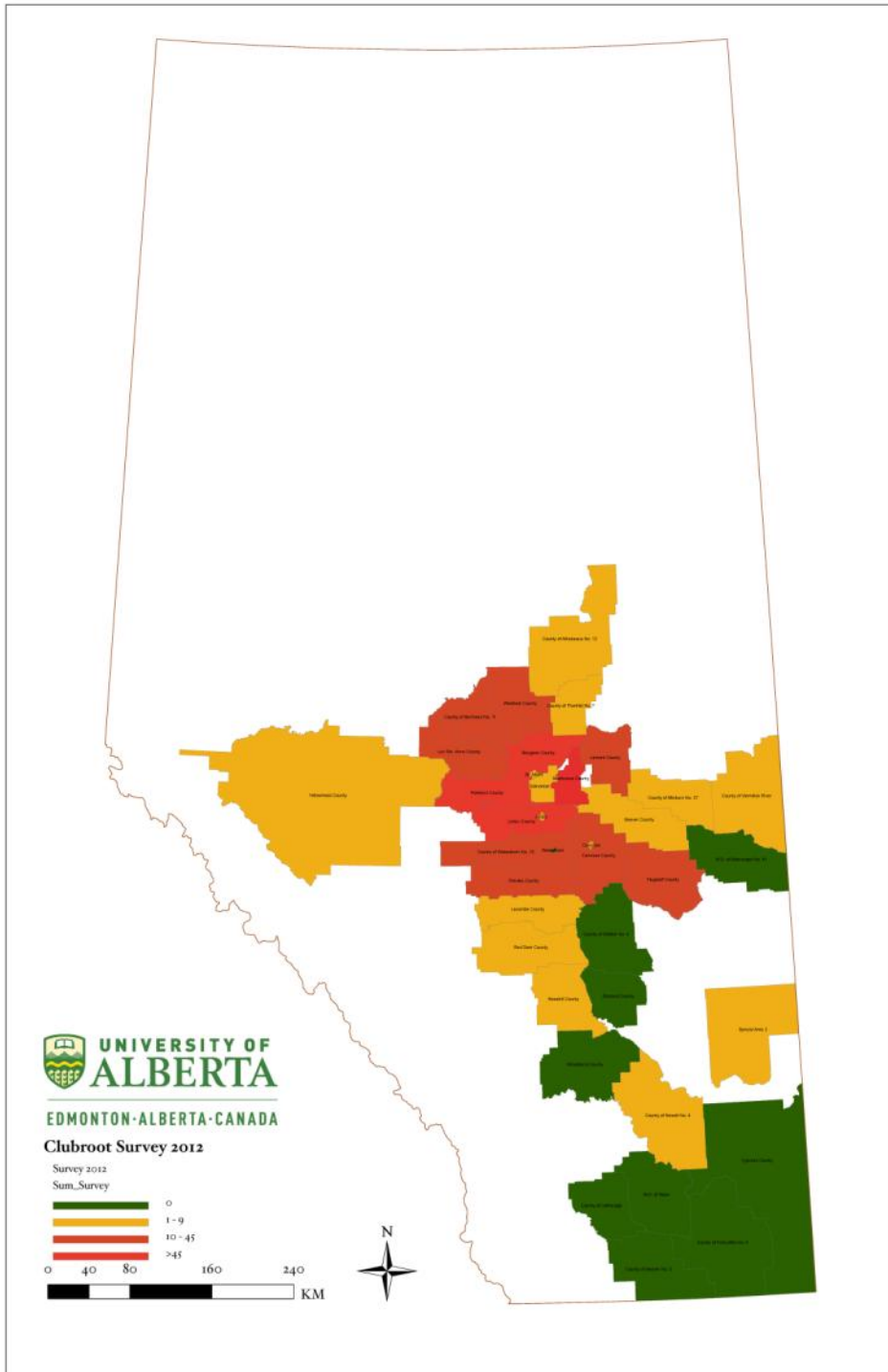


(Kubrick, 1964)

CLUBROOT IN ALBERTA



CLUBROOT IN ALBERTA



DATA COLLECTION

- Data collected either on:
 - Juniper Archer Field Computer
 - Field Laptop with GPS antenna

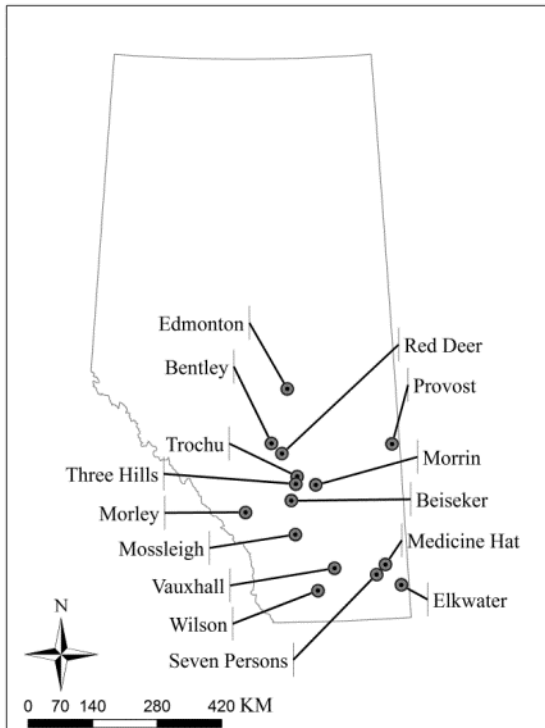


(Kubrick, 1964)

DATA MANAGEMENT

- Physical maps and spreadsheet recordkeeping
- Now managed in ArcGIS
 - Data now query-able
 - Maintained in context
 - Standardized and accessible
 - More trips to the data library

OTHER USES



OTHER USES



OUTLOOK

- Continued use during clubroot surveillance— adapt for other disease surveillance
- Spatial relationships between geographic features and disease
- New perspective on spatial data

ACKNOWLEDGMENTS

- Dr. Stephen Strelkov and the plant pathology lab
- Agriculture and Rural Development



Canada 

