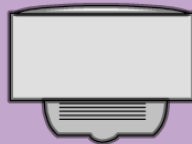
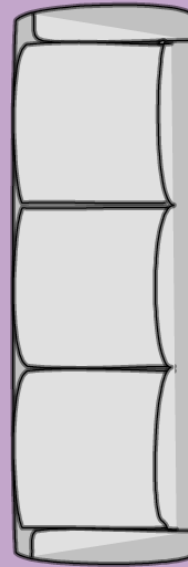


Student Lounge Project



Let's say Mr. McKinnon has allowed the students at MCI to create a student lounge in this very classroom. You have been asked to submit proposals to the student council regarding the plan for the room. The best proposal will win a prize. Your budget is \$10,000. Good luck!



Step 1: First Sketch

Your first step is to prepare a scale drawing of the classroom, empty. Take measurements of the classroom, windows, doors, etc. Then create a sketch of the room using an appropriate scale. Assume that everything inside the room (white boards, cupboards, shelves, etc.) will be removed. This should be four walls, one door and two windows. You should create drawings of the floor plan as well as drawings of each of the four walls. You will need these later.

What I will be looking for:

- An appropriate scale used consistently
- Drawings of 4 walls and floor plan (including windows and door)
- All dimensions labelled on drawings
- Area of windows and door calculated
- Area of walls calculated for paint
- Area of floor calculated for flooring

Step 2: Second Sketch

Your next step is to redesign the space as a student lounge. You may not alter the size of the room or the location of the door or windows. Anything else goes. Walls, doors, etc. may be added. Furniture, flooring, paint, electronics, and decorative touches are a must. You will need to keep track of your purchases (price and dimensions) and work on the second sketch and cost analysis together. Pictures should be kept for the presentation to come.

What I will be looking for:

- neat, legible, ruler used, appropriate scale used
- Floor plan includes new walls, windows, doors etc. added
- Drawings and areas of new walls to be added are included
- Dimensions and area given for all types of flooring, furniture, and window coverings.
- All items are drawn in using appropriate scale

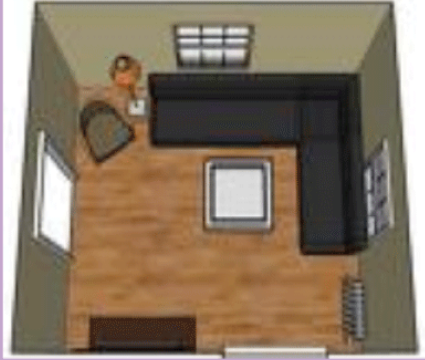
Step 3: Cost Analysis

While you complete the second sketch and your plan, prepare a cost analysis outlining the cost of your paint, flooring, furniture, decoration, electronics, etc. Remember your budget is \$10,000 (including tax). Your cost analysis can be done on a spreadsheet or hand written. Be sure to total the final cost with taxes.

What I will be looking for:

- Organized and attractive in appearance
- Meets \$10,000 budget
- Paint and flooring calculated correctly, work shown
- Furniture, decorations, electronics included and itemized
- Total calculated with taxes

Step 4: 3D Model



The fourth step is to create a 3 dimensional model of your plan for presentation to the class. You must scale the model, although you may want to choose a different scale than the one you used for the sketches. Every piece of the model should be to scale if I measure it. The floor, window, wall, door, and furniture dimensions will all be to scale. Use any materials that you have available to you. This model will be presented as part of your presentation and then checked by your teacher.

Step 5: Presentation

The final part of this project will have you present your design to the class. We will judge the best design based on your presentation.

In your presentation, you should highlight the features of your design using the 3D model. Also, indicate the cost of the renovation.

Use good presentation skills as a good presentation will be reflected in your mark.

Good luck!