

G2 Application Note for Communication Testing with 2 XBee S1 Modules Using the New XCTU on Mac OSX Part 3/3

Introduction:

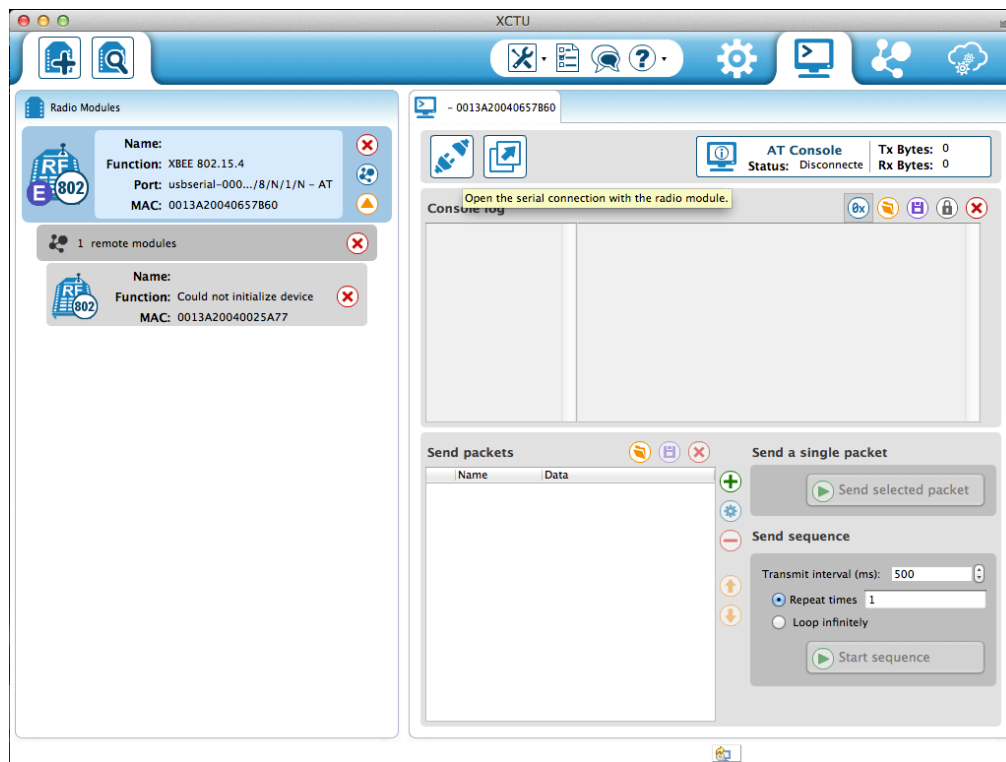
This tutorial demonstrates how to use the new XCTU interface with the XBee S1 modules. The tutorial covers how to test the communication between 2 XBee S1 modules using a loopback adapter and sending packets.

Materials Needed:

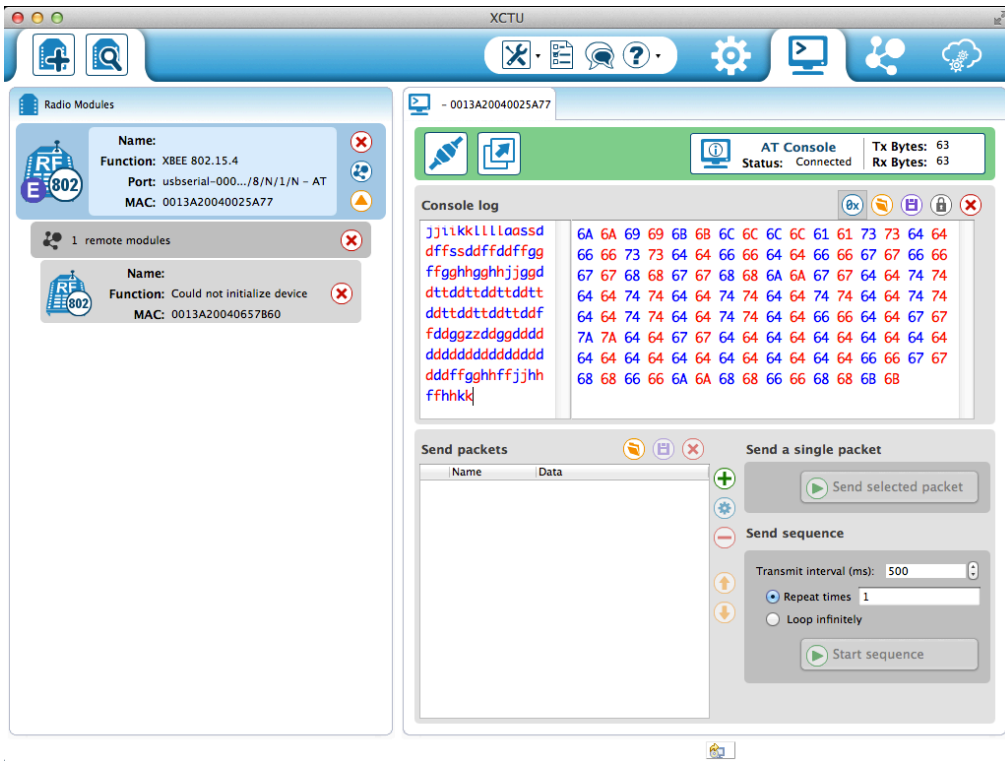
- 2x XBee S1 Modules
- 1x Mac Computer
- 1x XBIB-U-DEV REV. 3 Board
- 1x XBIB-R-DEV REV. 4 Board
- 1x Power adapter for the XBIB-R-DEV Board
- 1x Loopback Adapter
- 1x Type A USB

Procedure:

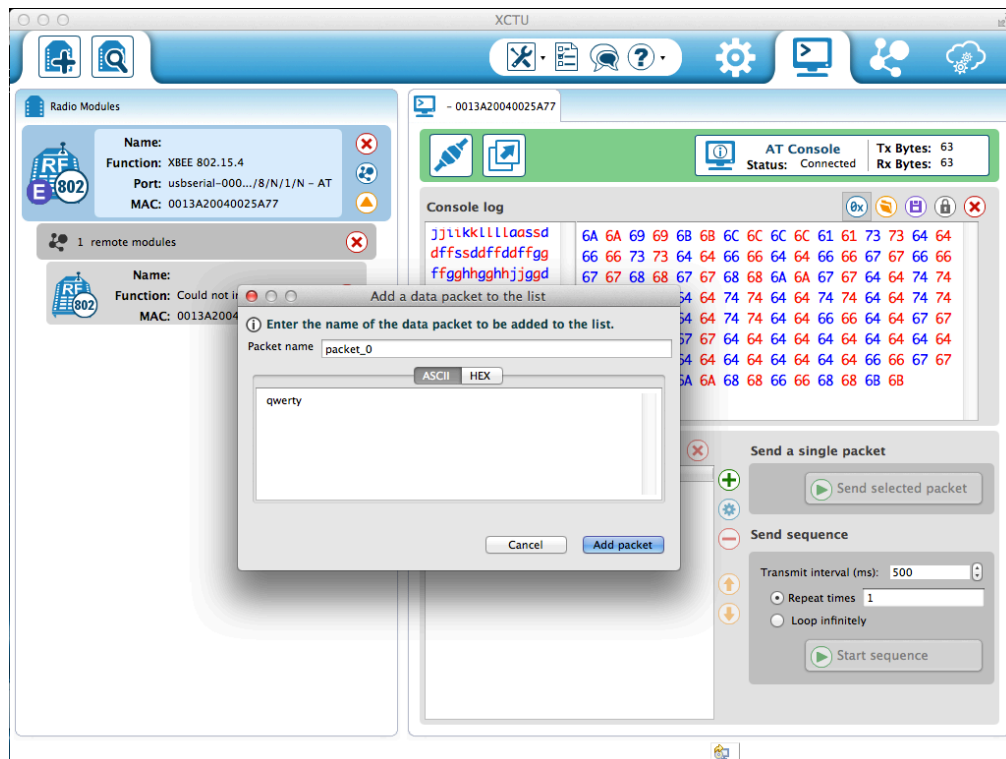
- 1) Once both of your XBees are discovered and added, click on the console icon at the top right to access the console window.



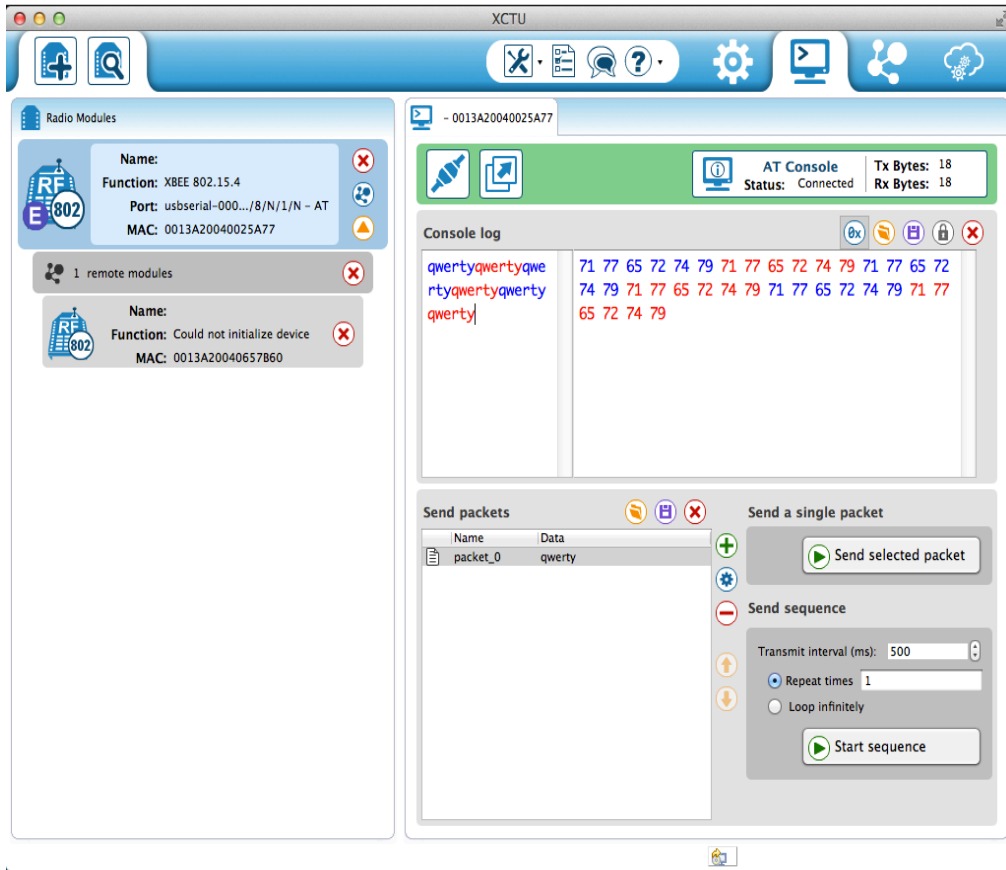
2) Click the plug icon to connect to the XBee. You can type into the console and do some simple tests. The blue text is what you typed and is being echoed back. The red text is what is being looped back by the remote XBee.



3) Click on the green circle with the “+” to create a packet to send.



4) Once you finished typing your message, click Add Packet to finish. You should now see your newly created packet as shown above. Click on the Send selected packet to send it to the remote XBee and it should loop back the message.



5) You can also add other packets of your own for further testing to see that the 2 XBees are communicating properly.

Sources:

-Appnote Using Old X-CTU interface

http://www.ece.ualberta.ca/~elliott/ece492/appnotes/2010w/XBee_Wireless_Communication/

-X-CTU Download

<http://www.digi.com/support/productdetail?pid=3352&osvid=57&type=utilities>

-XBIB-U-Dev board REV.3 driver

<http://www.digi.com/support/productdetail?pid=3130&type=drivers>

-FTDI driver - VCP (Virtual COM port driver for MAC)

<http://www.ftdichip.com/Drivers/VCP.htm>

-XBIB-U-DEV Board Layout

http://ftp1.digi.com/support/documentation/xbibudev_referenceguide.pdf

-XBIB-R-DEV Board Layout

http://ftp1.digi.com/support/documentation/xbibrdev_referenceguide.pdf

-XBee Ref:

<http://www.ladyada.net/make/xbee/ref.html>