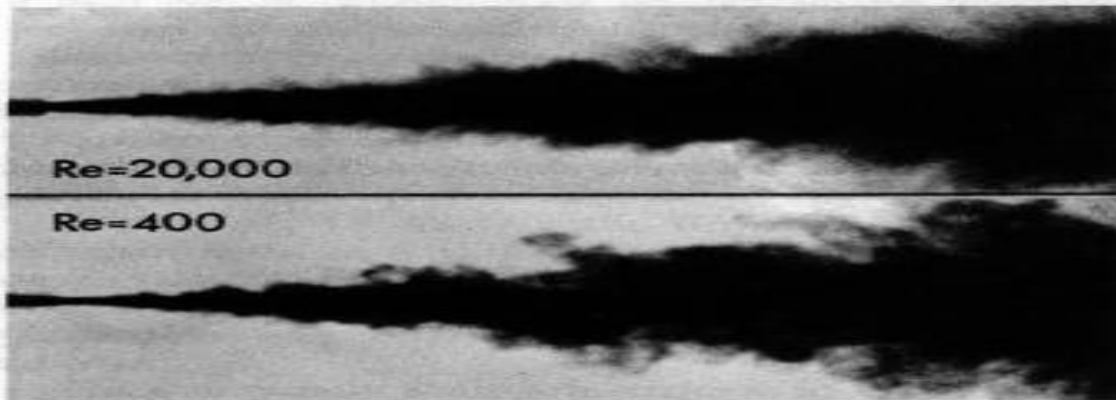


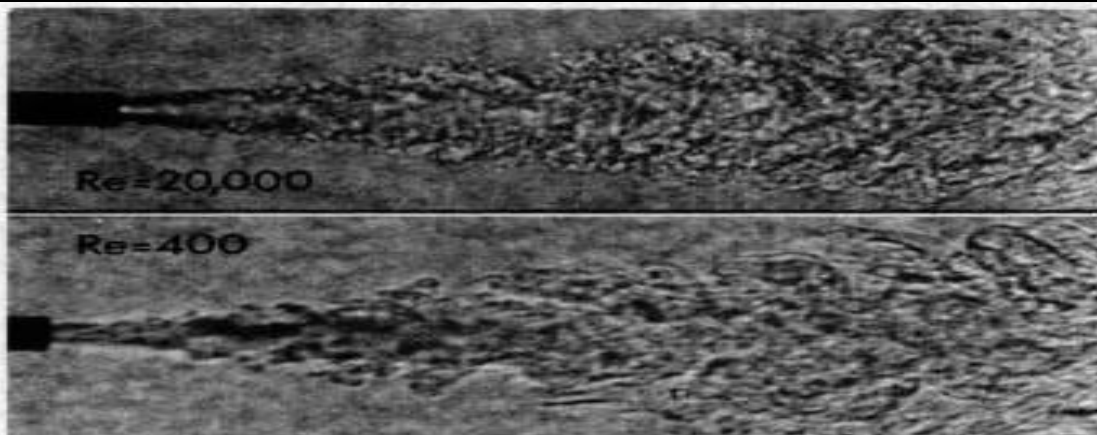
"Scaling in Turbulence"

Shape of jet unaffected by flow rate



7. Turbulent jets showing that the Reynolds number does not much affect the appearance, so long as it is sufficiently large that the jet is indeed turbulent. The upper jet has a Reynolds number 50 times that of the lower.

Smallest eddies decrease with increasing flow rate



8. Shadowgraphs of the jets shown in Fig. 7. Note how much finer grained is the structure in the high-Reynolds-number jet than that in the low-Reynolds-number jet.

Though random, the average behaviour of turbulence can be predictable: e.g. the shape and eddy sizes of the jets above.