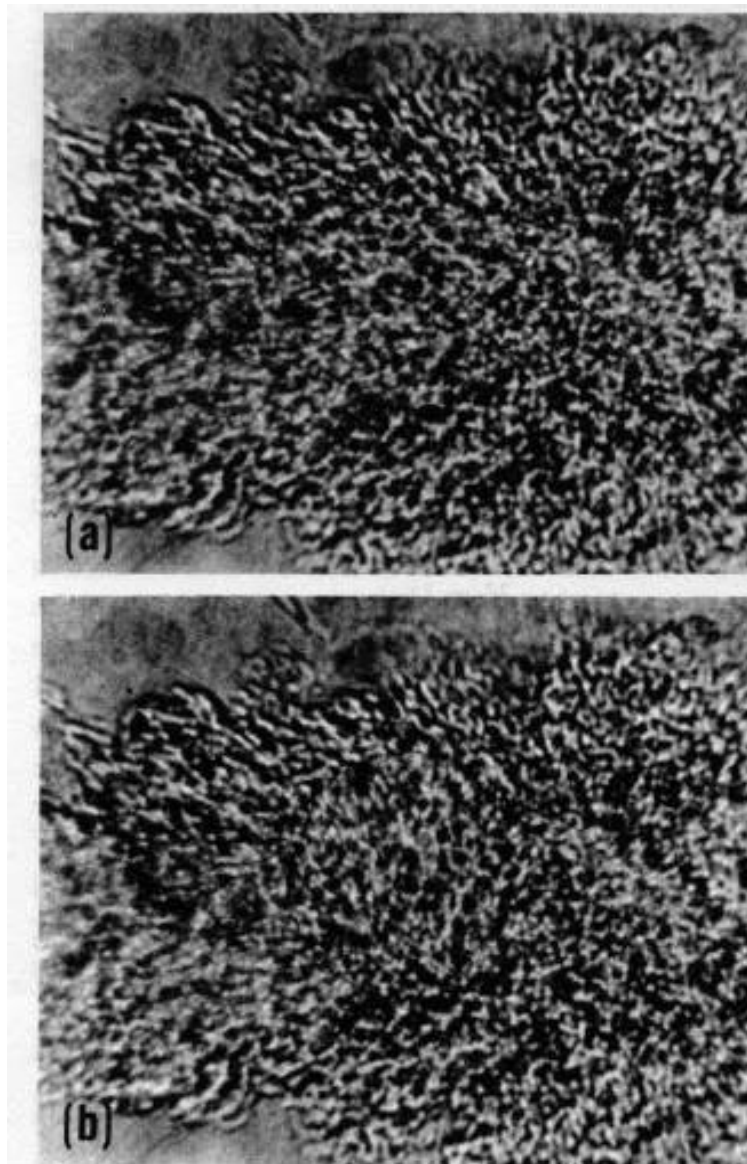


"Symmetry in Turbulence"



9. Shadowgraph of a high-Reynolds-number jet. The only difference between these two photographs is that a circle from the center of Fig. 9(a) has been rotated through some 80 degrees to produce Fig. 9(b). The fact that this circle is hard to locate in Fig. 9(b) indicates that the small-scale turbulence is approximately both isotropic and homogeneous.

In homogeneous turbulence, the structure is isotropic (looks the same when rotated).