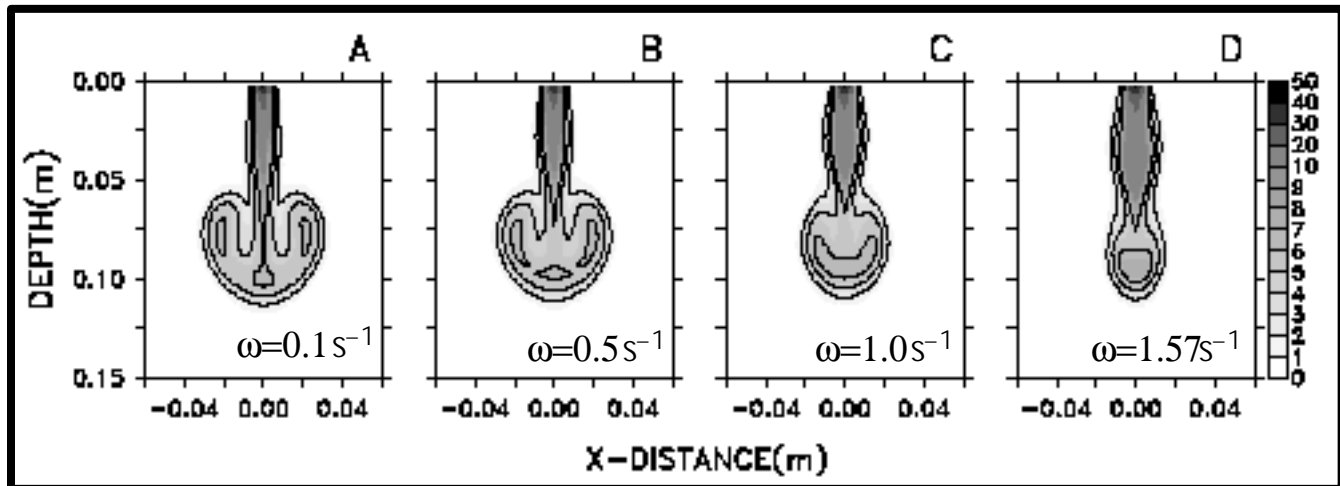


Plumes with Background Rotation

Rotation inhibits the lateral spread of a starting plume.



[adapted from numerical simulations by Lavelle and Smith, JPO (1996)]

The plume descent and spread can be estimated from scaling theory based on buoyancy flux and frequency of rotation:

[from experiments by Fernando et al, Phys Fluids (1998)]