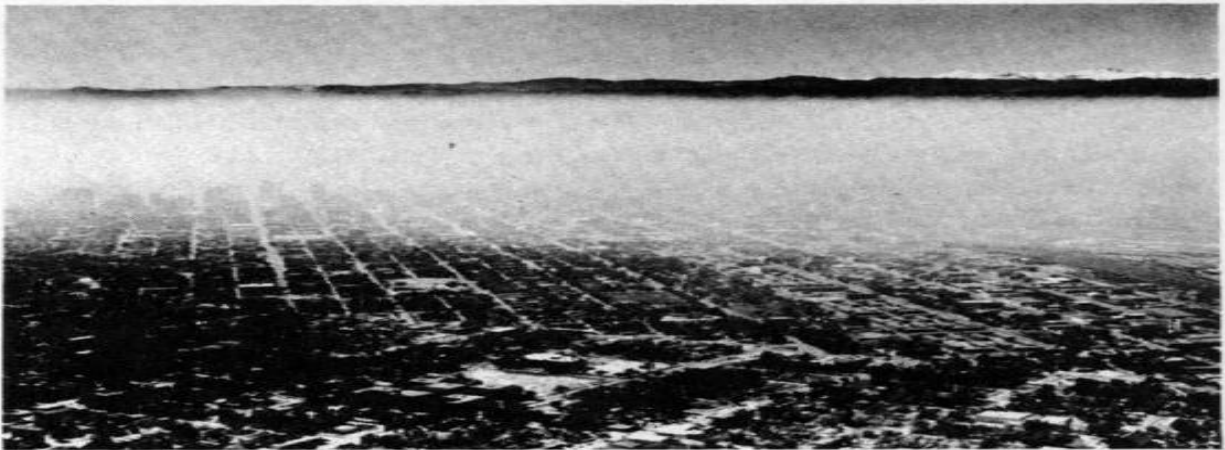


"Atmospheric Inversions"

Smog Trapped at an Atmospheric Inversion



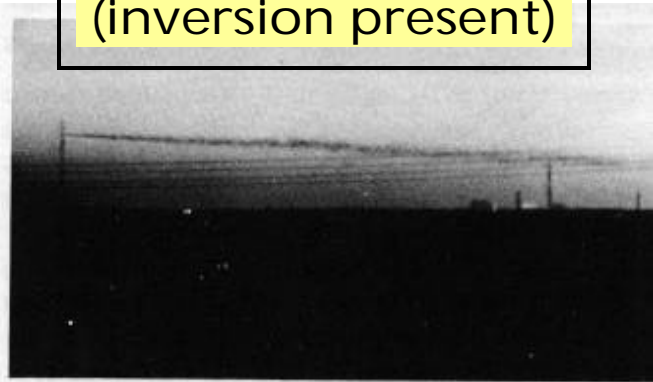
2. Smog. (Courtesy U.S. Public Health Service.)

Unstable Atmosphere
(no inversion)



28. Diffusion of smoke in conditions of neutral stability

Stable Atmosphere
(inversion present)



29. Diffusion of smoke when the atmosphere is stable and stratified.

Pollutants are transported large distances in the presence of an "atmospheric inversion", where the density changes rapidly with height.