

Lodgepole pine – Current

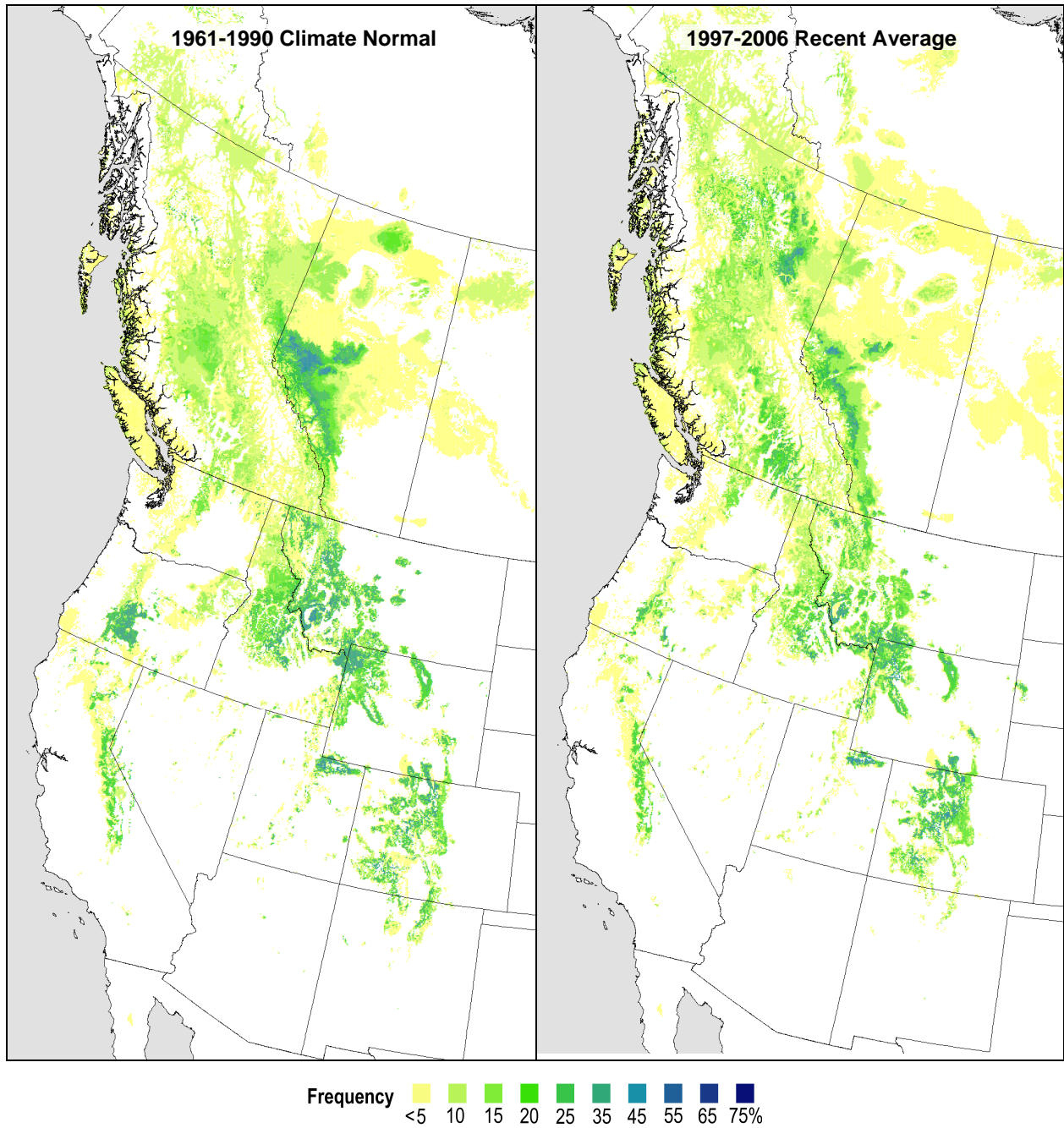


Figure S4a. Projected habitat of lodgepole pine (*Pinus contorta* Douglas ex Loudon). The left image is an expected frequency (% canopy cover projected to the ground) for the 1961-1990 normal period, representing long-term climate condition and model training data. The right image models habitat for the 1997-2006 period, representing a recent (25-year) climate trend.

Lodgepole pine – 2020s

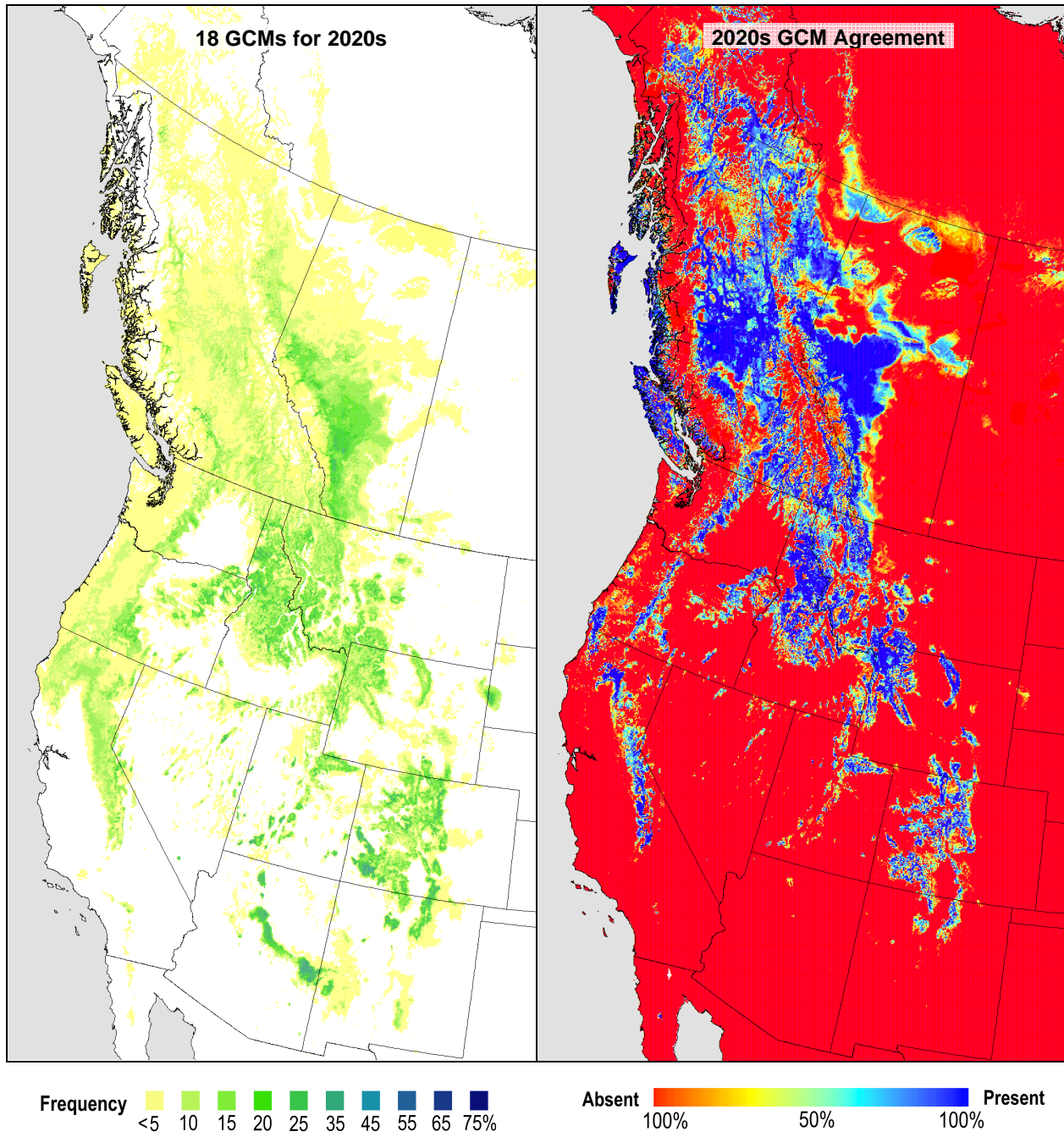


Figure S4b. Projected habitat of lodgepole pine for the 2011–2040 normal period according to 18 climate change projections. The left image is an average expected frequency (% canopy cover projected to the ground). The right image represents agreement of species presence/absence projections for 18 general circulation models.

Lodgepole pine – 2050s

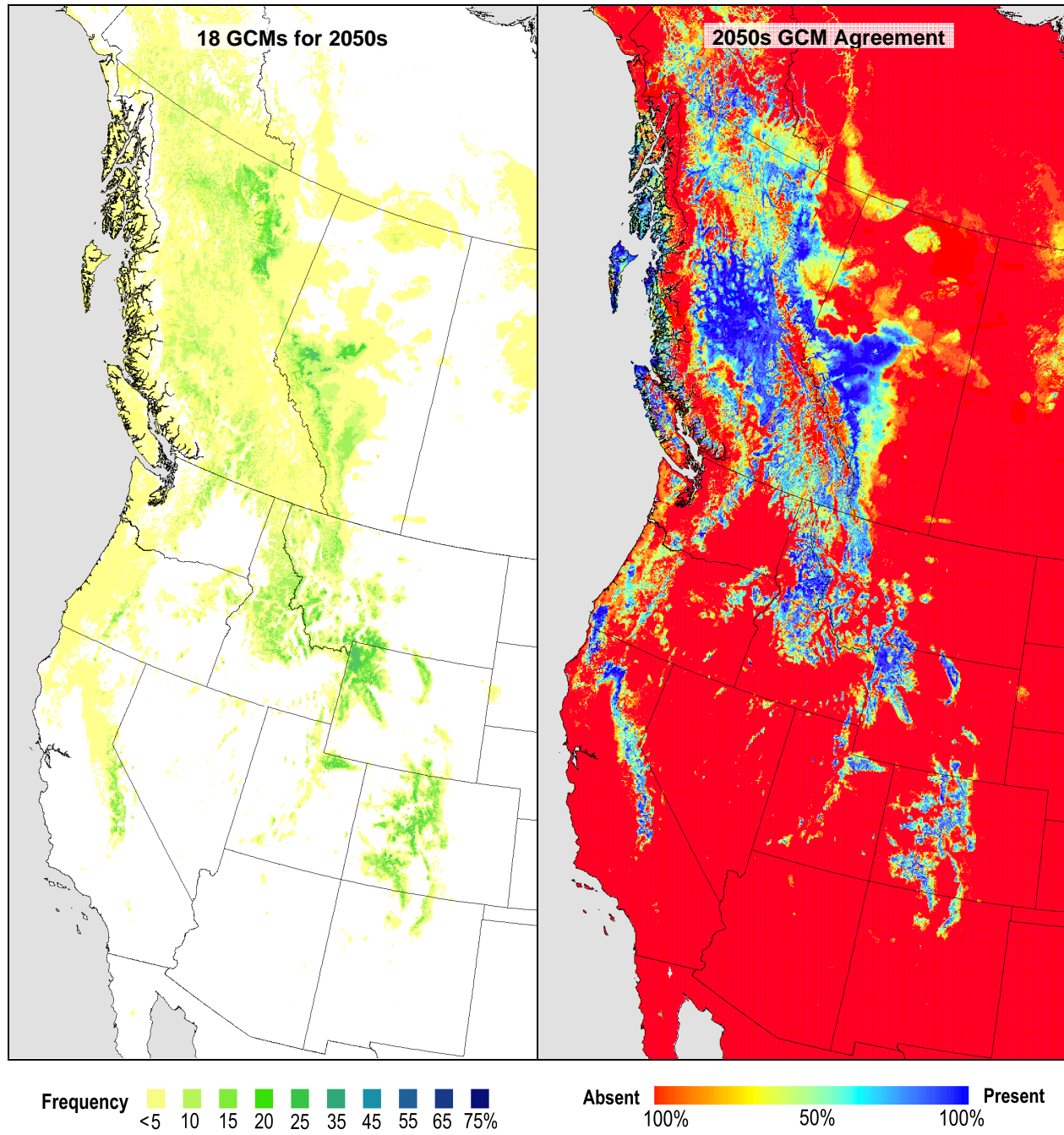


Figure S4c. Projected habitat of lodgepole pine for the 2041–2070 normal period according to 18 climate change projections. The left image is an average expected frequency (% canopy cover projected to the ground). The right image represents agreement of species presence/absence projections for 18 general circulation models.

Lodgepole pine – 2080s

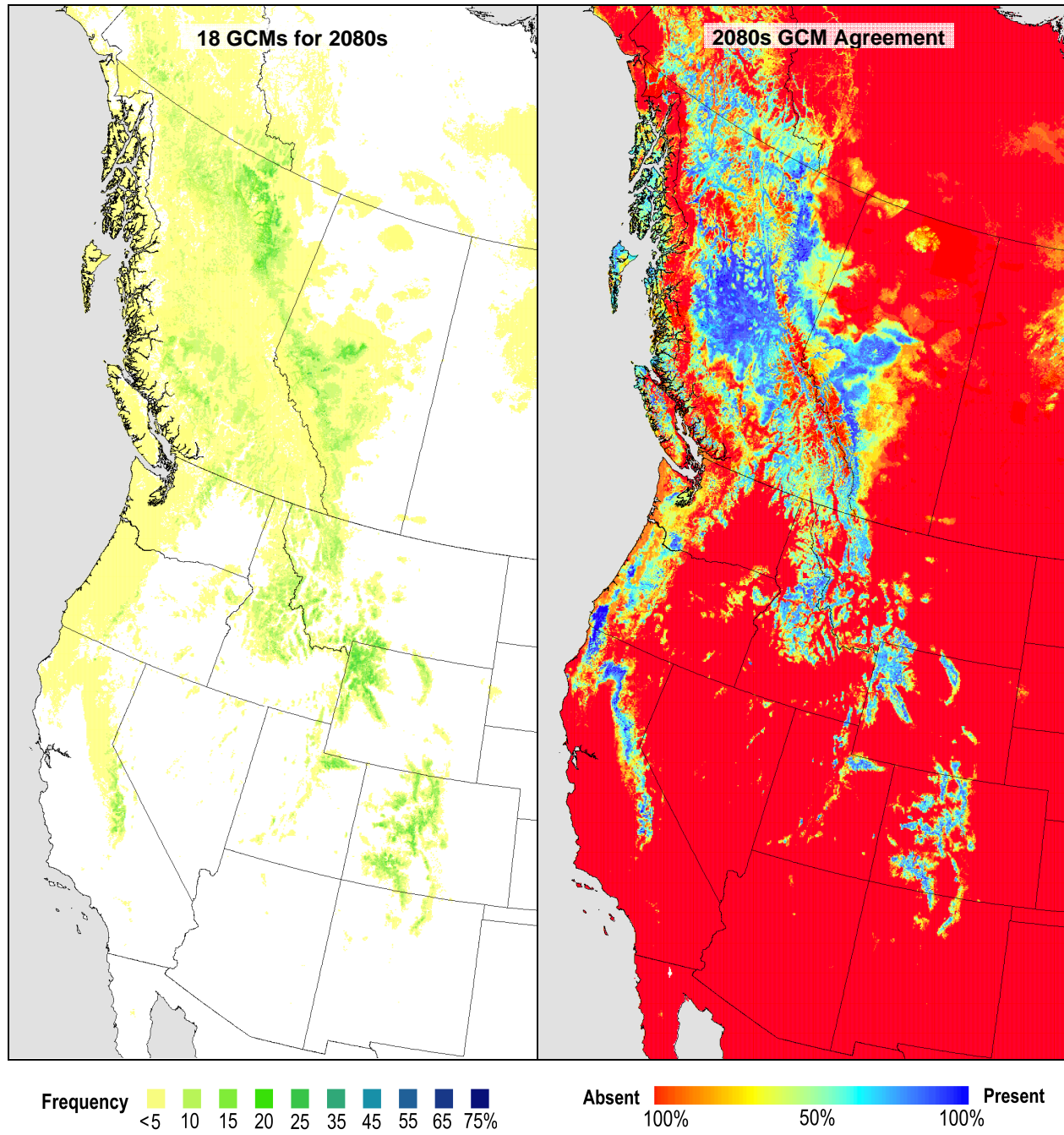


Figure S4d. Projected habitat of lodgepole pine for the 2071–2100 normal period according to 18 climate change projections. The left image is an average expected frequency (% canopy cover projected to the ground). The right image represents agreement of species presence/absence projections for 18 general circulation models.