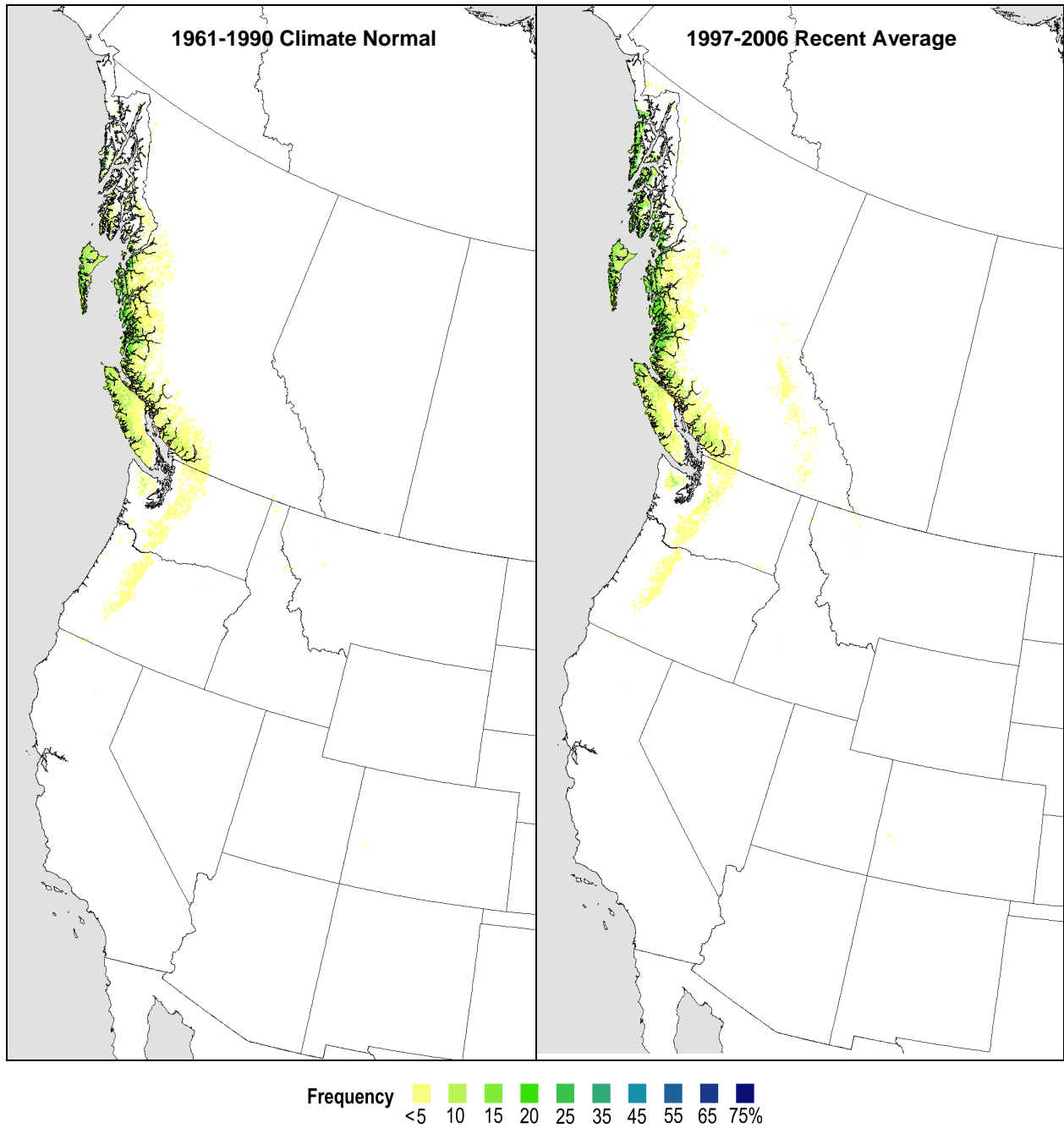
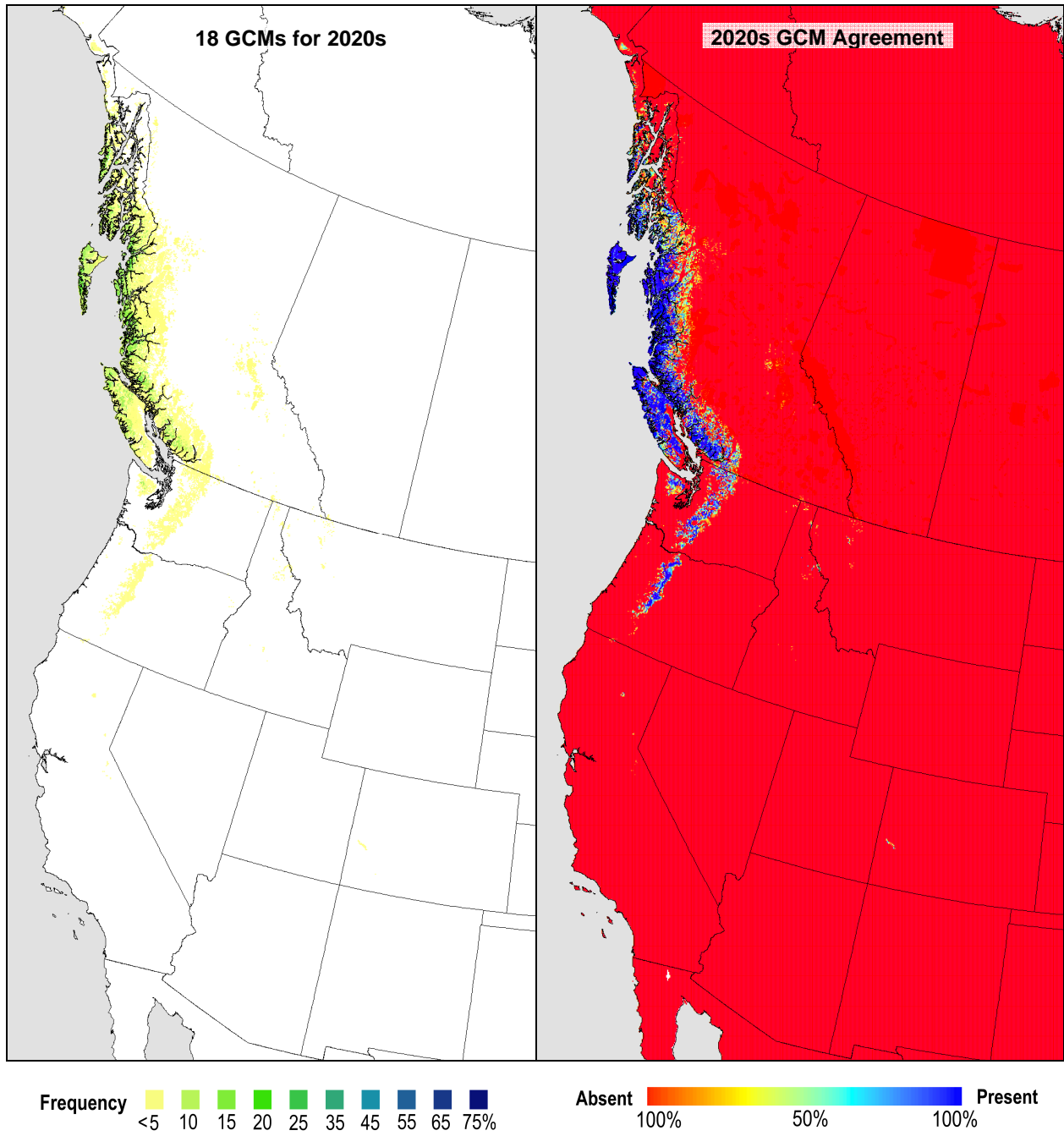


### Yellow cedar – Current



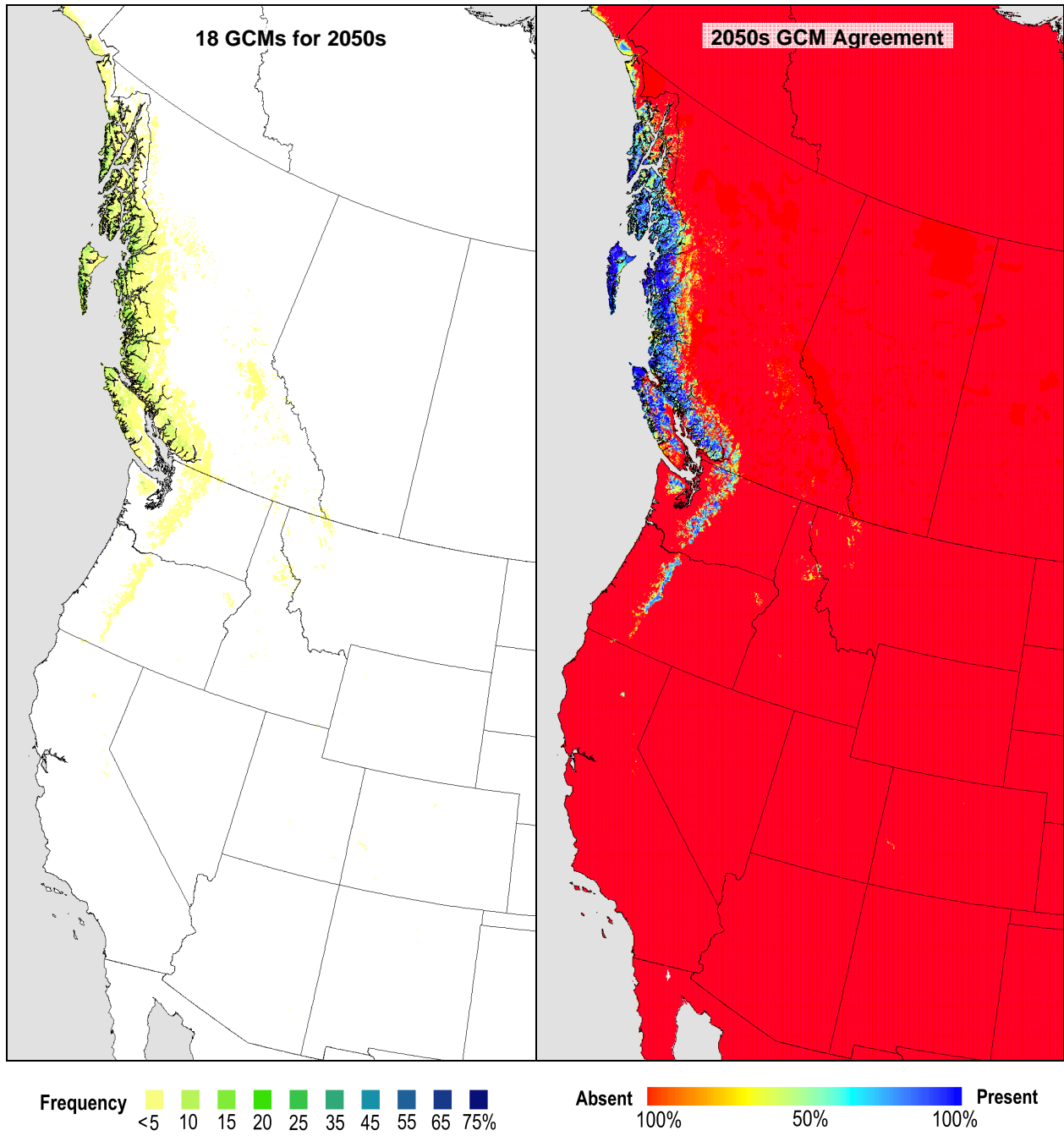
**Figure S15a.** Projected habitat of yellow cedar (*Chamaecyparis nootkatensis* (D. Don) Sudworth). The left image is an expected frequency (% canopy cover projected to the ground) for the 1961-1990 normal period, representing long-term climate condition and model training data. The right image models habitat for the 1997-2006 period, representing a recent (25-year) climate trend.

### Yellow cedar – 2020s



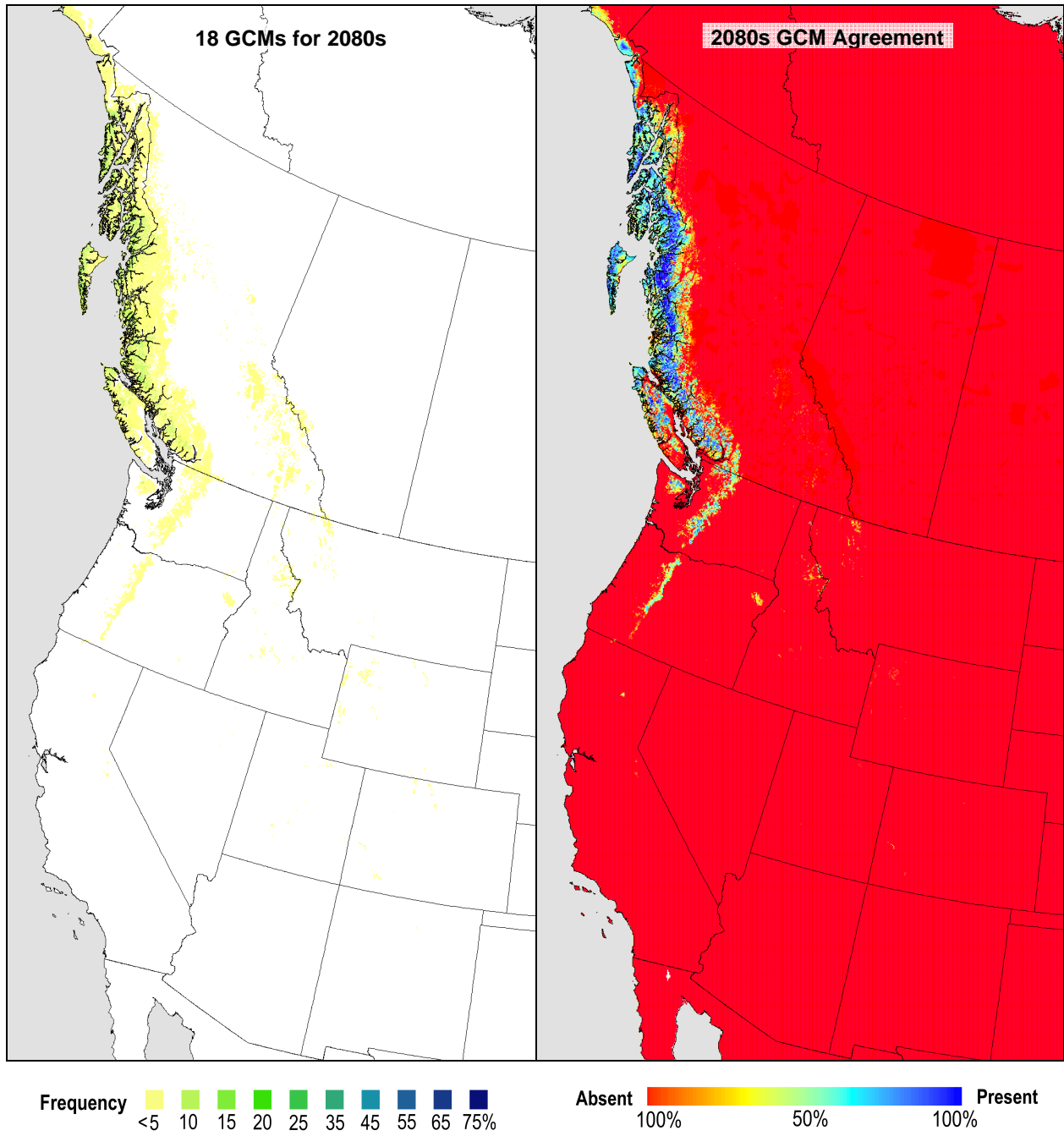
**Figure S15b.** Projected habitat of yellow cedar for the 2011–2040 normal period according to 18 climate change projections. The left image is an average expected frequency (% canopy cover projected to the ground). The right image represents agreement of species presence/absence projections for 18 general circulation models.

### Yellow cedar – 2050s



**Figure S15c.** Projected habitat of yellow cedar for the 2041–2070 normal period according to 18 climate change projections. The left image is an average expected frequency (% canopy cover projected to the ground). The right image represents agreement of species presence/absence projections for 18 general circulation models.

### Yellow cedar – 2080s



**Figure S15d.** Projected habitat of yellow cedar for the 2071–2100 normal period according to 18 climate change projections. The left image is an average expected frequency (% canopy cover projected to the ground). The right image represents agreement of species presence/absence projections for 18 general circulation models.