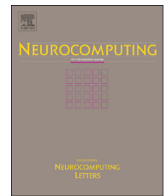




ELSEVIER

Contents lists available at ScienceDirect

Neurocomputing

journal homepage: www.elsevier.com/locate/neucom

Partial functional linear quantile regression for neuroimaging data analysis[☆]

Dengdeng Yu, Linglong Kong^{*}, Ivan Mizera

Department of Mathematical and Statistical Sciences, University of Alberta, Edmonton, AB, Canada T6G 2G1

ARTICLE INFO

Article history:

Received 31 March 2015

Received in revised form

13 June 2015

Accepted 14 August 2015

Available online 4 February 2016

Keywords:

Functional linear quantile regression

Partial quantile covariance

PQR basis

SIMPQR

ADHD

ADNI

ABSTRACT

We propose a prediction procedure for the functional linear quantile regression model by using partial quantile covariance techniques and develop a simple partial quantile regression (SIMPQR) algorithm to efficiently extract partial quantile regression (PQR) basis for estimating functional coefficients. We further extend our partial quantile covariance techniques to functional composite quantile regression (CQR) defining partial composite quantile covariance. There are three major contributions. (1) We define partial quantile covariance between two scalar variables through linear quantile regression. We compute PQR basis by sequentially maximizing the partial quantile covariance between the response and projections of functional covariates. (2) In order to efficiently extract PQR basis, we develop a SIMPQR algorithm analog to simple partial least squares (SIMPLS). (3) Under the homoscedasticity assumption, we extend our techniques to partial composite quantile covariance and use it to find the partial composite quantile regression (PCQR) basis. The SIMPQR algorithm is then modified to obtain the SIMPCQR algorithm. Two simulation studies show the superiority of our proposed methods. Two real data from ADHD-200 sample and ADNI are analyzed using our proposed methods.

Crown Copyright © 2016 Published by Elsevier B.V. All rights reserved.

1. Introduction

Nowadays, there is great need in the analysis of complex neuroimaging data obtained from various cross-sectional and clustered neuroimaging studies. These neuroimaging studies are essential to advancing our understanding of the neural development of neuropsychiatric and neurodegenerative disorders, substance use disorders, the normal brain and the interactive effects of environmental and genetic factors on brain structure and function. Such large imaging studies include the ADNI (Alzheimer's Disease Neuroimaging Initiative), the longitudinal magnetic resonance imaging (MRI) study of schizophrenia, autism, and attention deficit hyperactivity disorder (ADHD), the NIH human connectome project, among many others. Neuroimaging studies usually collect structural, neurochemical, and functional images over both time and space [15,16,33]. These structural,

neurochemical, and functional imaging modalities include computed axial tomography (CT), diffusion tensor imaging (DTI), functional magnetic resonance imaging (fMRI), magnetic resonance imaging (MRI), magnetic resonance spectroscopy (MRS), positron emission tomography (PET), single photon emission tomography (SPECT), electroencephalography (EEG), and magnetoencephalography (MEG), among many others. For instance, by using anatomical MRI, various measures of the morphology of the cortical and subcortical structures (e.g., hippocampus) are extracted to understand neuroanatomical differences in brain structure across different populations [14,36]. In DTI, various diffusion properties and fiber tracts are extracted for quantitative assessment of anatomical connectivity across different populations [4,48–50]. Functional images, such as resting-state functional MRI (rsfMRI), have been widely used in behavioral and cognitive neuroscience to understand functional segregation and integration of different brain regions across different populations [21,34].

A common feature of many imaging techniques is that massive functional data are observed/calculated at the same design points, such as time for functional images (e.g., PET and fMRI) and arclength for structure imaging (e.g. DTI). As an illustration, we present two smoothed functional data that we encounter in neuroimaging studies. First, we consider the BOLD rsfMRI signal, which is based on hemodynamic responses secondary to resting-state. We plot the estimated hemodynamic response functions (HRF) with 172 time courses from 20 randomly selected children

[☆]The Alzheimer's Disease Neuroimaging Initiative: Part of the data used in preparation of this paper were obtained from the Alzheimer's Disease Neuroimaging Initiative (ADNI) database (adni.loni.ucla.edu). As such, the investigators within the ADNI contributed to the design and implementation of ADNI and/or provided data but did not participate in analysis or writing of this report. A complete listing of ADNI investigators can be found at: http://adni.loni.ucla.edu/wp-content/uploads/how_to_apply/ADNI_Acknowledgement_List.pdf.

^{*} Corresponding author.

E-mail address: lkong@ualberta.ca (L. Kong).

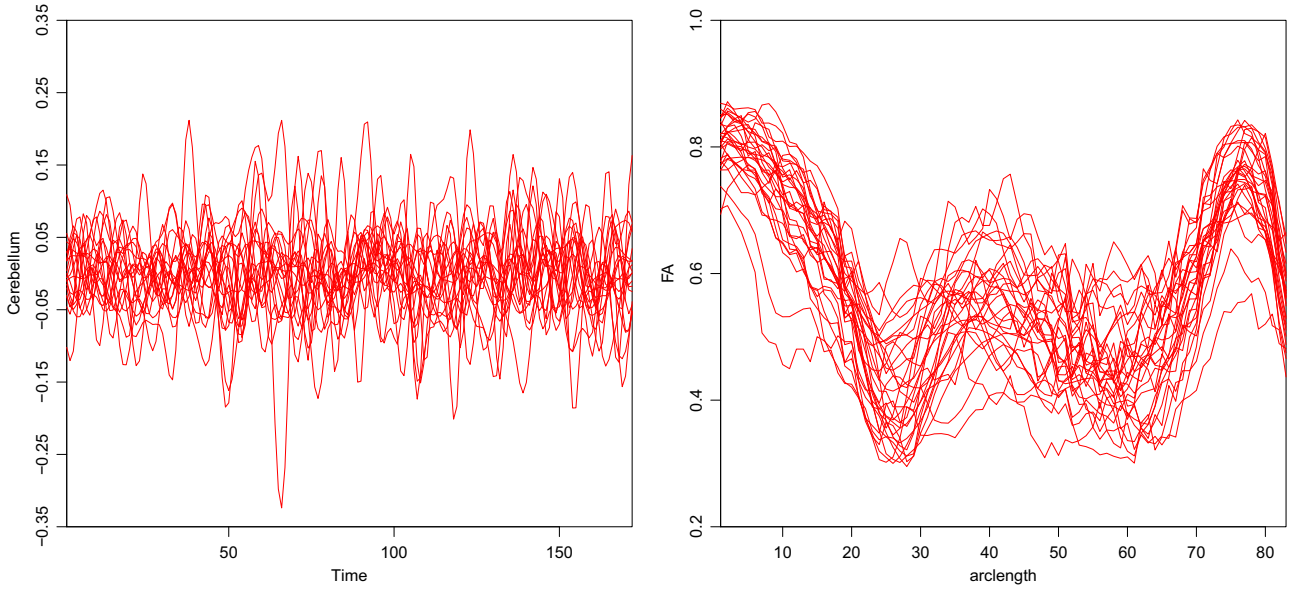


Fig. 1. Representative functional neuroimaging data: (left) the estimated hemodynamic response functions (HRF) corresponding to resting-state from 20 children at NYU from the ADHD-200 Sample Initiative Project and (right) fractional anisotropy (FA) along the midsagittal corpus callosum (CC) skeleton from 30 randomly selected subjects from the NIH Alzheimer's Disease Neuroimaging Initiative (ADNI) study.

at a selected region of interest (ROI) of Anatomical Automatic Labeling (AAL) atlas [42] from the New York University (NYU) Child Study Center from the ADHD-200 Sample Initiative Project. Although the canonical form of the HRF is often used, when applying rsfMRI in a clinical population with possibly altered hemodynamic responses (Fig. 1 (a)), using the subject's own HRF in rsfMRI data analysis may be advantageous because HRF variability is greater across subjects than across brain regions within a subject [1,31]. We are particularly interested in delineating the structure of the variability of the HRF and their capacity of predicting ADHD index with a set of covariates of interest, such as diagnostic group [30]. Secondly, we plot one diffusion property, called fractional anisotropy (FA), measured at 83 grid points along the midsagittal corpus callosum (CC) skeleton (Fig. 1 (b)) from 30 randomly selected infants from the NIH Alzheimer's Disease Neuroimaging Initiative (ADNI) study. The corpus callosum (CC) is the largest fiber tract in the human brain and is a topographically organized structure. It is responsible for much of the communication between the two hemispheres and connects homologous areas in the two cerebral hemispheres. Scientists are particularly interested in delineating the structure of the variability of these functional FA data and their prediction ability on mini-mental state examination (MMSE) with a set of covariates of interest, such as genetic information. MMSE is one of the most widely used screening tests on Alzheimer's Disease to provide brief and objective measures of cognitive functioning [41]. We will systematically investigate these two prediction problems using functional imaging data over time or space in Section 7 after we develop our methodology.

A functional linear regression model, where the responses such as the neurological or clinical outcomes (e.g. ADHD index or MMSE) are modeled by a set of scalar covariates and functional covariates of interest (e.g. HRF along time courses or FA along arclength), is a powerful statistical tool for addressing these scientific questions [17,18,48,49]. In particular, denoting the neurological or clinical outcome of the i -th subject by y_i , $i = 1, \dots, n$, the functional linear regression model is of the form

$$y_i = \alpha + \mathbf{x}_i^T \boldsymbol{\beta} + \int_0^1 \mathbf{z}_i^T(t) \boldsymbol{\gamma}(t) dt + \epsilon_i, \quad (1)$$

where α is the intercept, $\boldsymbol{\beta} = (\beta_1, \dots, \beta_p)^T$ is a $p \times 1$ vector of coefficients, $\mathbf{x}_i = (x_{i1}, \dots, x_{ip})^T$ is a $p \times 1$ vector of scalar covariates of

interest, $\boldsymbol{\gamma}(t) = (\gamma_1(t), \dots, \gamma_q(t))^T$ is a $q \times 1$ vector of coefficient functions of t , $\mathbf{z}_i(t) = (z_{i1}(t), \dots, z_{iq}(t))^T$ is a $q \times 1$ vector of functional covariates, and ϵ_i is a random error. It is usually assumed that ϵ_i is independent and identical copy of normal distribution with zero mean and variance σ^2 . For simplicity, we let $t \in [0, 1]$. Model (1) is a generalization of the classical linear regression model corresponding to the case $\boldsymbol{\gamma}(t)$ is a constant. If it is not constant, the contributions of $\mathbf{z}_i(t)$ characterized by $\boldsymbol{\gamma}(t)$ change in terms of t . The model has been well studied and applied in many fields including neuroimaging data analysis [2,23,29,37]. To facilitate the estimation of $\boldsymbol{\gamma}(t)$, we usually require that it satisfies certain smoothness conditions and restrict it onto a functional space. For example, we may require that its second derivative exists and that the square of $\boldsymbol{\gamma}(t)$ is integrable, that is, $\boldsymbol{\gamma}(t) \in L_2[0, 1]$. Even in such a case, the estimation is still an infinite-dimensional problem.

The common practice is to project $\boldsymbol{\gamma}(t)$ into a functional space with a finite functional basis. There are three major methods to choose the functional basis: general basis, functional principal component (fPC) basis, and partial least square (PLS) basis. There are various options on the selection of general basis, for example B-spline basis [6,9], wavelet basis [45] and so on. In order to provide a good approximation of the functional coefficients, a large number of basis should be chosen. However, this may cause overfitting of the model and to remedy that various penalty methods have been proposed [10,44]. The fPC method has been extensively studied [19,27] where the fPC of $\mathbf{z}_i(t)$ serve as the basis. Its generalization to the reproducing kernel Hilbert space (RKHS) was proposed by Cai and Yuan [7,43] who also studied its minimax rates. Although fPC basis is more data-adapted than the general basis as they use the information of functional covariates and the formed space can explain most of the variation of $\mathbf{z}_i(t)$, it is not necessary that all the fPC basis will contribute to the variation of the responses. Therefore, another appealing choice is the PLS basis which uses both the information of functional covariates and the responses. The PLS basis uses the linear projects of $\mathbf{z}_i(t)$ which best predicts the responses [12].

An alternative to model (1) is the functional linear quantile regression where the conditional quantiles of the responses are modeled by a set of scalar covariates and functional covariates. There are at least three advantages to use conditional quantiles

instead of conditional means. First, quantile regression, in particular median regression, provides an alternative and complement to mean regression while being resistant to outliers in responses. It is more efficient than mean regression when the errors follow a distribution with heavy tails. Second, quantile regression is capable of dealing with heteroscedasticity, the situation when variances depend on some covariates. More importantly, quantile regression can give a more complete picture on how the responses are affected by covariates: for example, some tail behaviors of the responses conditional on covariates. For more background on quantile regression, see the monograph of Koenker [25]. In our case, we consider functional linear quantile regression: for given $\tau \in (0, 1)$,

$$Q_\tau(y_i | \mathbf{x}_i, \mathbf{z}_i(t)) = \alpha_\tau + \mathbf{x}_i^T \boldsymbol{\beta}_\tau + \int_0^1 \mathbf{z}_i^T(t) \boldsymbol{\gamma}_\tau(t) dt, \quad (2)$$

where $Q_\tau(y_i | \mathbf{x}_i, \mathbf{z}_i(t))$ is the τ -th conditional quantile of y_i given covariates \mathbf{x}_i and $\mathbf{z}_i(t)$, α_τ is the intercept, $\boldsymbol{\beta}_\tau = (\beta_{1\tau}, \dots, \beta_{p\tau})^T$ is a $p \times 1$ vector of coefficients and $\boldsymbol{\gamma}_\tau(t) = (\gamma_{1\tau}(t), \dots, \gamma_{q\tau}(t))^T$ is a $q \times 1$ vector of coefficient functions. In the existing literature, model (2) has been well studied and various methods have been proposed. As in functional linear regression, to estimate functional coefficients $\boldsymbol{\gamma}_\tau(t)$ it is convenient to restrict it in a functional space with a finite basis. Similarly, general basis like B-spline can be used to approximate the coefficient functions [8,39]. fPC basis has also been thoroughly investigated with and without scalar covariate \mathbf{x}_i while only one functional covariate presents [24,32,40]. However, there is no analog to the PLS basis method in the functional linear regression model. Therefore, none of the existing methods for model (2) is able to provide more efficient prediction by extracting information from the responses.

In this paper, we propose a prediction procedure for the functional linear quantile regression model (2) by using partial quantile covariance techniques and develop an algorithm inspired by simple partial linear regression, SIMPLS [11], to efficiently extract partial quantile regression (PQR) basis for estimating functional coefficients. We further extend our partial quantile covariance techniques to functional composite quantile regression (CQR) [51] by defining partial composite quantile covariance. The major contributions of this paper can be summarized as follows. We first define partial quantile covariance between two scalar variables through linear quantile regression. Motivated by extracting PLS basis in functional linear regression, we found PQR basis by sequentially maximizing the partial quantile covariance between the response and projections of functional covariates. In order to efficiently extract PQR basis, we develop a simple partial quantile regression (SIMPQR) algorithm analog to SIMPLS. Under the homoscedasticity assumption, we extend our techniques to partial composite quantile covariance and use it to find the partial composite quantile regression (PCQR) basis. The SIMPQR algorithm is then modified to obtain the SIMPCQR algorithm.

The rest of this paper is organized as follows. In Section 2, we define partial quantile covariance and describe how to use it to extract PQR basis in the functional linear quantile regression model. In Section 3, we develop the SIMPQR algorithm and discuss its properties. We discuss how to calculate the PCQR basis by using partial composite quantile covariance and propose the SIMPCQR algorithm in Section 4. Two sets of simulation studies are presented in Section 5 with the known ground truth to examine the finite sample performance of our proposed methodology. In Section 6, we use PQR and PCQR to predict ADHD index and MMSE using data from NYU site from ADHD-200 sample and ADNI, respectively. Some discussions and future research directions are given in Section 7.

2. Partial functional linear quantile regression

In Model (2), we assume without loss of generality that $t \in [0, 1]$ and restrict the functional coefficients $\boldsymbol{\gamma}_\tau(t) \in L_2[0, 1]$. For simplicity, we assume $q=1$, that is, we only consider one functional covariate. The extension of our methodology to more functional covariates is straightforward. The estimation $\boldsymbol{\gamma}_\tau(t)$ is in general a difficult question as it lies in an infinite-dimensional space. However, if it can be well approximated in a finite element space, say, $H[0, 1]$, the solution for the model (2) can be found. Let $b_{k\tau}(t)$, $k = 1, \dots, K$ be a basis of $H[0, 1]$ and $\boldsymbol{\gamma}_\tau(t) = \sum_{k=1}^K \boldsymbol{\gamma}_{k\tau} b_{k\tau}(t)$. Model (2) can be then rewritten as

$$Q_\tau(y_i | \mathbf{x}_i, \mathbf{z}_i(t)) = \alpha_\tau + \mathbf{x}_i^T \boldsymbol{\beta}_\tau + \sum_{k=1}^K \mathbf{z}_{ki} \boldsymbol{\gamma}_{k\tau}, \quad (3)$$

where $\mathbf{z}_{ki} = \int_0^1 \mathbf{z}_i(t) b_{k\tau}(t) dt$. Model (3) is simply a linear quantile regression problem, which is essentially a linear programming problem; its solutions can be obtained by many algorithms—for example, the simplex method [5], the interior point method [25], the MM algorithm [22] and many others, already implemented in various statistical softwares like `quantreg` in R [26].

In the literature, there are many methods devoted to find the crucial basis functions in model (3). The general basis B-spline was proposed and studied by Cardot and others [8,39]. In various models, fPC basis has also been studied [24,32,40]. However, neither basis does use information of the responses and hence they are less efficient to do prediction. In this session, as the motivation of our proposal, we first review the PLS basis in model (1) where both information of the functional covariates and the responses are used to choose the basis functions. Then we propose our developed methodology to choose basis for model (2), namely, partial quantile regression (PQR) basis.

In functional linear regression model (1), the first PLS basis is chosen to be

$$b(t) = \arg \min_{b(t)} \sum_{i=1}^n \left(y_i - \alpha - \mathbf{x}_i^T \boldsymbol{\beta} - \int_0^1 \mathbf{z}_i(t) b(t) dt \right)^2, \quad (4)$$

which is the analog to the partial least square regression in multivariate analysis. The subsequent basis is chosen by iteratively using (4) after taking account of and subtracting the information from previous basis. For more details, see Delaigle and Hall [12]. The essential idea of criteria (4) is to find a direction $b(t)$ so that the projection of $\mathbf{Z}(t)$ on it explains as much as possible the variation of the response after adjusting some covariates. Therefore, as shown in [12], it is equivalent to find a basis $b(t)$ such that the partial covariance

$$\text{COV} \left(Y - \alpha - \mathbf{X}\boldsymbol{\beta}, \int_0^1 \mathbf{Z}(t) b(t) dt \right) \quad (5)$$

is maximized, where $Y = (y_1, \dots, y_n)^T$, $\mathbf{X} = (\mathbf{x}_1, \dots, \mathbf{x}_n)^T$ and $\mathbf{Z}(t) = (\mathbf{z}_1(t), \dots, \mathbf{z}_n(t))^T$. Based on this equation, Delaigle and Hall [12] found an equivalent space with the same dimension as the PLS space and proved the estimation and precision consistency.

The parameters in model (2) are estimated by solving

$$\min_{\alpha, \boldsymbol{\beta}, b(t)} \sum_{i=1}^n \rho_\tau \left(y_i - \alpha - \mathbf{x}_i^T \boldsymbol{\beta} - \int_0^1 \mathbf{z}_i(t) b(t) dt \right), \quad (6)$$

where $\rho_\tau(u) = u(\tau - I(u < 0))$ is the quantile loss function [25] with I being the indicator function. When $\tau = 0.5$, the loss is $\rho_\tau(u) = |u|/2$ and the results are then the median, or least absolute deviation (LAD) regression. To adapt to the idea of PLS basis, that is, to find a direction $b_\tau(t)$ so that the projection of $\mathbf{z}(t)$ on it contributes as much as possible to predict the quantile of the response after adjusting some covariates, we first propose the concepts of

quantile covariance (QC) and partial quantile covariance (PQC). For given $\tau \in (0, 1)$ and a random variable X , the partial quantile covariance $COV_{qr}(Y, Z)$ between two random variables Y and Z is of the form

$$COV_{qr}(Y, Z) = \arg \inf_{\gamma, \alpha, \beta, \gamma_\tau} E(\rho_\tau(Y - \alpha - \beta X - \gamma_\tau Z)), \quad (7)$$

where we first normalize Z to have mean zero and variance one. If there is no X , then $COV_{qr}(Y, Z)$ is quantile covariance between Y and Z . The quantile covariance measures the contribution of Z to the τ -th quantile of Y . It was first proposed and studied by Dodge and Whittaker [13] in the context of partial quantile regression. Li et al. [28] proposed a similar concept of quantile correlation and used it to study the quantile autoregressive model.

To find the partial quantile regression (PQR) basis, similar to that of PLS to maximize the covariance we propose to compute the $b_\tau(t)$ by maximizing

$$COV_{qr}\left(Y - \alpha_\tau - \mathbf{X}\boldsymbol{\beta}_\tau, \int_0^1 \mathbf{Z}(t)b_\tau(t) dt\right). \quad (8)$$

The subsequent basis is computed by iteratively maximizing (8) after taking account of and subtracting the information of the previous basis. Let $\mathbf{Z}_k = \int_0^1 \mathbf{Z}(t)b_{k\tau}(t) dt$, where $b_{k\tau}(t)$ is the k -th PQR basis. Denote $\mathbf{Z}_{(k+1)}(t)$ as $\mathbf{Z}(t)$ after subtracting the information from the first k basis. Then the $(k+1)$ -th basis $b_{(k+1)\tau}(t)$ is obtained by maximizing the partial quantile covariance

$$COV_{qr}\left(Y - \alpha_\tau - \mathbf{X}\boldsymbol{\beta}_\tau - \sum_{j=1}^k \mathbf{Z}_j \boldsymbol{\gamma}_{j\tau}, \int_0^1 \mathbf{Z}_{(k+1)}(t)b_\tau(t) dt\right). \quad (9)$$

We will discuss detailed algorithms in the next section. Once we find an adequate number, K of functional basis elements, we have the approximation model (3), where the parameters are obtained by minimizing

$$\sum_{i=1}^n \rho_\tau\left(y_i - \alpha_\tau - \mathbf{x}_i^T \boldsymbol{\beta}_\tau - \sum_{k=1}^K \mathbf{z}_{ki} \boldsymbol{\gamma}_{k\tau}\right). \quad (10)$$

The number of PQR basis can be chosen that uses BIC or cross validation (CV) as in choosing the number of fPC basis adapted by Kato and other authors [24,40,32].

3. SIMPQR algorithm

In this section, we propose a simple partial quantile regression (SIMPQR) algorithm to iteratively extract the PQR basis from the functional covariates $\mathbf{z}(t)$. A similar algorithm has been studied by Dodge and Whittaker [13] in partial quantile regression with multiple covariates. It is parallel to the SIMPLS for partial least square regression [11]. The motivation is to subsequently maximize (8) after accounting and subtracting the information of the previous basis. To simplify the description of the SIMPQR algorithm, we will drop the scalar covariates \mathbf{x} in model (9) in this section. Let $0 < t_1 < \dots < t_m < 1$ denote the discretized sample points for the functional covariates and we assume they are equally spaced. Recall that we set $q=1$ and we focus on only one functional covariate $\mathbf{z}(t)$. The SIMPQR algorithm is described as follows.

Step 1. *Initialization*: Normalize $\mathbf{z}_i(t_j)$ for each j so that it has mean zero and variance one.

Step 2. *Repeat*:

1. Compute a functional basis $b_\tau(t_j) = COV_{qr}(Y, \mathbf{Z}(t_j))$ for $j = 1, \dots, m$ and rescale it to have $\sum b_\tau^2(t_j) = 1$.

2. Project $\mathbf{z}_i(t_j)$ onto the basis $(b_\tau(t_1), \dots, b_\tau(t_m))^T$ to obtain $\mathbf{z}_i = \sum \mathbf{z}_i(t_j)b_\tau(t_j)$. Denote $\mathbf{Z} = (\mathbf{z}_1, \dots, \mathbf{z}_n)^T$ as the projections for each subjects.
3. Predict $\mathbf{z}_i(j)$ by using simple linear regression with the projection \mathbf{z}_i as the covariate, denoting the result by $\hat{\mathbf{z}}_i(j)$.
4. Subtract the information from the projection \mathbf{z}_i by replacing $\mathbf{z}_i(j)$ by their residuals $\mathbf{z}_i(j) - \hat{\mathbf{z}}_i(j)$.

Step 3. *Stop*: Check stopping criterion and retain the projections $\mathbf{Z}_1, \dots, \mathbf{Z}_K$.

Step 4. *Model*: Fit the model (3) by minimizing Eq. (10).

The SIMPQR algorithm follows the same line of SIMPLS with the covariance being replaced by quantile covariance. The nature of our proposed quantile covariance implies that it is not necessary to adjust the response Y each time after a new basis is obtained. The resulting functional basis is orthogonal to each other due to the prediction in step 2.3. However, it is worth noting that due to the nonadditivity of conditional quantiles, we need to fit model (3) after all the basis elements are picked out, instead of estimating the coefficients of each basis projection once they are chosen.

4. Partial functional linear composite quantile regression

Despite the success of quantile regression (QR), its relative efficiency to the least square regression can be arbitrarily small [25,51]. Composite quantile regression (CQR) proposed by Zou and Yuan [51] inherits some good properties of QR and is capable of providing more efficient estimators under certain conditions. Given two random variables X and Y and quantile level set $0 < \tau_1 < \dots < \tau_L < 1$, the CQR parameters $(\alpha_{\tau_1}, \dots, \alpha_{\tau_L}, \beta)$ are defined as

$$\inf_{\alpha_{\tau_1}, \dots, \alpha_{\tau_L}, \beta} E \sum_{l=1}^L \left(\rho_{\tau_l}(Y - \alpha_{\tau_l} - \beta X)\right), \quad (11)$$

where ρ_{τ_l} is the τ_l -th quantile loss function. Under the homoscedasticity assumption, that is, the model errors do not depend on covariates, all conditional regression quantiles are parallel and they have the same slope β but different intercepts. The CQR is equivalent to fit QR at different quantile levels. However, CQR estimators are more efficient.

For given $0 < \tau_1 < \dots < \tau_L < 1$ and a random variable X similar to (7), the partial composite quantile covariance (PCQC) $COV_{cqr}(Y, Z)$ between two random variables Y and Z is of the form

$$COV_{cqr}(Y, Z) = \arg \inf_{\gamma, \alpha_{\tau_1}, \dots, \alpha_{\tau_L}, \beta, \gamma} E \sum_{l=1}^L \left(\rho_{\tau_l}(Y - \alpha_{\tau_l} - \beta X - \gamma Z)\right), \quad (12)$$

where we first normalize Z to have mean zero and variance one. If there is no X , then $COV_{cqr}(Y, Z)$ is composite quantile covariance (CQC) between Y and Z . The composite quantile covariance measures the contribution of Z to the quantiles of Y at levels $0 < \tau_1 < \dots < \tau_L < 1$. There are some connections between composite quantile covariance and covariance; however, these are beyond the scope of this paper and we plan to discuss them elsewhere.

With the definition of PCQC, we can obtain the PCQR basis for functional linear composite quantile regression by maximizing

$$COV_{cqr}\left(Y - \mathbf{X}\boldsymbol{\beta}, \int_0^1 \mathbf{Z}(t)b(t) dt\right), \quad (13)$$

for a given quantile level set $0 < \tau_1 < \dots < \tau_L < 1$. The subsequent basis is computed by iteratively maximizing (13) after accounting and subtracting the information of the previous basis. Once the PCQR basis is found, the functional linear composite quantile

regression can be easily fitted by a linear program, for example `quantreg` in R [26]. The algorithm to compute the PCQR basis follows the same line of SIMPQR in the last section; we only need to replace COV_{qr} by COV_{cqr} in step 2.1 and keep the rest unchanged.

5. Simulation studies

In this section, we investigate the finite sample performance of our proposed prediction methods, namely partial quantile regression (PQR) basis and partial composite quantile regression (PCQR) basis methods. We compare them with the fPC basis method in functional linear quantile regression (QRfPC) and functional linear composite quantile regression (CQRfPC) models. In addition, we compare them with PLS basis and fPC basis methods in the functional linear regression model. We conduct our simulations in two settings where the first one is in favor of the fPC basis and the second one is a more general case. Both simulations show superior or comparable performance of our proposed methods.

Simulation I: In this simulation, we adapt the setup in Kato [24]. In particular, the model is of the form

$$Y = \int_0^1 \gamma(t)Z(t) dt + \varepsilon,$$

$$\gamma(t) = \sum_{j=1}^{50} \gamma_j \phi_j(t); \quad \gamma_1 = 0.5, \quad \gamma_j = \frac{20}{3}(-1)^{j+1}j^{-2}, j \geq 2, \phi_j(t) = 2^{1/2} \cos(j\pi t),$$

$$Z(t) = \sum_{j=1}^{50} v_j U_j \phi_j(t); \quad v_j = (-1)^{j+1}j^{-1.1/2}, U_j \sim U[-3^{1/2}, 3^{1/2}].$$

Each $X_i(t)$ was observed at $m=201$ equally spaced grid points on $[0, 1]$. We choose the sample size n to be 100, 200, and 500. The error ε follows either Gaussian with mean zero and variance one or Cauchy distribution. In this design we have

$$Q_\tau(Y|X) = F_\varepsilon^{-1}(\tau) + \int_0^1 \gamma(t)Z(t) dt,$$

where F_ε is the cumulative distribution function of ε . It should be pointed out that the simulation set up is in favor of fPC basis methods as the functional coefficients lie on the same fPC space of functional covariates. It is expected that fPC basis methods may be superior to other methods.

To facilitate the comparison, we set $\tau = 0.5$ T for QR methods and $\tau_l = l/(1+L)$ with $L = 9$ for CQR methods. One criteria we use is the mean integrated errors (MISE) of the functional coefficients,

$$\text{MISE} = \frac{1}{S} \sum_{s=1}^S \sum_{j=1}^m (\hat{\gamma}_s(t_j) - \gamma(t_j))^2 = \text{Bias}^2 + \text{Var},$$

where

$$\text{Bias}^2 = \sum_j \left(\frac{1}{S} \sum_s \hat{\gamma}_s(t_j) - \gamma(t_j) \right)^2$$

and

$$\text{Var} = \frac{1}{S} \sum_s \sum_j \left(\hat{\gamma}_s(t_j) - \frac{1}{S} \sum_s \hat{\gamma}_s(t_j) \right)^2.$$

In the simulation, we set the total number of replication $S = 100$. For the first three cutoff levels, Table 1 gives us a summary of the different configurations of parameters for the six methods. Although the simulation design is in favor of fPC based methods, for the small number of cutoff levels, the PLS, PQR and PCQR methods perform better regarding the performance measurements of Bias² and MISE.

Due to the natures of sensitivity against skewness of errors, Fig. 2 shows that the performances of PLS and fPC are much worse in general compared with the other four methods when the errors follow the Cauchy distribution. On the other hand, when the Gaussian errors are employed, for the lower cutoff levels, the PLS, PQR and PCQR methods are very similar. And when the number of cutoff levels becomes larger, the PCQR performs slightly better than the PLS while PQR performs much better than the PCQR. fPC based methods are similar to each other crossing all cutoff levels.

The averaged mean squared error (MSE) of the responses is another prediction performance criteria we consider. Fig. 3 indicates that the prediction errors are much lower for PLS, PQR, PCQR methods compared with those for fPC based methods, due to the fact that fPC based methods are only data driven while the other three methods are both data and response adapted. For the Gaussian errors, although with regard to the functional coefficients estimation PQR is better than both PLS and PCQR methods, taking into consider of the prediction errors, the PLS and PCQR methods perform better than PQR. For the Cauchy errors, PQR performs the best out of the PLS, PQR, PCQR methods which indicates that PQR is more robust against the skewness of error distribution.

Simulation II. In this simulation, we take the $Z_i(t)$ s from a real data study, and generate the Y_i s according to the linear model of

$$Y = \int_0^1 \gamma(t)Z(t) dt + \varepsilon,$$

where the error ε is taken as Gaussian and Cauchy. The centers of errors are taken as zero while the scales are taken as the empirical standard deviation of the true responses multiplied by $\sqrt{5}$. The Z_i s are taken from a benchmark Phoneme dataset, which can be downloaded from <http://www.statweb.stanford.edu/~tibs/ElemStatLearn/>. In these data, $Z_i(t)$ represents log-periodograms constructed from recordings of different phonemes. The periodograms are available at 256 equally spaced frequencies t , which for simplicity we denote by $0 = t_1 < t_2 < \dots < t_m = 1$, where $m = 256$ [20]. We used $n = 1717$ data curves $Z_i(t)$ that correspond to the phonemes “aa” as in “dark” and “ao” as in “water”. This example can also be found in [12].

Computing the first $J=20$ empirical fPC basis functions $\hat{\phi}_1(t), \dots, \hat{\phi}_J(t)$, we consider four different curves $\gamma(t)$ by taking $\gamma(t) = \sum_{j=1}^J a_j \hat{\phi}_j(t)$ for four different sequence of a_j s: (i) $a_j = (-1)^j \cdot \mathbf{1}\{0 \leq j \leq 5\}$; (ii) $a_j = (-1)^j \cdot \mathbf{1}\{6 \leq j \leq 10\}$; (iii) $a_j = (-1)^j \cdot \mathbf{1}\{11 \leq j \leq 15\}$; (iv) $a_j = (-1)^j \cdot \mathbf{1}\{16 \leq j \leq 20\}$. Going through cases (i)–(iv), the models become less favorable for fPC, while we will see the PLS, PQR and PCQR methods manage to capture the interaction between Z and Y using only a few terms.

We take $\tau = 0.5$ and compare the six methods by looking at the MISE, Bias² and Var. As shown in Fig. 4, from cases (i)–(iv), PLS, PQR and PCQR methods perform better and better compared with the fPC based methods. In fact, all the PLS, PQR and PCQR methods manage to obtain a very good fitting using only a much small number of components no matter how the errors are distributed. This shows great superiority of our proposed methods when the functional coefficients do not lie on the fPC space.

Fig. 5 displays the prediction errors MSE when the errors follow Gaussian (left panels) and Cauchy (right panels) distributions. The PLS, PQR and PCQR methods predict better in general compared with fPC based methods. Except for the PLS of Cauchy errors, the MSEs of PQR and PCQR methods decrease immediately with the increase of cutoff levels, while the fPC based methods performed differently under each case. From cases (i)–(iv), the MSEs of fPC based methods begin to drop significantly after a larger and larger cutoff level. And for the same cutoff levels, the differences of the prediction errors between the PLS, PQR and PCQR methods and the fPC based methods become more and more significant from cases (i)–(iv).

Table 1

Simulation I: * flags the minimum values of the six methods in each measurement category of Bias², Var and MISE.

Error	L	n	fPC			QRfPC			CQRfPC			
			Bias ²	Var	MISE	Bias ²	Var	MISE	Bias ²	Var	MISE	
Gaussian	1	100	3.63	0.07*	3.70	3.63	0.09	3.72	3.63	0.07*	3.71	
		200	3.64	0.03*	3.67	3.63	0.04	3.68	3.63	0.04	3.67	
		500	3.69	0.02*	3.70	3.68	0.02*	3.71	3.69	0.02*	3.70	
	2	100	0.78	0.36*	1.14*	0.77	0.39	1.16	0.78	0.36*	1.14*	
		200	0.86	0.17*	1.03	0.86	0.18	1.04	0.86	0.17*	1.03	
		500	0.86	0.09*	0.95	0.86	0.10	0.96	0.86	0.09*	0.95	
	3	100	0.32	0.34*	0.67*	0.33	0.38	0.70	0.32	0.35	0.67*	
		200	0.28	0.19*	0.47*	0.28	0.22	0.50	0.28	0.20	0.48	
		500	0.29	0.08*	0.38	0.29	0.09	0.38	0.29	0.08*	0.38	
	Cauchy	1	100	7.32	> 100	> 100	3.65	0.12	3.76	3.66	0.09*	3.75
			200	4.82	54.42	59.24	3.63	0.10	3.73	3.64	0.08*	3.72
			500	43.78	> 100	> 100	3.71	0.03	3.74	3.72	0.02*	3.74
2		100	7.56	> 100	> 100	0.77	0.40*	1.17*	0.76	0.42	1.18	
		200	2.14	> 100	> 100	0.78	0.21*	0.99	0.77	0.22	1.00	
		500	> 100	> 100	> 100	0.81	0.10*	0.91	0.81	0.10*	0.91	
3		100	6.03	> 100	> 100	0.28	0.48*	0.76*	0.27	0.53	0.80	
		200	3.67	> 100	> 100	0.31	0.24*	0.55*	0.31	0.27	0.58	
		500	> 100	> 100	> 100	0.31	0.11*	0.41*	0.31	0.12	0.42	
Error		L	n	PLS			PQR			PCQR		
				Bias ²	Var	MISE	Bias ²	Var	MISE	Bias ²	Var	MISE
Gaussian		1	100	0.54	0.82	1.36*	0.50*	0.91	1.41	0.52	0.84	1.36*
	200		0.63	0.20	0.83	0.57*	0.26	0.83	0.60	0.21	0.81*	
	500		0.59	0.07	0.66	0.52*	0.10	0.62*	0.56	0.08	0.64	
	2	100	0.11*	1.07	1.18	0.15	1.18	1.33	0.12	1.07	1.19	
		200	0.12*	0.29	0.41*	0.16	0.36	0.52	0.13	0.29	0.43	
		500	0.11*	0.10	0.21*	0.14	0.13	0.27	0.12	0.10	0.23	
	3	100	0.08	2.58	2.66	0.07	2.28	2.36	0.06*	2.65	2.71	
		200	0.04*	0.87	0.91	0.04*	1.10	1.13	0.04*	0.96	0.99	
		500	0.02*	0.26	0.28*	0.02*	0.43	0.45	0.02*	0.30	0.32	
	Cauchy	1	100	71.08	> 100	> 100	0.49	1.23	1.72*	0.48*	1.39	1.87
			200	41.24	> 100	> 100	0.48	0.43	0.91*	0.47*	0.47	0.94
			500	> 100	> 100	> 100	0.46*	0.16	0.62*	0.48	0.17	0.64
2		100	> 100	> 100	> 100	0.16	1.96	2.12	0.12*	3.01	3.13	
		200	> 100	> 100	> 100	0.15	0.67	0.82*	0.12*	0.98	1.09	
		500	> 100	> 100	> 100	0.14	0.23	0.37*	0.11*	0.29	0.41	
3		100	> 100	> 100	> 100	0.13*	5.84	5.97	0.20	14.28	14.48	
		200	> 100	> 100	> 100	0.06*	2.59	2.65	0.11	5.45	5.56	
		500	> 100	> 100	> 100	0.02*	1.01	1.02	0.04	1.67	1.71	

One interesting phenomenon here is that although the PCQR method outperforms the PQR method when the errors are Gaussian distributed, the PQR method regains its superiority when the errors are Cauchy distributed. Compared with what we have observed from simulation I, it may indicate that the PCQR method is only a slightly less favorable alternative to the PLS method when the errors are symmetric. On the other hand, when the errors are distributed in an extremely skewed manner, the PCQR method could not out-perform the PQR method. That is exactly the same situation as the fPC based methods when the CQR method is implemented.

6. Real Data Analysis

Real Data Analysis I. ADHD-200 fMRI data: We apply our proposed method to a dataset on attention deficit hyperactivity disorder (ADHD) from the ADHD-200 Sample Initiative Project. ADHD is the most commonly diagnosed behavioral disorder of childhood, and can continue through adolescence and adulthood. The symptoms include lack of attention, hyperactivity, and impulsive behavior. The dataset we use is the filtered preprocessed resting state data from New York University (NYU) Child Study Center using the Anatomical Automatic Labeling (AAL) [42] atlas. AAL contains 116 Regions of Interests (ROI) fractionated into functional space using

nearest-neighbor interpolation. After cleaning the raw data that failed in quality control or has missing data, we include 120 individuals in the analysis.

The response of interest is the ADHD index, Conners' parent rating scale-revised, long version (CPRS-LV), a continuous behavior score reflecting the severity of the ADHD disease. In the AAL atlas data, the mean of the gray scale in each region is calculated for 172 equally spaced time points. We choose six parts of the brain which contain at least 4 ROIs, namely cerebellum, temporal, vermis, parietal, occipital, and frontal. The six functional predictors for each candidate part are computed by taking the average gray scale of the ROIs corresponding to each part, see Fig. 1 (Left) for some selected subjects at cerebellum. The scalar covariates of primary interest include gender (female/male), age, handedness (continuous between -1 and 1, where -1 denotes totally left-handed and 1 denotes totally right-handed), diagnosis status (categorical with 3 levels: ADHD-combined, ADHD-inattentive and Control as baseline), medication status (yes/no), Verbal IQ, Performance IQ and Full4 IQ. We build the model to predict ADHD index adjusting these 9 scalar covariates (coded with dummy variables) using each of the six functional predictors. We consider the models for each individual functional covariate adjusting for the 9 scalar covariates.

Fig. 6 displays the changes of MSEs for all six methods, with the increase of the number of cutoff level L for different brain regions.

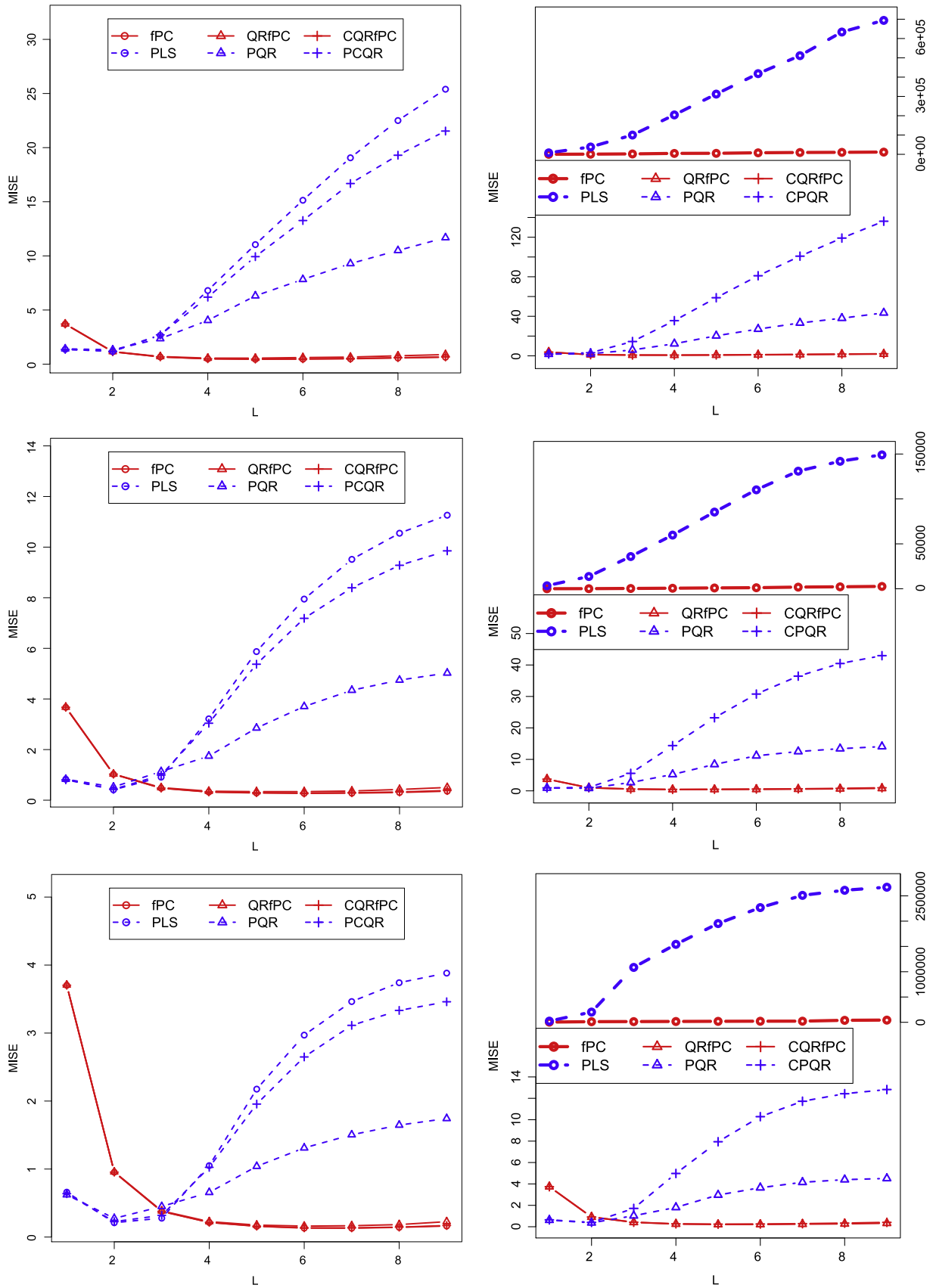


Fig. 2. Simulation I: the MISEs with Gaussian (left) and Cauchy (right) errors, sample size $n=100, 200$, and 500 from up to down.

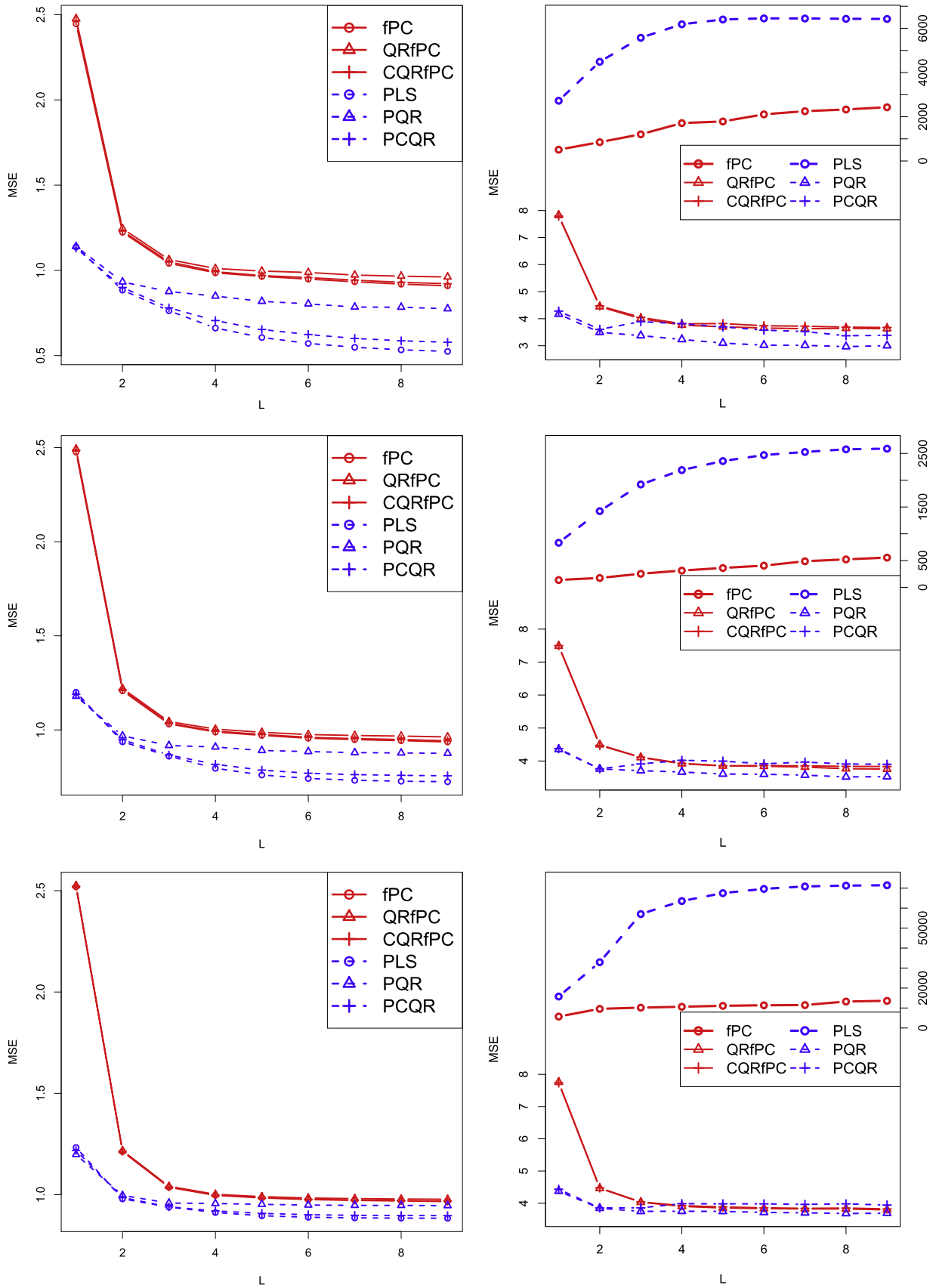


Fig. 3. Simulation I: the averaged MSEs with Gaussian (left) and Cauchy (right) errors, sample size $n=100, 200$, and 500 from up to down.

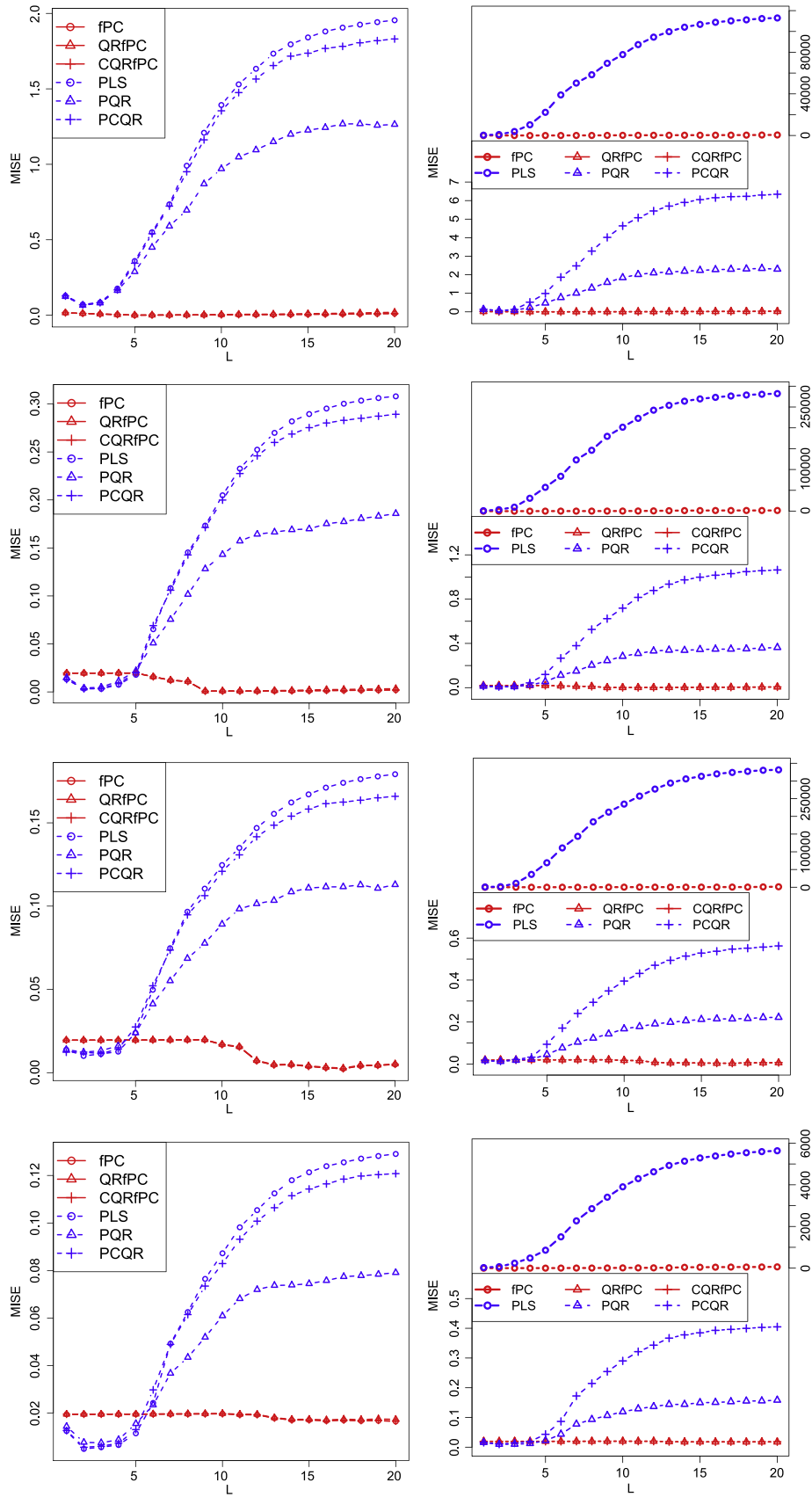


Fig. 4. Simulation II: the MISEs with Gaussian (left) and Cauchy (right) errors, cases I, II, III, and IV from up to down.

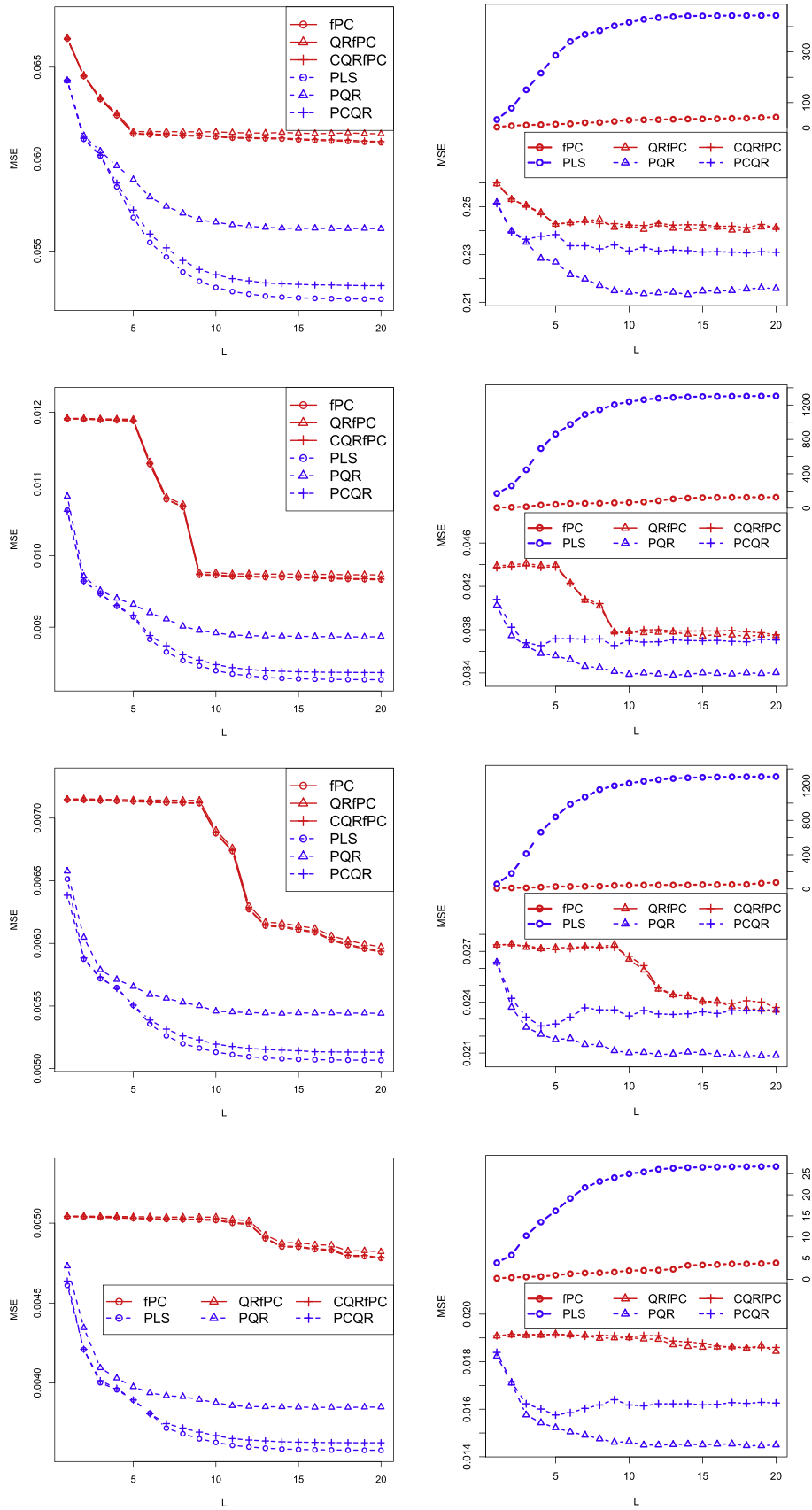


Fig. 5. Simulation II: the averaged MSEs with Gaussian (left) and Cauchy (right) errors, cases I, II, III, and IV from up to down.

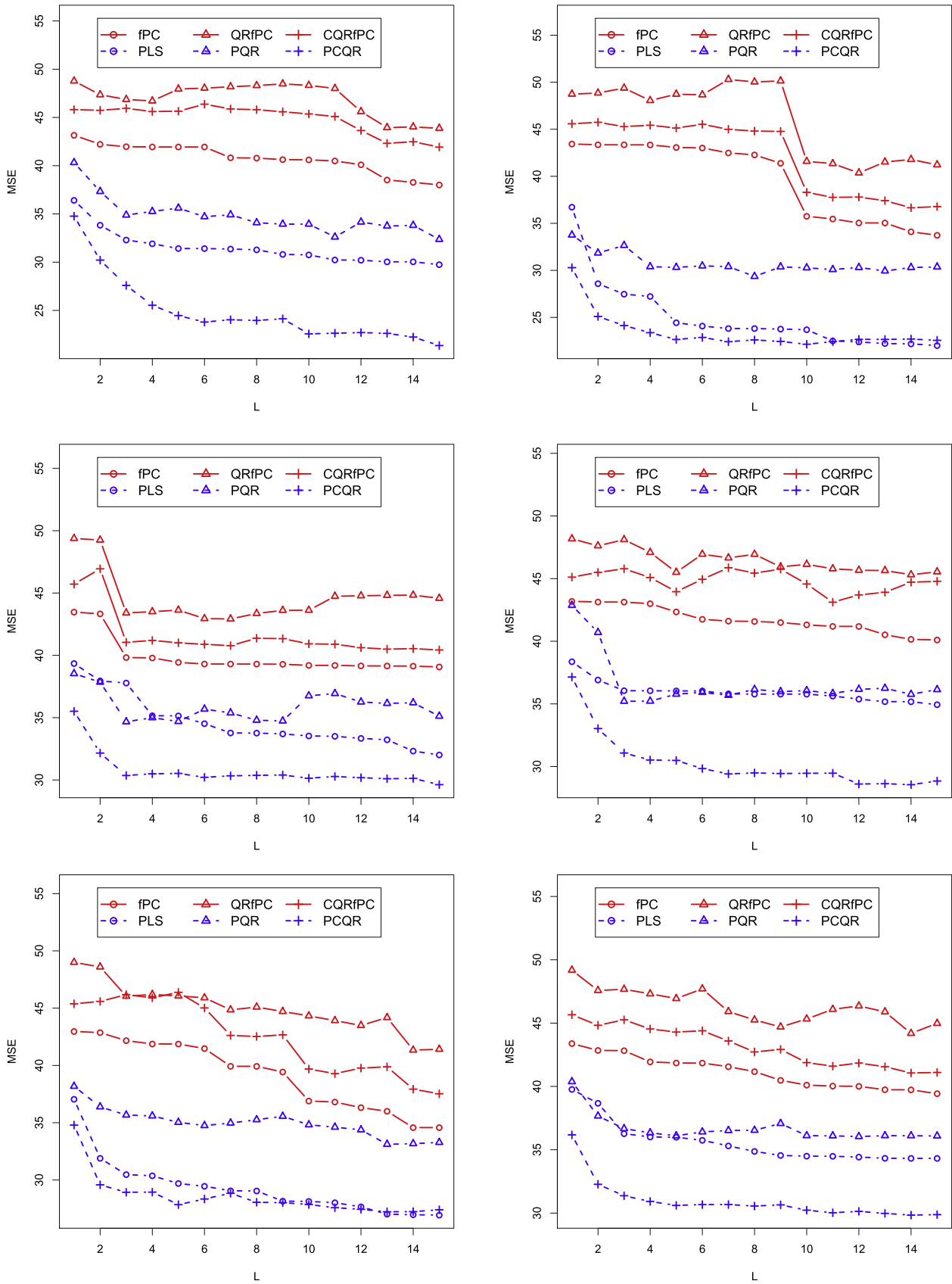


Fig. 6. Real Data Analysis I: ADHD-200 fMRI data, from up to down there are cerebellum, vermis, and occipital on the left panels and temporal, parietal, and frontal on the right panel.

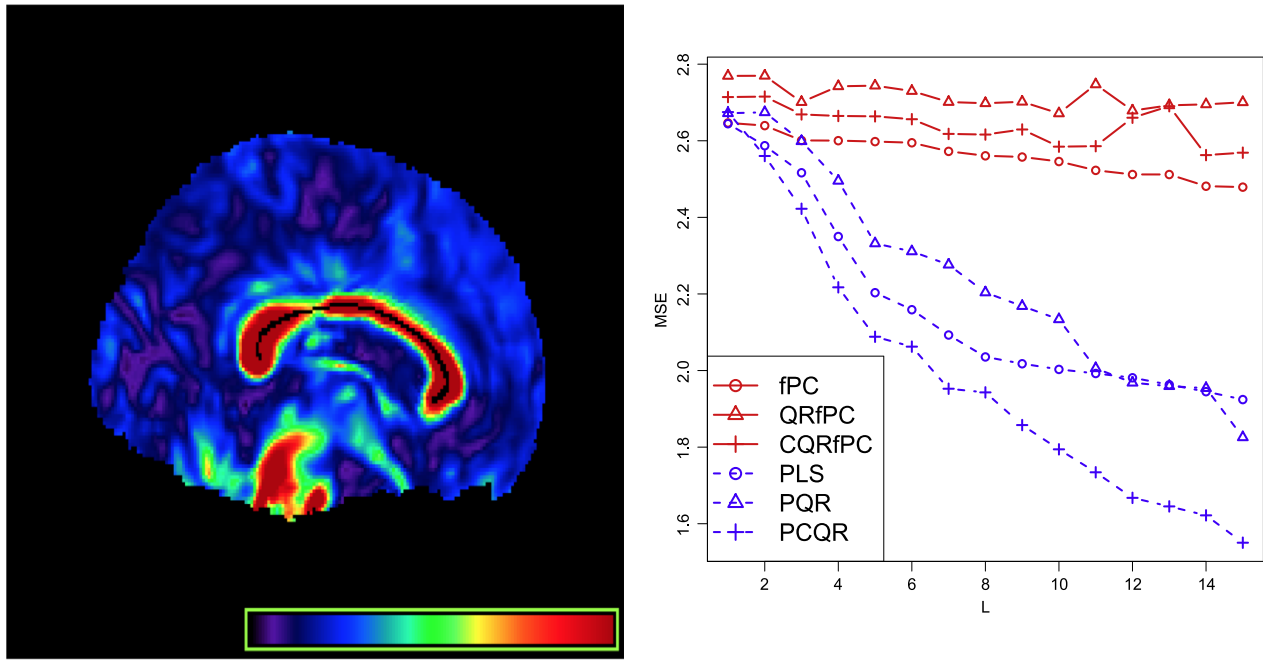


Fig. 7. Real Data Analysis II: (left) the midsagittal corpus callosum (CC) skeleton overlaid with fractional anisotropy (FA) from one randomly selected subject and (right) the MSE of mini-mental state examination (MMSE) at different cut-off levels.

Here the quantile level τ is chosen to be fixed as 0.5. As shown in the figure, PLS, PQR and PCQR methods perform much better than the fPC based methods while PCQR shows a significant superiority. In general, for each method only a few basis functions is capable of predicting the response well and additional basis functions do not decrease MSE much. This is more obvious for PLS, PQR and PCQR methods as they consider information from the response while choose basis functions.

Real Data Analysis II. ADNI DTI data: We use our model methods to analyze a real DTI data set with $n = 214$ subjects collected from NIH Alzheimer's Disease Neuroimaging Initiative (ADNI) study. Data used in the preparation of this paper were obtained from the Alzheimer's Disease Neuroimaging Initiative (ADNI) database (adni.loni.ucla.edu). The ADNI was launched in 2003 by the National Institute on Aging (NIA), the National Institute of Biomedical Imaging and Bioengineering (NIBIB), the Food and Drug Administration (FDA), private pharmaceutical companies and non-profit organizations, as a \$60 million, 5-year public private partnership. The primary goal of ADNI has been to test whether serial magnetic resonance imaging (MRI), positron emission tomography (PET), other biological markers, and clinical and neuropsychological assessment can be combined to measure the progression of mild cognitive impairment (MCI) and early Alzheimer's disease (AD). Determination of sensitive and specific markers of very early AD progression is intended to aid researchers and clinicians to develop new treatments and monitor their effectiveness, as well as lessen the time and cost of clinical trials. The Principal Investigator of this initiative is Michael W. Weiner, MD, VA Medical Center and University of California, San Francisco. ADNI is the result of efforts of many coinvestigators from a broad range of academic institutions and private corporations, and subjects have been recruited from over 50 sites across the U.S. and Canada. The initial goal of ADNI was to recruit 800 subjects but ADNI has been followed by ADNI-GO and ADNI-2. To date these three protocols have recruited over 1500 adults, ages 55–90, to participate in the research, consisting of cognitively normal older individuals, people with early or late MCI, and people with early AD. The follow up duration of each group is specified in the protocols for ADNI-1, ADNI-2 and

ADNI-GO. Subjects originally recruited for ADNI-1 and ADNI-GO had the option to be followed in ADNI-2. For up-to-date information, see <http://www.adni-info.org>. The significance level is an ongoing public-private partnership to test whether genetic, structural and functional neuroimaging, and clinical data can be integrated to assess the progression of mild cognitive impairment (MCI) and early Alzheimer's disease (AD). The structural brain MRI data and corresponding clinical and genetic data from baseline and follow-up were downloaded from the ADNI publicly available database (<https://www.ida.loni.usc.edu>).

The DTI data were processed by two key steps including a weighted least squares estimation method [3,50] to construct the diffusion tensors and a FSL TBSS pipeline [38] to register DTIs from multiple subjects to create a mean image and a mean skeleton. Specifically, maps of fractional anisotropy (FA) were computed for all subjects from the DTI after eddy current correction and automatic brain extraction using FMRIB software library. FA maps were then fed into the TBSS tool, which is also part of the FSL. In the TBSS analysis, the FA data of all the subjects were aligned into a common space by non-linear registration and the mean FA image was created and thinned to obtain a mean FA skeleton, which represents the centers of all WM tracts common to the group. Subsequently, each subject's aligned FA data were projected onto this skeleton. We focus on the midsagittal corpus callosum skeleton and associated FA curves from all subjects, see Fig. 1 (right) for some selected subjects. The corpus callosum (CC) is the largest fiber tract in the human brain and is a topographically organized structure, see Fig. 7 (left). It is responsible for much of the communication between the two hemispheres and connects homologous areas in the two cerebral hemispheres. It is important in the transfer of visual, motoric, somatosensory, and auditory information.

We are interested in predicting mini-mental state examination (MMSE) scores, one of the most widely used screening tests, which are used to provide brief, objective measures of cognitive functioning for almost fifty years. The MMSE scores have been seen as a reliable and valid clinical measure quantitatively assessing the severity of cognitive impairment. It was believed that the MMSE

scores to be affected by demographic features such as age, education and cultural background, but not gender [41]. After quality control and excluding the missing data, we include 200 subjects from the total 217 subjects. The functional covariate is fractional anisotropy (FA) values along the corpus callosum (CC) fiber tract with 83 equally spaced grid points, which can be treated as a function of arc-length. The scale covariates are the gender variable (coded by a dummy variable indicating for male), the age of the subject (years), the education level (years), an indicator for Alzheimer's disease (AD) status (19.6%) and an indicator for mild cognitive impairment (MCI) status (55.1%), and genotypes for apolipoprotein E ϵ -4 (coded by three indicator variables for four levels).

The MSEs are shown in Fig. 7. In general, PLS, PQR and PCQR methods present consistently better than fPC based methods while PCQR outperforms PQR and PCQR methods. The phenomenon has been observed from the previous read data analysis, which indicates that for brain imaging data PCQR method has an improved prediction accuracy compared with PQR and PCQR methods. With the number of functional basis increases, the MSEs do not decrease much for fPC based methods while constantly decrease for PLS, PQR and PCQR methods. This indicates that the fPC basis is not suitable to do prediction though they may account a large portion of the variations of functional covariates. The PLS, PQR and PCQR methods are capable of explaining a large percentage variation of the response and reducing the MSEs by proving appropriate basis functions. Our proposed methods show great superiority to the fPC based methods and the PLS methods and provide a powerful tool to do prediction in practice.

7. Discussion

In this paper, we first define the concept partial quantile covariance (PQC) to measure the contribution of one covariate to the response. We then propose the partial functional linear quantile regression method to use partial quantile regression (PQR) to extract PQR basis to effectively predict the response. This is motivated by the success of the partial least square (PLS) basis in the functional linear regression model. The key idea is to use both information from the functional covariates and the response and therefore both PQR basis and PLS basis can be treated as supervised learning while fPC based methods are semi-supervised learning as they only use information from the functional covariates. The algorithm SIMPQR we developed is analogous to that of SIMPLS. We extend PQC to partial composite quartile covariance (PCQC) and propose the PCQR basis and its SIMPCQR algorithm under the homoscedasticity condition.

The simulations show that PLS, PQR and PCQR in general perform better than the fPC based methods. However, the PQR method is more robust against skewness of error distribution while the PLS and PCQR methods act similar to each other and perform better than the PQR method when the error distribution is symmetric. This advantage from the PQR method can be explained by the general nature of quantile method which obtains its robustness by sacrificing certain efficiency. By assuming homoscedasticity, the PCQR method acts similar to the PLS method when the error distributions are symmetric but retains its robustness when the error distributions are extremely skewed.

Our proposed methods, PQR and PCQR methods, significantly outperform other methods, especially those fPC based methods in both ADHD-200 fMRI data analysis and ADNI DTI data analysis. In ADHD-200 fMRI data analysis, our methods are capable of reducing much more MSEs by using only a few basis while the fPC based method is not even by adding more basis. In ADNI DTI data analysis, both PQR and PCQR methods reduce significant amount

MSEs with more and more basis. On the other hand, fPC based methods perform poor even with more basis. Overall in the two neuroimaging data analyses, PCQR performs slightly better than PQR though.

The consistency of the PLS methods was proved by Delaigle and Hall [12] where they found an equivalent space with explicit expressed basis functions to the PLS basis space. For PQR and PCQR methods, it is difficult to find such equivalent space and therefore their consistency may not be easy to show. The difficulty of the problem lies on the iterative nature of PQR and PCQR methods where basis is sequentially extracted. One way to overcome that is to find preselected number of basis simultaneously [47]. Another direction is to impose certain structure on the selected basis, for example, sparsity and smoothness in PLS methods [35]. This can be done for simultaneous basis selection as well [46].

In both simulation studies and Real Data Analysis, only univariate functional covariate case is considered. However, the extension of PQR and PCQR methods to multivariate functional covariates is straightforward. The computation becomes more complex and intensive due to the iterative basis extraction nature. Such complexity is expected to be significantly reduced by applying simultaneous basis selection or imposing certain structure on the selected basis. Further details are out of the scope of this paper and will be pursuit in the future research.

Acknowledgments

Dengdeng Yu and Dr. Linglong Kong's research were supported by the startup from the University of Alberta and grants from the Natural Sciences and Engineering Research Council of Canada. Dr. Ivan Mizera's research was supported by grants from the Natural Sciences and Engineering Research Council of Canada. Dr. Linglong Kong also wants to thank the support of the Program on Low-dimensional Structure in High-dimensional Systems (LDHD) at the Statistical and Applied Mathematical Sciences Institute (SAMSI) during his visit in 2014.

Part of data collection and sharing for this project was funded by the Alzheimer's Disease Neuroimaging Initiative (ADNI) (National Institutes of Health Grant U01 AG024904). ADNI is funded by the National Institute on Aging, the National Institute of Biomedical Imaging and Bioengineering, and through generous contributions from the following: Alzheimer's Association; Alzheimer's Drug Discovery Foundation; BioClinica, Inc.; Biogen Idec Inc.; Bristol-Myers Squibb Company; Eisai Inc.; Elan Pharmaceuticals, Inc.; Eli Lilly and Company; F. Hoffmann-La Roche Ltd and its affiliated company Genentech, Inc.; GE Healthcare; Innogenetics, N.V.; IXICO Ltd.; Janssen Alzheimer Immunotherapy Research & Development, LLC.; Johnson & Johnson Pharmaceutical Research & Development LLC.; Medpace, Inc.; Merck & Co., Inc.; Meso Scale Diagnostics, LLC.; NeuroRx Research; Novartis Pharmaceuticals Corporation; Pfizer Inc.; Piramal Imaging; Servier; Synarc Inc.; and Takeda Pharmaceutical Company. The Canadian Institutes of Health Research is providing funds to support ADNI clinical sites in Canada. Private sector contributions are facilitated by the Foundation for the National Institutes of Health (<http://www.fnih.org>). The grantee organization is the Northern California Institute for Research and Education, and the study is coordinated by the Alzheimer's Disease Cooperative Study at the University of California, San Diego. ADNI data are disseminated by the Laboratory for Neuro Imaging at the University of California, Los Angeles. This research was also supported by NIH grants P30 AG010129 and K01 AG030514.

References

- [1] G. Aguirre, E. Zarahn, M. D'esposito, The variability of human, bold hemodynamic responses, *Neuroimage* 8 (4) (1998) 360–369.
- [2] G. Aneiros-Pérez, P. Vieu, Semi-functional partial linear regression, *Stat. Probab. Lett.* 76 (11) (2006) 1102–1110.
- [3] P.J. Basser, J. Mattiello, D. LeBihan, Estimation of the effective self-diffusion tensor from the NMR spin echo, *J. Magn. Reson.: Ser. B* 103 (3) (1994) 247–254.
- [4] P.J. Basser, J. Mattiello, D. LeBihan, MR diffusion tensor spectroscopy and imaging, *Biophys. J.* 66 (1) (1994) 259–267.
- [5] S. Boyd, L. Vandenberghe, *Convex Optimization*, Cambridge University Press, Cambridge, 2004.
- [6] T.T. Cai, P. Hall, Prediction in functional linear regression, *Ann. Stat.* 34 (5) (2006) 2159–2179.
- [7] T.T. Cai, M. Yuan, Minimax and adaptive prediction for functional linear regression, *J. Am. Stat. Assoc.* 107 (499) (2012) 1201–1216.
- [8] H. Cardot, C. Crambes, P. Sarda, Quantile regression when the covariates are functions, *Nonparametr. Stat.* 17 (7) (2005) 841–856.
- [9] H. Cardot, F. Ferraty, P. Sarda, Spline estimators for the functional linear model, *Stat. Sin.* 13 (3) (2003) 571–592.
- [10] C. Crambes, A. Kneip, P. Sarda, Smoothing splines estimators for functional linear regression, *Ann. Stat.* (2009) 35–72.
- [11] S. De Jong, SIMPLS: an alternative approach to partial least squares regression, *Chem. Intell. Lab. Syst.* 18 (3) (1993) 251–263.
- [12] A. Delaigle, P. Hall, Methodology and theory for partial least squares applied to functional data, *Ann. Stat.* 40 (1) (2012) 322–352.
- [13] Y. Dodge, J. Whittaker, Partial quantile regression, *Metrika* 70 (1) (2009) 35–57.
- [14] K. Domschke, U. Dannlowski, Imaging genetics of anxiety disorders, *Neuroimage* 53 (3) (2010) 822–831.
- [15] L. Fass, Imaging and cancer: a review, *Mol. Oncol.* 2 (2) (2008) 115–152.
- [16] K.J. Friston, Modalities, modes, and models in functional neuroimaging, *Science* 326 (5951) (2009) 399–403.
- [17] J. Goldsmith, J. Bobb, C.M. Crainiceanu, B. Caffo, D. Reich, Penalized functional regression, *J. Comput. Graph. Stat.* 20 (4) (2011) 830–851.
- [18] J. Goldsmith, C.M. Crainiceanu, B.S. Caffo, D.S. Reich, Penalized functional regression analysis of white-matter tract profiles in multiple sclerosis, *Neuroimage* 57 (2) (2011) 431–439.
- [19] P. Hall, J.L. Horowitz, Methodology and convergence rates for functional linear regression, *Ann. Stat.* 35 (1) (2007) 70–91.
- [20] T. Hastie, R. Tibshirani, J. Friedman, *The Elements of Statistical Learning*, vol. 2, Springer, New York, 2009.
- [21] S.A. Huettel, A.W. Song, G. McCarthy, *Functional Magnetic Resonance Imaging*, vol. 1, Sinauer Associates, Sunderland, 2004.
- [22] D.R. Hunter, K. Lange, Quantile regression via an mm algorithm, *J. Comput. Graph. Stat.* 9 (1) (2000) 60–77.
- [23] G.M. James, J. Wang, J. Zhu, Functional linear regression that's interpretable, *Ann. Stat.* (2009) 2083–2108.
- [24] K. Kato, Estimation in functional linear quantile regression, *Ann. Stat.* 40 (6) (2012) 3108–3136.
- [25] R. Koenker, *Quantile Regression*, Cambridge University Press, Cambridge, 2005.
- [26] R. Koenker, *quantreg: quantile regression*. R package version 5.05, 2013. URL (<http://www.CRAN.R-project.org/package=quantreg>).
- [27] E.R. Lee, B.U. Park, Sparse estimation in functional linear regression, *J. Multivar. Anal.* 105 (1) (2012) 1–17.
- [28] G. Li, Y. Li, C.-L. Tsai, Quantile correlations and quantile autoregressive modeling, *J. Am. Stat. Assoc.* 110 (509) (2015) 246–261.
- [29] H. Lian, Functional partial linear model, *J. Nonparametr. Stat.* 23 (1) (2011) 115–128.
- [30] M.A. Lindquist, The statistical analysis of fMRI data, *Stat. Sci.* 23 (4) (2008) 439–464.
- [31] M.A. Lindquist, J.M. Loh, L.Y. Atlas, T.D. Wager, Modeling the hemodynamic response function in fMRI: efficiency, bias and mis-modeling, *Neuroimage* 45 (1) (2009) S187–S198.
- [32] Y. Lu, J. Du, Z. Sun, Functional partially linear quantile regression model, *Metrika* 77 (2) (2014) 317–332.
- [33] E. Niedermeyer, F.L. Da Silva, *Electroencephalography: Basic Principles, Clinical Applications, and Related Fields*, Lippincott Williams & Wilkins, Philadelphia, 2005.
- [34] W.D. Penny, K.J. Friston, J.T. Ashburner, S.J. Kiebel, T.E. Nichols, *Statistical Parametric Mapping: The Analysis of Functional Brain Images: The Analysis of Functional Brain Images*, Academic Press, Cambridge, 2011.
- [35] P.T. Reiss, R.T. Ogden, Functional principal component regression and functional partial least squares, *J. Am. Stat. Assoc.* 102 (479) (2007) 984–996.
- [36] C. Scharinger, U. Rabl, H.H. Sitte, L. Pezawas, Imaging genetics of mood disorders, *Neuroimage* 53 (3) (2010) 810–821.
- [37] H. Shin, Partial functional linear regression, *J. Stat. Plan. Inference* 139 (10) (2009) 3405–3418.
- [38] S.M. Smith, M. Jenkinson, H. Johansen-Berg, D. Rueckert, T.E. Nichols, C. E. Mackay, K.E. Watkins, O. Ciccarelli, M.Z. Cader, P.M. Matthews, et al., Tract-based spatial statistics: voxelwise analysis of multi-subject diffusion data, *Neuroimage* 31 (4) (2006) 1487–1505.
- [39] Y. Sun, Semiparametric efficient estimation of partially linear quantile regression models, *Ann. Econ. Finance* 6 (1) (2005) 105.
- [40] Q. Tang, L. Cheng, Partial functional linear quantile regression, *Sci. China Math.* 57 (12) (2014) 2589–2608.
- [41] T.N. Tombaugh, N.J. McIntyre, The mini-mental state examination: a comprehensive review, *J. Am. Geriatr. Soc.* 40 (1992) 922–935.
- [42] N. Tzourio-Mazoyer, B. Landeau, D. Papathanassiou, F. Crivello, O. Etard, N. Delcroix, B. Mazoyer, M. Joliot, Automated anatomical labeling of activations in SPM using a macroscopic anatomical parcellation of the MNI MRI single-subject brain, *Neuroimage* 15 (1) (2002) 273–289.
- [43] M. Yuan, T.T. Cai, A reproducing kernel hilbert space approach to functional linear regression, *Ann. Stat.* 38 (6) (2010) 3412–3444.
- [44] Y. Zhao, H. Chen, R.T. Ogden, Wavelet-based weighted lasso and screening approaches in functional linear regression, *J. Comput. Graph. Stat.* 24 (3) (2015) 655–675.
- [45] Y. Zhao, R.T. Ogden, P.T. Reiss, Wavelet-based lasso in functional linear regression, *J. Comput. Graph. Stat.* 21 (3) (2012) 600–617.
- [46] H. Zhou, L. Li, Regularized matrix regression, *J. R. Stat. Soc.: Ser. B (Stat. Methodol.)* 76 (2) (2014) 463–483.
- [47] H. Zhou, L. Li, H. Zhu, Tensor regression with applications in neuroimaging data analysis, *J. Am. Stat. Assoc.* 108 (502) (2013) 540–552.
- [48] H. Zhu, L. Kong, R. Li, M. Styner, G. Gerig, W. Lin, J.H. Gilmore, Fdfts: functional analysis of diffusion tensor tract statistics, *NeuroImage* 56 (3) (2011) 1412–1425.
- [49] H. Zhu, R. Li, L. Kong, Multivariate varying coefficient model for functional responses, *Ann. Stat.* 40 (5) (2012) 2634–2666.
- [50] H. Zhu, H. Zhang, J.G. Ibrahim, B.S. Peterson, Statistical analysis of diffusion tensors in diffusion-weighted magnetic resonance imaging data, *J. Am. Stat. Assoc.* 102 (480) (2007) 1085–1102.
- [51] H. Zou, M. Yuan, Composite quantile regression and the oracle model selection theory, *Ann. Stat.* (2008) 1108–1126.



Dengdeng Yu is a PhD candidate at the department of Mathematical and Statistical Sciences of the University of Alberta. He received his BSc in information and computing science at the Southeast University in 2007. Mr. Dengdeng Yu obtained his MSc in finance at the University of Ulm in 2011 and MSc in statistics at the University of Alberta in 2013. His research interests include functional data analysis, neuroimaging data analysis and quantile regression.



analysis, robust statistics and statistical machine learning.

Linglong Kong is an assistant professor at the department of Mathematical and Statistical Sciences of the University of Alberta. He received his BSc in probability and statistics in 1999 at Beijing Normal University and his MSc in statistics at Peking University in 2002. Dr. Linglong Kong obtained his PhD in statistics at the University of Alberta in 2009. He then did one-year postdoctoral training at Michigan State University in 2010 and another two-year postdoctoral training at the University of North Carolina at Chapel Hill from 2010 to 2012; after that he joined the University of Alberta as an assistant professor. His research interests include high-dimensional data analysis, neuroimaging data



Ivan Mizera is a professor at the department of Mathematical and Statistical Sciences of the University of Alberta. He received his PhD at Charles University in 1993 and finished his habilitation at Comenius University in 2000. Dr. Ivan Mizera was a visiting assistant professor at the University of Illinois at Urbana-Champaign in 1997–1998 and a visiting associate professor at the University of California, Davis in 2005. He joined the university of Alberta as an associate professor in 2000 and became a full professor in 2005. His research interests include robust statistics, convex optimization, regularization, density estimation and empirical Bayes methodology.